

CASE STUDY

on

STREETMEKKA / GAM3
Copenhagen, Denmark

by

BBP Arkitekter AS

KTH
Stockholm, Sweden

-
2014

-
supervised by Jonas E Andersson,
arkitekt SAR/MSA, tekn doktor arkitektur för äldre
Arkitekturskolan, Skolan för Arkitektur och Samhällsbyggnad/ School of Architecture
Kungl Tekniska Högskolan, KTH/ Royal Institute for Technology

-
Universal Architecture in the designer's eye – accessibility, social inclusion, sustainability, usability And Universal design

-
By Johannes Loidl



fig 01, bacon.dk (http://bascon.dk/uploads/tx_bascon/backgrounds/StreetMekka_7.jpg)

Category D: Complex indoor centres for sports, leisure and recreation, Special Prize - StreetMekka, Copenhagen, Denmark
 Planende Institution: BBP Arkitekter AS (Architekt)



Category D: Complex indoor centres for sports, leisure and recreation

SPECIAL PRIZE

StreetMekka
 Copenhagen, Denmark



The vision behind StreetMekka is to make urban sports and street culture available to everyone in order to empower youth and prevent conflict and marginalisation on a local and global level. The programme for StreetMekka is a fusion of different street sports, dance and street culture and an effort to integrate minority youth into the community.

StreetMekka is part of the multicultural building compound, which shares the same courtyard. The design strategy was to save as much of the old industrial look as possible, making the place more "ghetto like". The walls are not painted, the railings are of raw iron, and the floor is made of asphalt, concrete or chipboard, which all in all makes the building less institutional, cheaper and more open for the users' own marks and paintings.

The front toward the public courtyard has been opened with big garage doors at the end of the main hall. The garage doors can be opened in the summer and when placed horizontally the gates create a covered zone outside that can function as an outdoor scene for music etc.

StreetMekka in Copenhagen was awarded a Special Prize by the jury "in appreciation of the successful transformation of an existing industrial building into a sports and street culture centre for young people. This project is of high social relevance in terms of empowering young people and preventing conflicts. It is a valuable example of the recuperation of out-of-use facilities for sport and for the adequateness of 19th century industrial facilities - a tram shed in this case - for all kinds of young urban activities."



2013 IBC/IAKS AWARD



Special Prize



Address
 StreetMekka
 Engelsevej 82D
 DK-2450 Copenhagen SV
 www.streetmekka.dk

Client/Operator
 GAM3
 Engelsevej 82D
 DK-2450 Copenhagen SV
 www.streetmekka.dk

Architect
 BBP Arkitekter AS
 Brogade 25, E.5 sal
 DK-1260 Copenhagen K
 www.bbpa.dk

Start of construction
 08/2009
Commissioning
 11/2010

Size of site
 4.000 m²
Activity/Competition area
 4.130 m²
Spectator facilities
 400

Construction costs
 1.500.000 €
Operating costs in 2012
 395.000 €

Number of athletes/users in 2012
 33.586
Number of spectators in 2012
 37.436

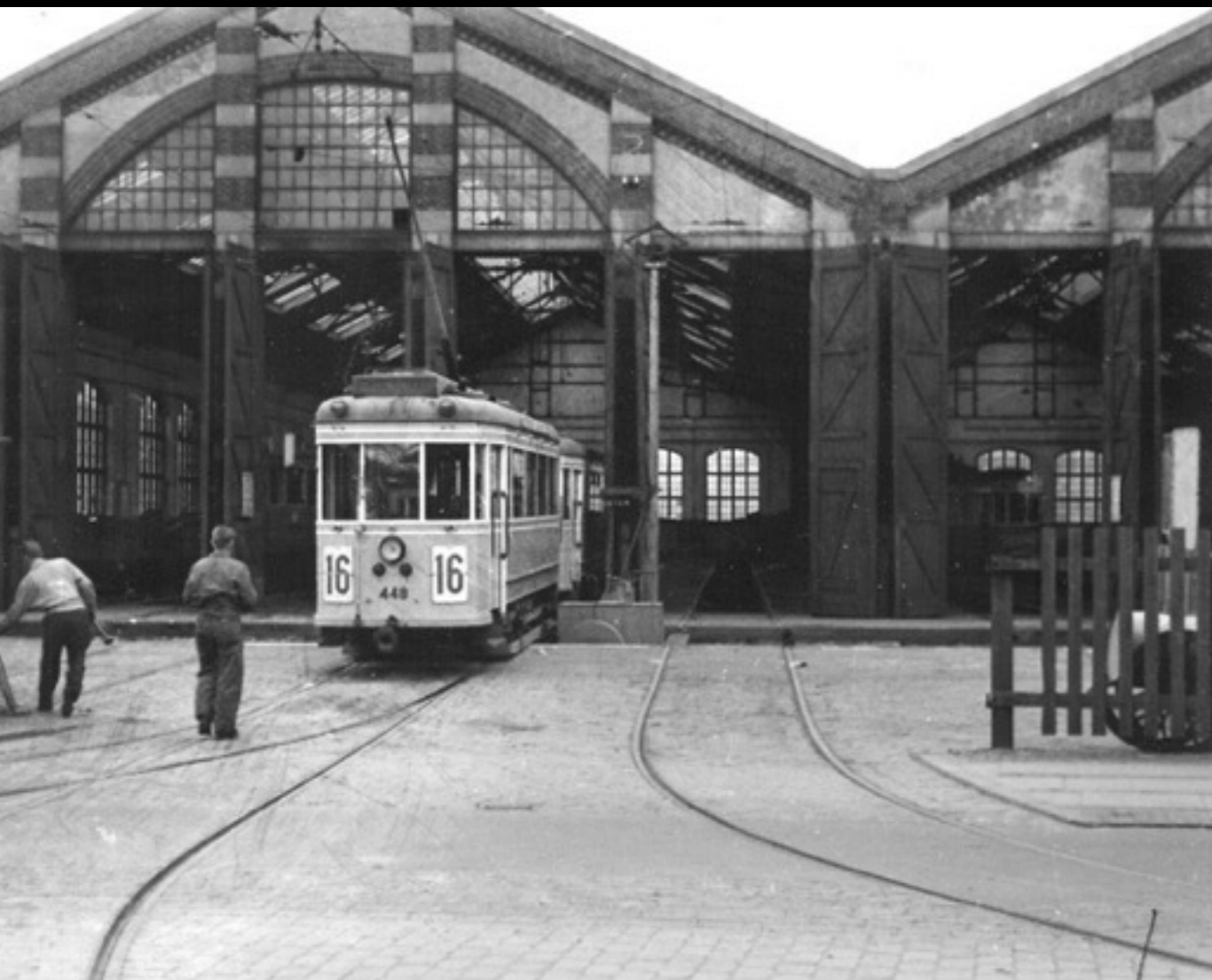


fig 03, Vognstyrer (<http://www.vognstyrer.dk/Sporvogne/KS/Linje%2016/Enghaveremise3.jpg>)



fig 04, Vognstyrer (<http://www.vognstyrer.dk/Sporvogne/KS/Turist/Foto5.jpg>)



fig 05, Google Maps (<https://www.google.se/maps/place/GAM3/@55.6688303,12.5792286,4844m/data=!3m1!1e3!4m2!3m1!1s0x465253832ed556b3:0x4bd461fd8c28ab2d>)



fig 06, Google Maps (<https://www.google.se/maps/place/GAM3/@55.6572231,12.540712,2423m/data=!3m1!1e3!4m2!3m1!1s0x465253832ed556b3:0x4bd461fd8c28ab2d>)



fig 07, Google Maps (<https://www.google.se/maps/place/GAM3/@55.6614869,12.5403043,303m/data=!3m1!1e3!4m2!3m1!1s0x465253832ed556b3:0x4bd461fd8c28ab2d>)



fig 08 - 11, Johannes Loidl

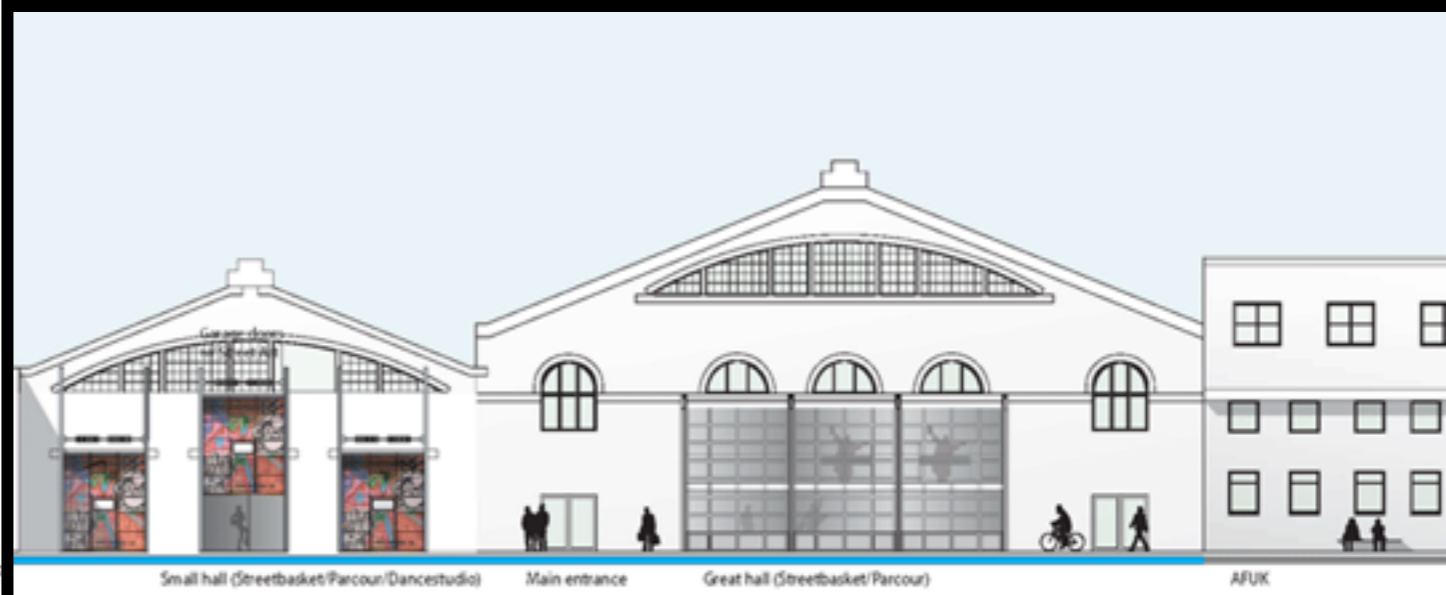
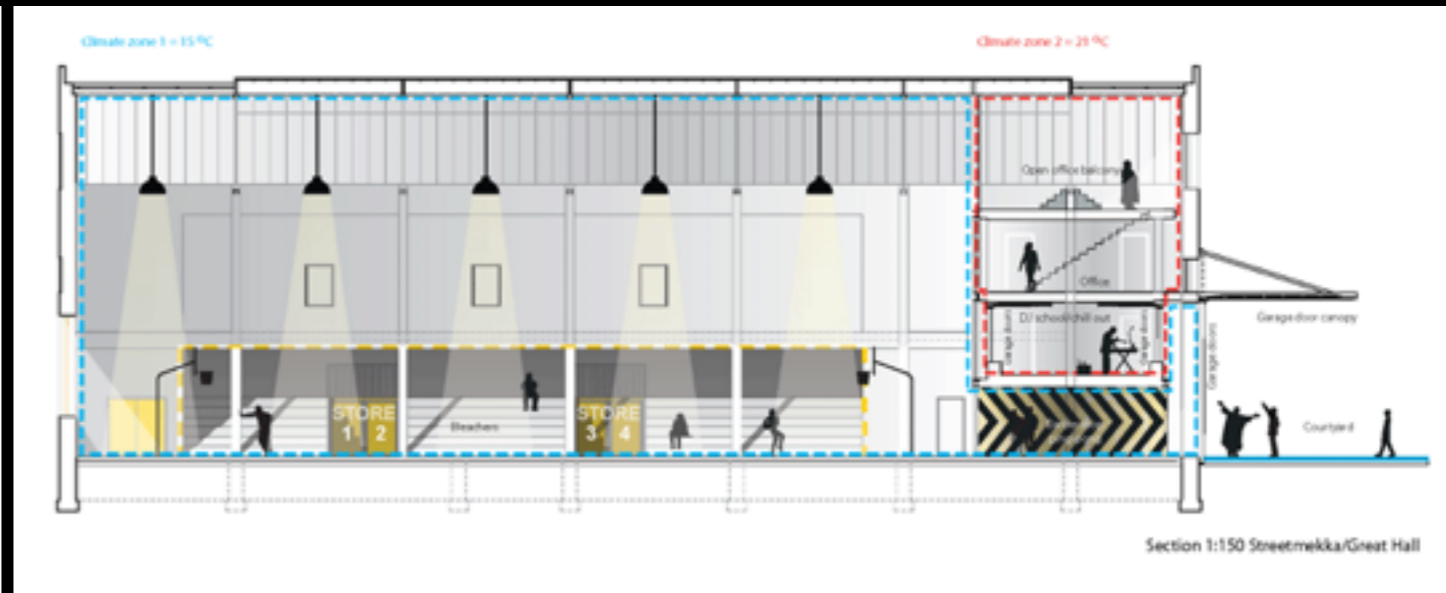


fig 13, 14, BBP Arkitekter AS (<http://www.bbp.dk/projekt/kultur/remiserne-enghavevej>)

fig 12, BBP Arkitekter AS (http://www.sportspace.eu/wp-content/uploads/2013/07/62_Streetmekka_04.jpg)



fig 15 -18, Johannes Loidl

Assessment:

The performative ability/functionality: 3

- The backyard offers a wide range of programs; for instance several schools, (such as a circus school, a cooking school and a dance school) and other spaces for sport activities (such as a skatepark, a parkour area and a basketball court), most probably targeted at teenagers with unique or alternative hobbies.
- The floor of the yard is colored in green and red, which is not intended to but could aid a visually impaired person navigate himself/herself around the area.
- The entrance is a bit hidden and not particularly signposted.

Visual capacity: 4

- The entrance is fairly small for a public building, which gives the impression of being in a private area instead of a public space.
- There is a certain sense of familiarity, for the reason that visitors would never end up there by coincidence, but rather because they know that this place exists.
- The buildings are refurbished, however, it is not completely polished so that the “dirt” and “roughness” of the building is still urbanely maintained.
- Graffiti on the walls adds up to the ghetto flair.

Assessment:

Acoustic capacity: 4

- The acoustics is similar to that of a schoolyard.

Locomotive capacity: 4

- Once inside the spacious courtyard invites visitors to stay and explore the possibilities. The narrow entrance, however, is less welcoming.

Thermal Capacity: 5

- It was relatively cold in the outdoor part of the court yard, because the visit was during November. Nonetheless it was not that cold for a bunch of children, which were playing and skating around the area even though it was officially closed on that day.
- Inside the building there are two climate zones: one for the sport areas (which are connected to the outdoor spaces) with the average temperature of 15°C; and for the rest of the indoor areas with the average temperature of 21°C.

Olfactory capacity: 2

- Due to the cooking school (mentioned earlier), the smell changes throughout the day.

Overall assessment: 4

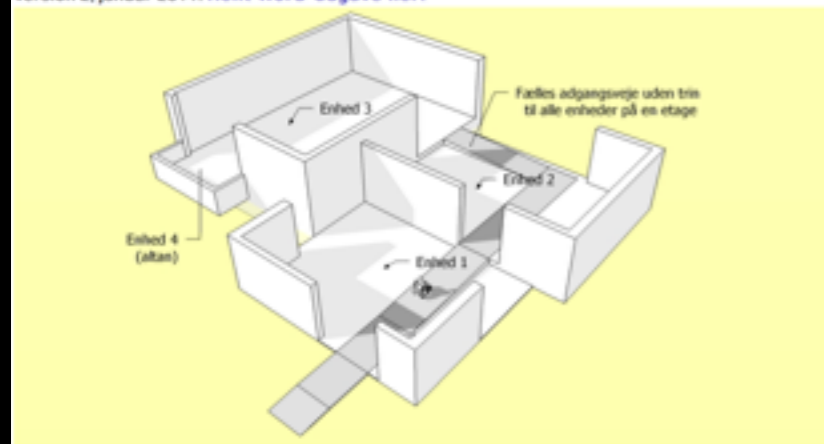
- The building is most likely one of the best examples for a lower budget, refurbished, industrial building, which succeeds in fulfilling every requirement of the Danish building code.

Niveaufri adgang og ramper i fælles adgangsveje

Tjekliste for niveaufri adgang og ramper i fælles adgangsveje

Tjekliste BR 10

Version 2, januar 2011. [Hent Word-udgave her.](#)



Husk i tidlig plantlægning:

- Samtlige enheder på en etage skal kunne nås uden trin, også altaner

Emne	Kilde	Type	Uddybning
Fælles adgangsveje skal have en tilstrækkelig bredde efter den planlagte brug og skal kunne passeres uhindret i deres fulde bredde.	BR 10 3.2.2. stk. 1	Krav	Fælles adgangsveje fører til to eller flere boliger, kontorer, mødelokaler eller andre enheder og omfatter vindfang, forrum, gange, altangange, svalagange, plads foran elevatorer, ramper og reposer såvel i som uden på bygningen, herunder udvendig adgangsareal til kælder. Efter arbejdsmiljølovgivningen skal gangbredder i visse erhvervsbyggerier også dimensioneres, så der kan benyttes særlige transportmidler som f.eks. trucks. De fleste fælles adgangsveje er tillige flugtveje og skal derfor også opfylde bestemmelserne i kap. 5 (brand) om flugtveje

Den fri bredde skal være mindst 1,3 m.	BR 10 3.2.2. stk. 1	Krav	
--	---------------------------	------	--

Fælles adgangsveje skal give niveaufri adgang til alle enheder på hver af bebyggelsens etager.	BR 10 3.2.2 stk. 2	Krav	Bestemmelsen omfatter niveaufri adgang til elevatorer, beboelses- og erhvervsenheder samt fællesarealer, herunder udendørs opholdsarealer på etagerne. I forbindelse med eventuelle niveauspring og højdeforskelle inden for offentligt tilgængelige enheder bør disse udlignes med ramper, lift eller lignende. Altaner betragtes som en selvstændig enhed. Fritaget for kravet er terrasser på bygningens tag, såfremt der ikke er adgang hertil med elevator.
--	--------------------------	------	--

Alle Änderungen und Höhenunterschiede Ebene muss durch Rampen gelöst werden.	BR 10 Absatz 3.2.2. 2	Bedarf	
--	-----------------------------	--------	--

fig 20 - 24, SBI Danish building code (<http://sbi.dk/tilgaengelighed/tjeklister/niveaufri-adgang-og-ramper-i-felles-adgangsveje>)

Bygningsreglementet skal følges ved ombygninger, der defineres som væsentlige



BR 10

Krav

Bygningsreglementets bestemmelser for rybyggeri skal som udgangspunkt også følges ved ombygninger.

Ordet "væsentlig" betyder i bygningsreglementets forstand, at ombygningen berører et emne med en tilgængelighedsbestemmelse. "Væsentlig" forstås ikke som omfang, pris eller størrelse.

Eksempel: Selv om der kun flyttes placering af et indgangsparti og sættes en bredere dør i, er der tale om en "væsentlig" ombygning i forhold til BR, fordi indgangsdøre har en tilgængelighedsbestemmelse hæftet på sig.

Det vil normalt betyde, at der skal tilføjes ramper og vandret areal udenfor indgangspartiet.

Hvis der er tale om vedligehold, hvor fx indgangsdørene udskiftes med tilsvarende nye døre med samme placering og dimensioner, regnes udskiftningen normalt ikke for en ombygning.

fig 25, SBI Danish building code (<http://sbi.dk/tilgaengelighed/tjeklister/ombygninger>)



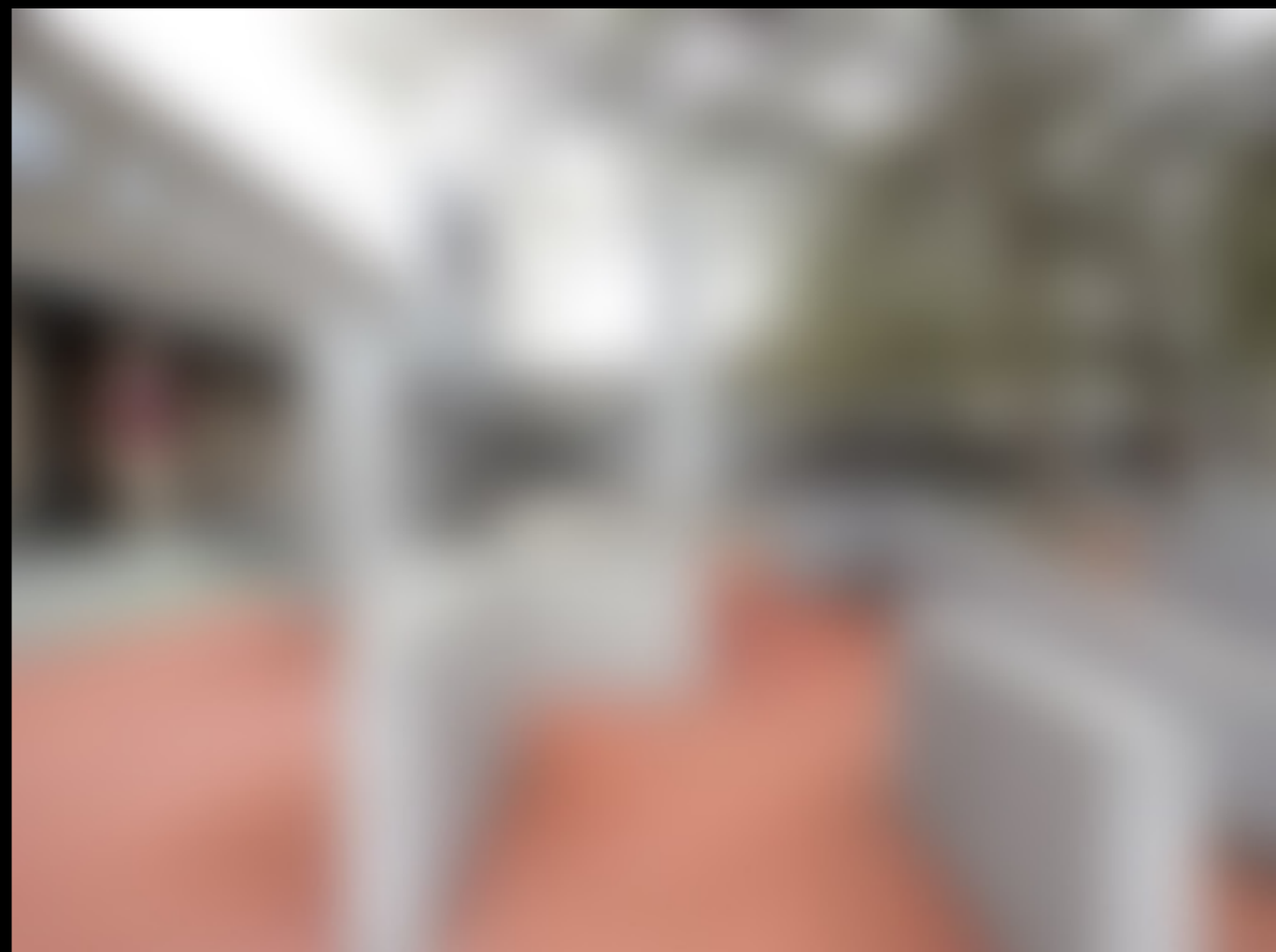




fig 30, GAM3 (http://gamedenmark.org/wp-content/uploads/2013/10/fridayjam_Streetmekka.jpg)

Sources

- fig. 01: [bacon.dk](http://bascon.dk/uploads/tx_bascon/backgrounds/StreetMekka_7.jpg) - http://bascon.dk/uploads/tx_bascon/backgrounds/StreetMekka_7.jpg
- fig. 02: sb International magazine for sports and leisure facilities - http://issuu.com/iaks/docs/sb_5_2013/38
- fig. 03: Vognstyrer - <http://www.vognstyrer.dk/Sporvogne/KS/Linje%2016/Enghaveremise3.jpg>
- fig. 04: Vognstyrer - <http://www.vognstyrer.dk/Sporvogne/KS/Turist/Foto5.jpg>
- fig. 05: Google - <https://www.google.se/maps/place/GAM3/@55.6688303,12.5792286,4844m/data=!3m1!1e3!4m2!3m1!1s0x465253832ed556b3:0x4bd461fd8c28ab2d>
- fig. 06: Google - <https://www.google.se/maps/place/GAM3/@55.6572231,12.540712,2423m/data=!3m1!1e3!4m2!3m1!1s0x465253832ed556b3:0x4bd461fd8c28ab2d>
- fig. 07: Google - <https://www.google.se/maps/place/GAM3/@55.6614869,12.5403043,303m/data=!3m1!1e3!4m2!3m1!1s0x465253832ed556b3:0x4bd461fd8c28ab2d>
- fig. 08 - 11: Johannes Loidl
- fig. 12: Floor plan - BBP Arkitekter AS - http://www.sportspace.eu/wp-content/uploads/2013/07/62_Streetmekka_04.jpg
- fig. 13, 14: BBP Arkitekter AS - <http://www.bbp.dk/projekt/kultur/remiserne-enghavevej>
- fig. 15 - 18: Johannes Loidl
- fig. 19: Assessment - Johannes Loidl
- fig. 20 - 24: Danish building code - <http://sbi.dk/tilgaengelighed/tjeklister/niveaufri-adgang-og-ramper-i-felles-adgangsveje>
- fig. 25: Danish building code - <http://sbi.dk/tilgaengelighed/tjeklister/ombygninger>
- fig. 26 - 29: Johannes Loidl
- fig. 30: GAM3 - http://gamedenmark.org/wp-content/uploads/2013/10/fridayjam_Streetmekka.jpg