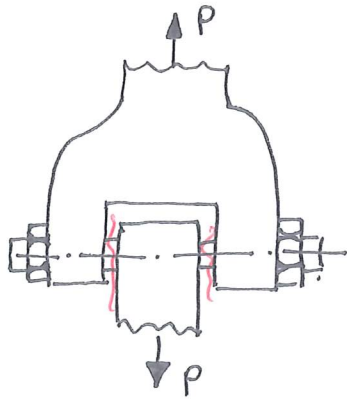


2.3.6

GIVET:

Bultdiameter $\varnothing 10 \text{ mm}$

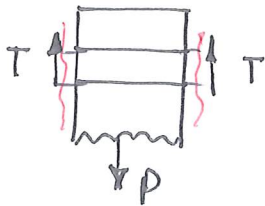
$$P = 1000 \text{ N}$$



SÖKT: Medelsjyvspänningen.

LÖSNING:

1.// Snitta:



$$\sum m v: \uparrow: 2T - P = 0$$

$$T = P/2$$

2.// Del. skjuvspn: $\tau_m A_{bult} = P/2$

$$\tau_m = \frac{P}{2 A_{bult}} = \frac{1000 \text{ N}}{2 \cdot \pi \left(\frac{10}{2}\right)^2 \text{ mm}^2} = 6,4 \text{ MPa}$$