

SMP Tool Beta v3.4 Quickstart Guide

November 28, 2022

SMP Tool (Semi-Markov Process Tool) is a Matlab application, currently in a beta version, for analyzing Semi-Markov Processes. This quickstart guide covers installation and analysis of a model using SMP Tool. There is also a manual for SMP Tool `SMP_Tool.....Manual_3.4.pdf` which mainly focuses on the older but still supported SMP and HSMP models. For questions and clarification, the reader is encouraged to send an email to `kaalen@kth.se`.

1 Installation

A prerequisite for installing SMP Tool is a working installation of Matlab 2021b with Simulink/Stateflow, Symbolic Math Toolbox, and Statistics and Machine Learning Toolbox. Note that SMP Tool has only been tested on Windows 10 64-Bit but may work on other platforms and other Matlab versions. To install SMP Tool as a Matlab app after it has been downloaded, extract `SMP_Tool_Beta_v3.4.zip` and run the MATLAB application installation file `SMP Tool Beta v3.4.mlappinstall` and press *Install* in the dialog that appears. After installation SMP Tool can be launched from the *APPS* tab in Matlab by finding it in the drop-down menu and pressing on it. When launched, the graphical user interface shown in figure 1 appears.

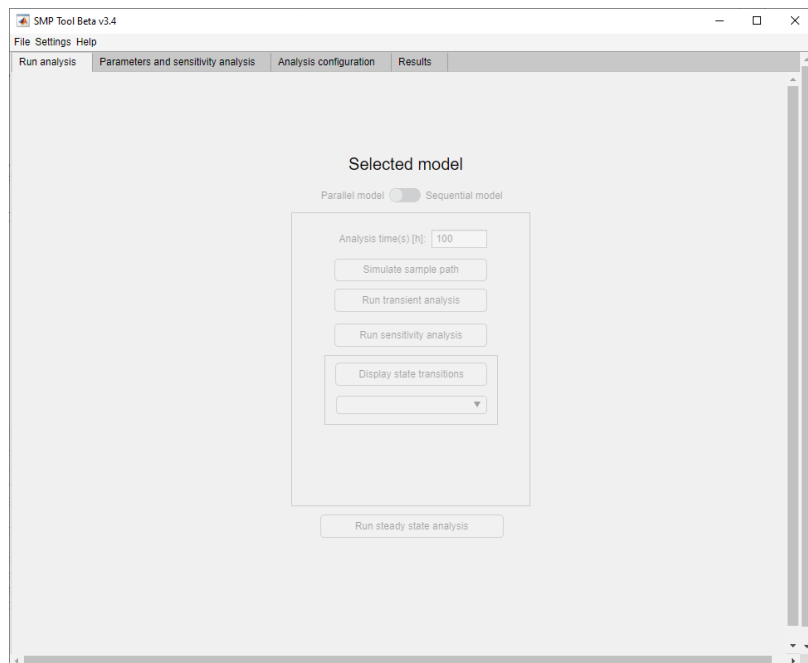


Figure 1: Graphical user interface for SMP Tool.

1.1 Open a Model

To load a model into SMP Tool, press the *File* button in the top left corner and hover over the button *Open* in the drop-down menu that appears, see figure 2. To open the existing model *Gear-*

box_wheel_lock found in *example_models* press *Existing model*, and select the model in the dialog that appears. The model is an SSF model which is an extension of a subset of Stateflow described in [1]. Most of the SSF syntax is exemplified by the *Gearbox_wheel_lock* model. The graphical user interface is updated as seen in figure 3 and a Stateflow window showing the model is opened.

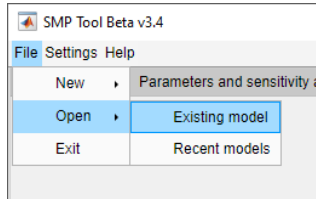


Figure 2: The file menu from SMP Tool.

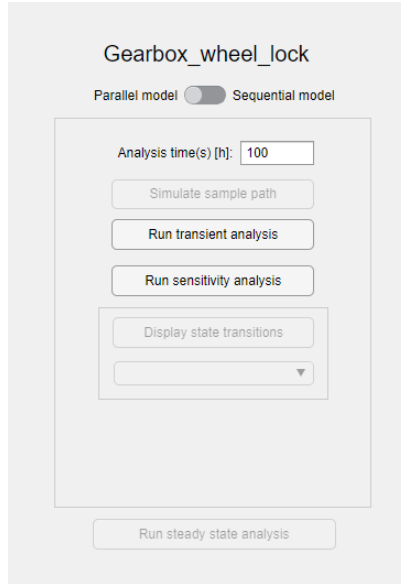


Figure 3: *Run analysis* tab from SMP Tool.

1.2 Analyze a Model

Under the *Run analysis* tab seen in figure 3 analyses are started. For the opened model *Gearbox_wheel_lock* transient analysis and sensitivity analysis are available. The analysis time is also specified here, which is the time of interest in hours for the analyses. Change the analysis time from 100 to 45000 hours.

Currently these analyses are done using Monte Carlo simulations which simulates the model a specified number of times. The specific number of times can be changed under the *Analysis configuration* tab in the field titled *No. simulations*, see figure 4. Change *No. simulations* from $1e+05$ to $1e+08$.

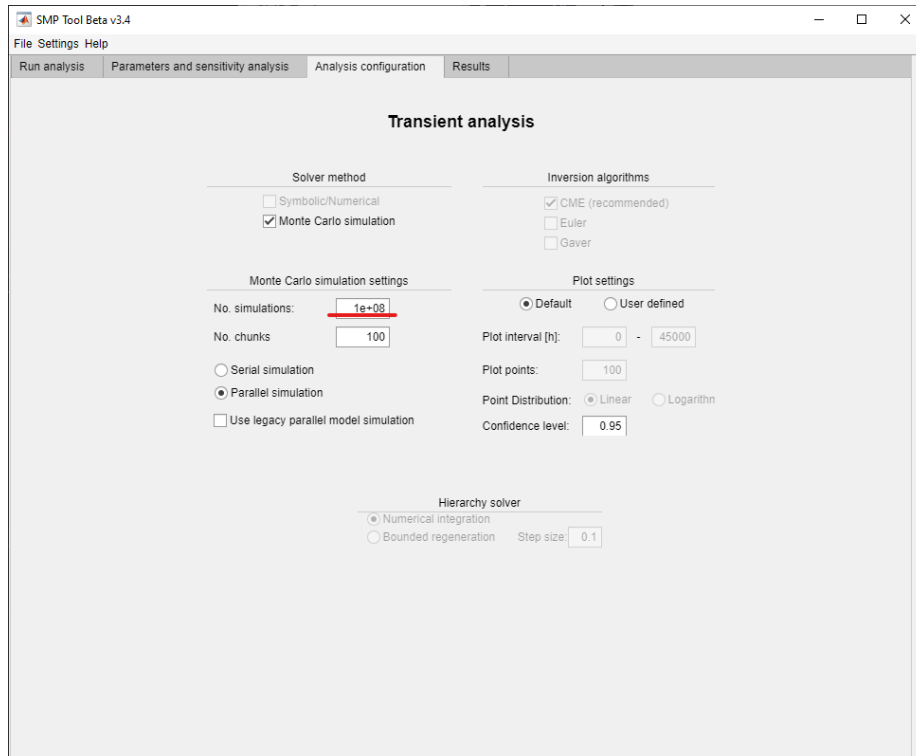


Figure 4: *Analysis configuration* tab from SMP Tool.

1.2.1 Transient analysis

Transient analysis calculates the reliability, availability and failure probability for the model. To find this for the opened model *Gearbox_wheel_lock* press *Run transient analysis* and wait for the analysis to complete. When completed, a tab showing the analysis results is opened under the *Results* tab, see figure 5. As seen in the figure the probability of failure during the analysis time is found to be around $4.6e-7$ with a certain confidence interval.

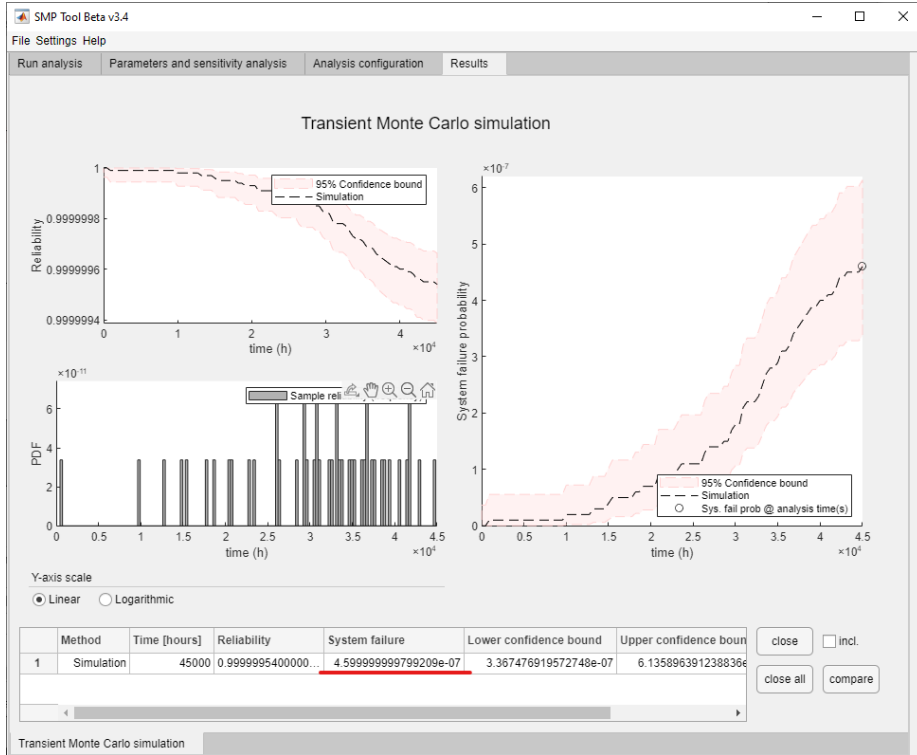


Figure 5: Result from a transient analysis of the *Gearbox_wheel_Lock* model. The number of simulations was $1e8$ and the analysis time was 45000 hours.

1.2.2 Sensitivity Analysis

Sensitivity analysis calculates failure probability for the model where each specified parameter is varied one at a time. A sensitivity analysis gives a clear view over which parameters affect the failure probability the most and the least.

The specific parameters and their ranges can be changed under the *Parameters and sensitivity analysis* tab, see figure 6. Select the parameters *restart_time* and *FR_SCG* and change their respective ranges to $[1.6 \ 16 \ 160]$ and $[1e-07 \ 1e-06 \ 1e-05]$.

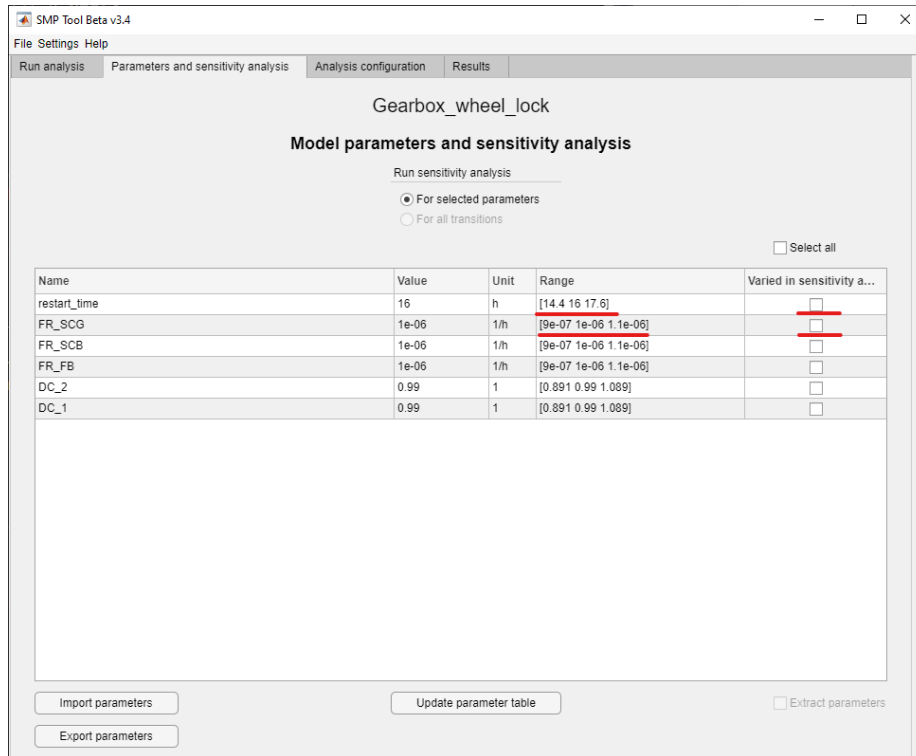


Figure 6: *Parameters and sensitivity analysis* tab from SMP Tool.

To perform a sensitivity analysis for the parameters *restart_time* and *FR_SCG* for the opened model *Gearbox_wheelLock* press *Run sensitivity analysis* and wait for the analysis to complete. When completed, a second tab showing the analysis results is opened under the *Results* tab, see figure 7. Note that the result is split into sub-tabs, one for each parameter. As seen in the figure the parameter *restart_time* doesn't affect the overall failure probability much when it is varied between the specified values while *FR_SCG* does.

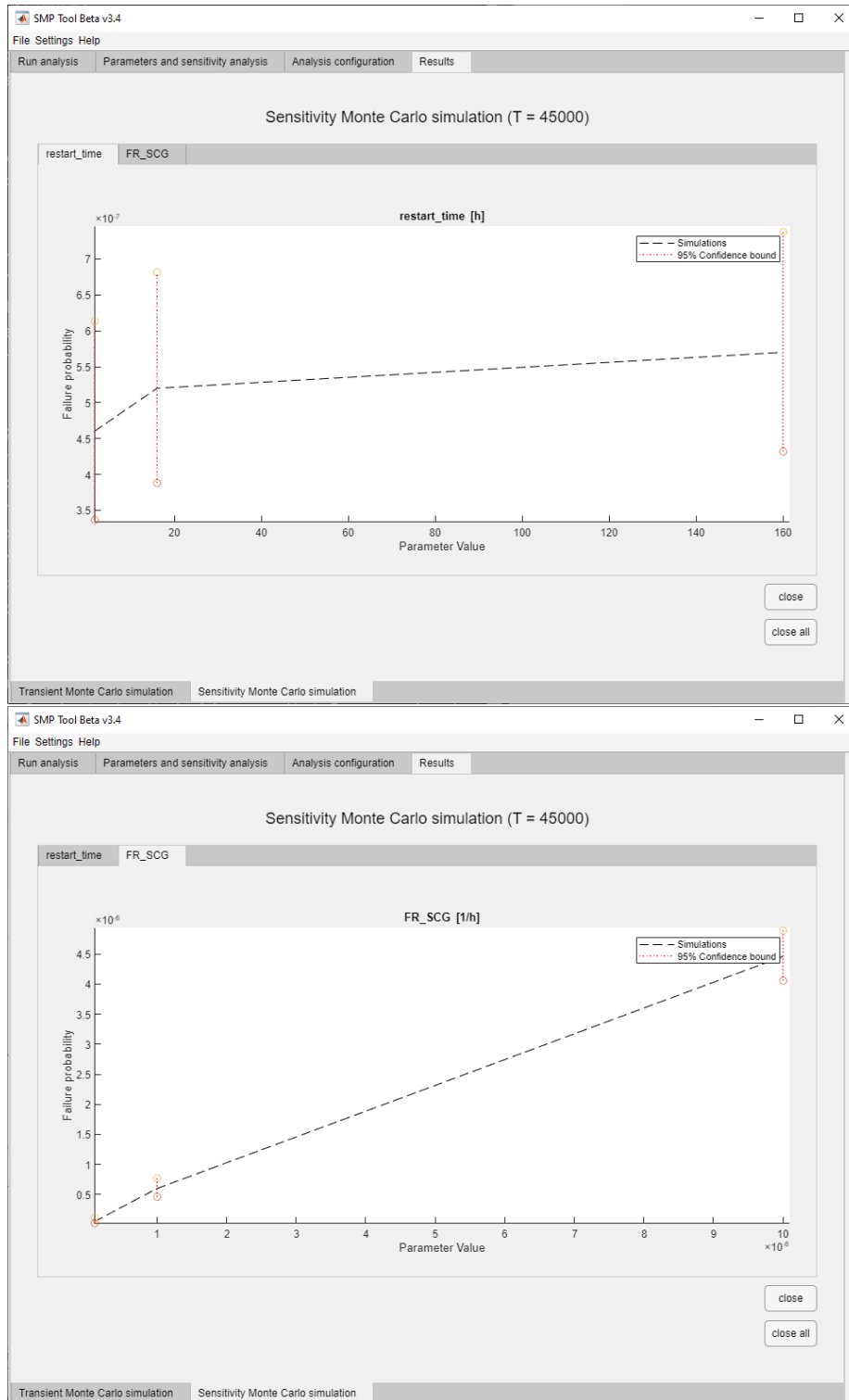


Figure 7: Result from a sensitivity analysis of the *Gearbox_wheel.lock* model. The number of simulations was $1e8$, the analysis time was 45000 hours and the parameters *restart_time* and *FR_SCG* were varied $\pm 90\%$.

References

- [1] Stefan Kaalen et al. “A Stochastic Extension of Stateflow”. In: *Proceedings of the 2022 ACM/SPEC on International Conference on Performance Engineering*. 2022, pp. 211–222.