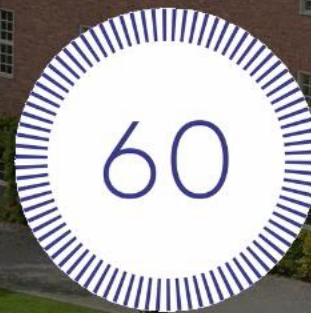




Welcome!

The webinar
starts in:





Engineering Sciences in Chemistry Biotechnology and Health at KTH

Today's hosts



Eva Malmström
Professor, Division of Coating Technology



Urooj
Master's student in Molecular Science and
Engineering and student ambassador

Agenda

- KTH
- Engineering Sciences in Chemistry, Biotechnology and Health
 - Education and master's programmes
 - Sustainability focus
 - Connection to industry
 - Research
- Career after KTH




Ask current students your questions using the Q&A



KTH is ranked 78 in the
QS World University
Rankings 2026

13,000+ students
2,000 PhD
840 teaching staff
310 professors

 Campus Albanova



3 reasons why KTH



Master's degrees of the
highest international standard

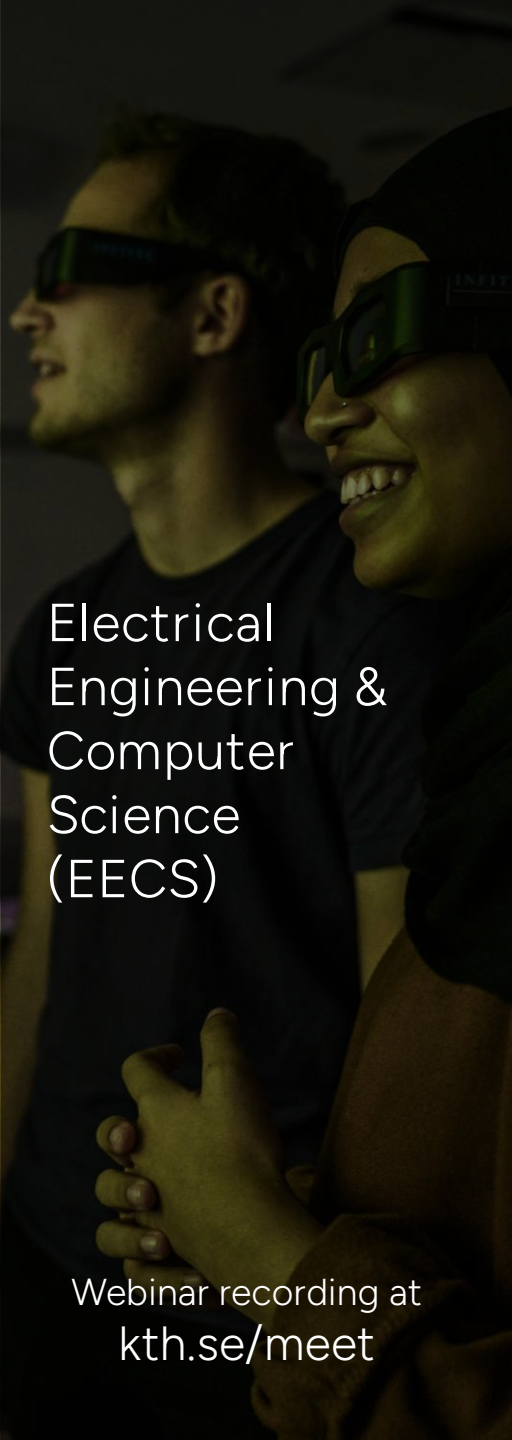


Close connection
with the industry



Innovative thinking and an
entrepreneurial mindset





Electrical
Engineering &
Computer
Science
(EECS)

Webinar recording at
kth.se/meet



Architecture &
the Built
Environment
(ABE)

Webinar recording at
kth.se/meet



Engineering
Sciences
(SCI)

Webinar recording at
kth.se/meet



Engineering
Sciences in
Chemistry,
Biotechnology
& Health
(CBH)



Industrial
Engineering &
Management
(ITM)

Webinar:
19 November
10:00 CET

Engineering Sciences in Chemistry, Biotechnology and Health

Responsible for research and
education in the subjects of:

- Health
- Materials
- Energy
- Environment

QS World University Rankings
by Subject 2025
Materials Science: 29
Chemical Engineering: 60
Chemistry: 80



KTH Campus



AlbaNova



Solna



Flemingsberg





KTH Flemingsberg

This is an aerial photograph of the KTH campus in Stockholm, Sweden. The image shows a dense urban area with numerous buildings, mostly with red-tiled roofs. A large green area, the Royal National Park, is visible on the right side. A winding river or canal runs through the upper part of the image. Several blue callout boxes with white text are overlaid on the image, pointing to specific locations. The labels include: KTH Flemingsberg (top left), KTH Solna (top center), Royal national park (top right), AlbaNova (middle right), Sports centre (middle right, below AlbaNova), Student union (center), Library (center-right), KTH Entré (center-bottom), Courtyard (bottom center), and Public transport (bottom left). The overall scene is a mix of urban development and green spaces.

KTH Solna

Royal national park

AlbaNova

Sports centre

Student union

Library

Public transport

KTH Entré

Courtyard

Master's programmes

- Chemical Engineering for Energy and the Environment
- Data-driven Health
- Industrial and Environmental Biotechnology
- Macromolecular Materials
- Medical Biotechnology
- Medical Engineering
- MSc Molecular Biotechnology and Bioinformatics – new!
- Molecular Science and Engineering
- Molecular Techniques in Life Science (Joint)
- Sports Technology
- Technology, Work and Health



Chemistry

Chemical Engineering for Energy and Environment

Delivers extensive knowledge in the diverse field of Chemical Engineering with a focus on sustainability.

Macromolecular Materials

Provides the skillset to lead the development of future sustainable fibre and polymer-based materials.

Molecular Science and Engineering

Emphasis is placed on the design, synthesis, characterization and applications of molecules and materials.





Biotechnology

Medical Biotechnology

Offers two tracks designed to provide specialisation within a specific field of biotechnology.

Industrial and Environmental Biotechnology

Offers three tracks to provide specialisation within a particular industrial biotechnology field.

Molecular Biotechnology and Bioinformatics – [new!](#)

Analyse complex biological data to tackle global challenges in medicine, food production, and sustainability.

Molecular Techniques in Life Science (Joint)

Gives a solid education in molecular biology, biotechnology, and medicine.



Health

Technology, Work and Health

How to plan, design and analyse work environments from a sustainability and performance perspective.

Data-driven Health

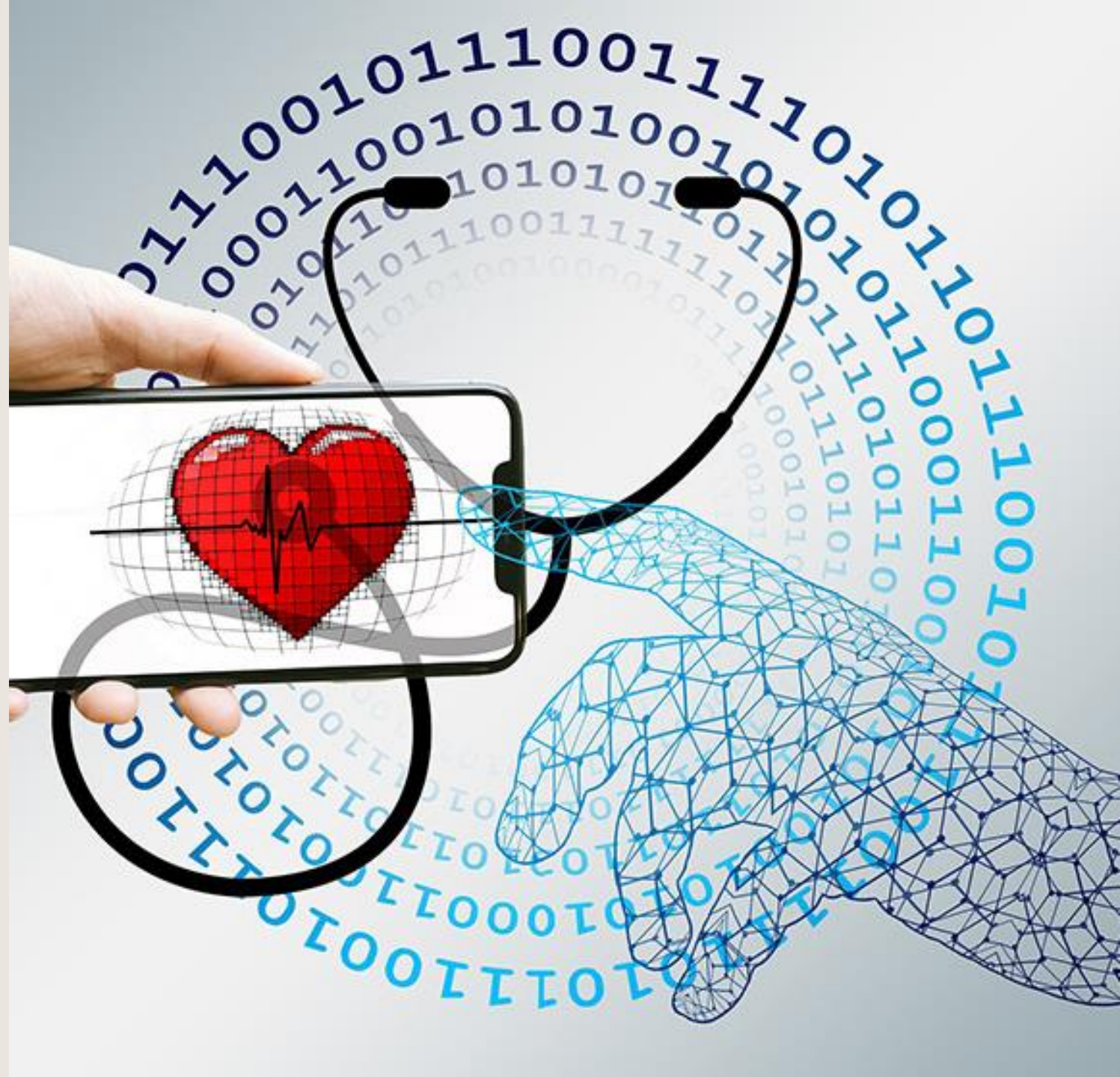
Equips you with the skills to employ data to transform healthcare and improve people's health and health systems.

Sports Technology

An interdisciplinary collaboration between KTH and the Swedish School of Sport and Health Sciences (GIH)

Medical Engineering

Choose a specialisation in Computer Science, Electronics or Physics, and further specialise in Biomechanics, Health Systems or Imaging





MSc Technology, Work and Health
18 November, 16:00 CET

MSc Molecular Biotechnology and Bioinformatics
21 November, 13:00 CET

MSc Industrial and Environmental Biotechnology
24 November, 15:00 CET

MSc Molecular Science and Engineering
25 November, 13:00 CET

MSc Molecular Techniques in Life Science
25 November, 14:00 CET

MSc Medical Biotechnology
26 November, 13:00 CET

MSc Macromolecular Materials
2 December, 13:00 CET

Programme specific webinars



Register at the programme
page or www.kth.se/meet

How to apply

1. Choose your programmes at kth.se/master
2. Check the admission requirements
3. Apply at universityadmissions.se
15 January
4. Submit documents
2 February
5. Pay the application fee (if required)
2 February
6. Check the admission results
26 March



Webinar: Application Walkthrough
4 December, 14:00 CET



Admission requirements

- General requirements
 - Bachelor's degree equivalent to a Swedish bachelor's degree
 - English proficiency (TOEFL iBT 90 or IELTS Academic 6.5)
- Country specific requirements
- Programme specific requirements



All information about requirements can be found at kth.se/master

Application documents

Certificates and diplomas of your completed degree(s)

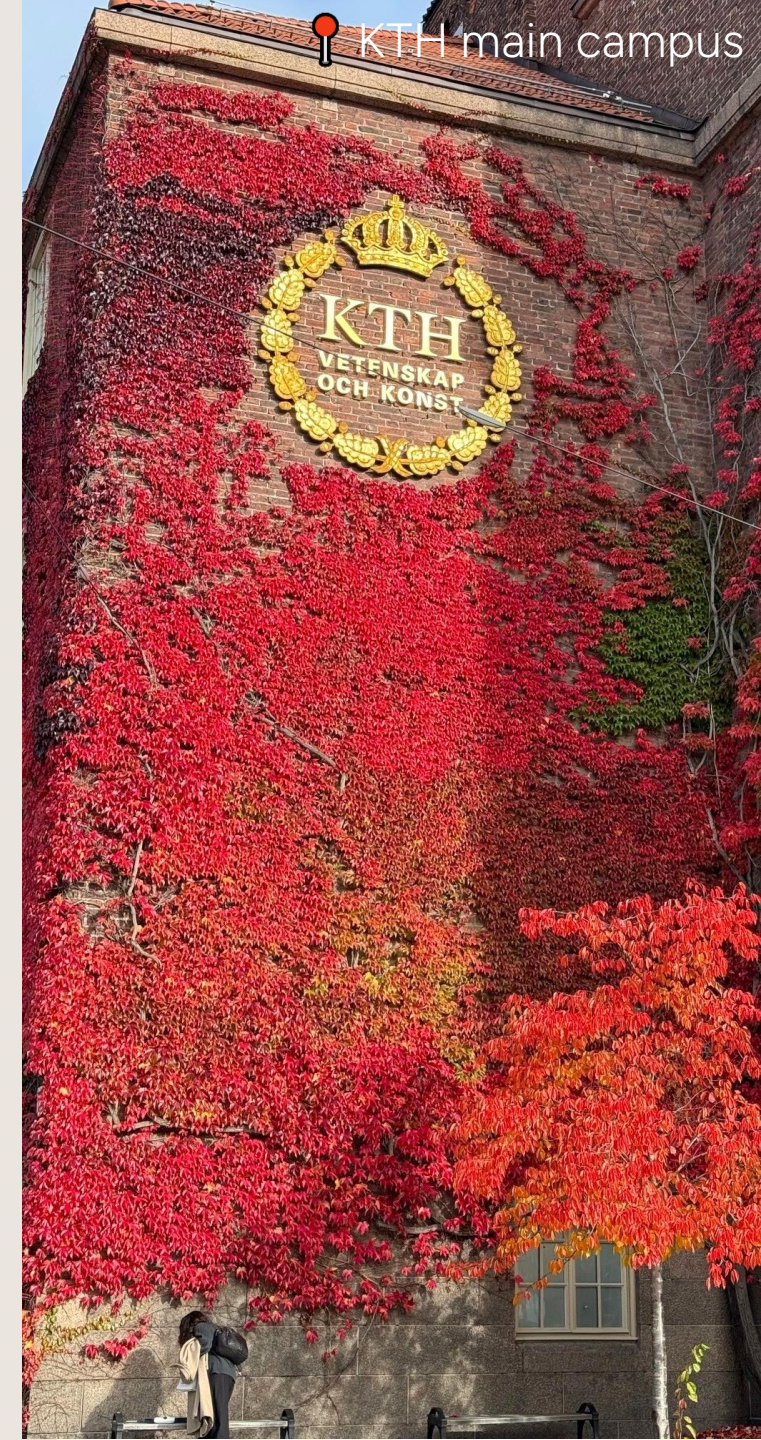
Transcript of completed courses and grades

Proof of English proficiency

Identification (for example a copy of your passport)

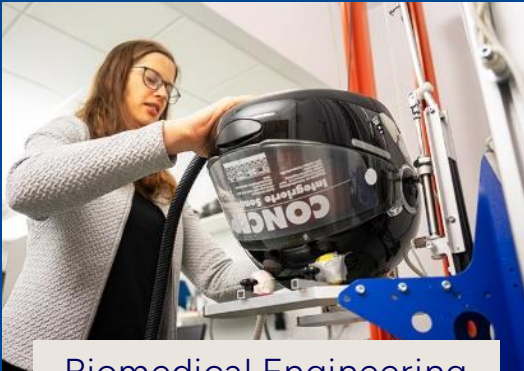
Programme-specific documents, for example:

- CV
- Letter of motivation
- Letters of recommendation
- Summary sheet





Research departments



Biomedical Engineering
and Health Systems



Chemistry



Chemical Engineering



Fiber and
Polymer Technology



Gene Technology



Industrial Biotechnology



Protein Science

Research environments



Career after KTH



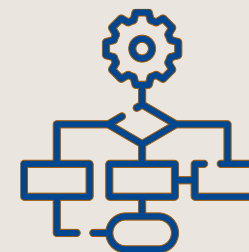
50 % get a job offer
before graduating



12 % of KTH graduates go
on to start their own
company



20 % get their first job
through the degree
project



1,000 degree project
proposals from companies

KTH start-ups and innovations



**BRIGHT
MATERIA**



AdBIOPRO

antibodypedia



Campus Flemingsberg



Upcoming in-person and digital events

- Webinars
 - Programme-specific
 - Application Walkthrough
- Regional events around the world



Register at www.kth.se/meet





Melita from
Mozambique/India
Chemical Engineering

[Connect with Melita](#)



Gonçalo from Portugal
Data-driven Health

[Connect with Gonçalo](#)



Eloïse from Belgium
Industrial and Environmental
Biotechnology

[Connect with Eloïse](#)



**Alex from South
Korea/Sweden**
Innovative Technology for
Healthy Living

[Connect with Alex](#)



Soham from India
Macromolecular Materials

[Connect with Soham](#)



Samuele from Italy
Medical
Biotechnology/Molecular
Biotechnology and
Bioinformatics

[Connect with Samuele](#)



Marius from Canada/France
Medical Engineering

[Connect with Marius](#)



Urooj from the UAE
Molecular Science and
Engineering

[Connect with Urooj](#)



Mauricio from Mexico
Molecular Techniques in Life
Science

[Connect with Mauricio](#)



Candela from Spain
Sports Technology

[Connect with Candela](#)



Soutia from Iran
Technology, Work and
Health

[Connect with Soutia](#)

At www.kth.se/ask you can ask questions to current KTH students within Engineering Sciences in Chemistry, Biotechnology and Health



 KTH main campus



Follow us on
social media!



Thank you for joining this webinar!

The Q&A will remain open until all the questions that
you have sent in are answered.

Visit www.kth.se/master for more information.