

Competitive Edge  
in Architecture  
Bill Hillier, Bjärke Ingels  
m.fl. om framtidens  
arkitektur. Seminarium  
på Kulturhuset Stockholm  
8 Juni 13-18

# Stockholm and Architecture Competitions

guided tour, 9th June 2009  
Magnus Rönn, Ass professor, Jonas E Andersson, PhD Candidate  
School of Architecture, Stockholm

## STOCKHOLM AND ARCHITECTURE ARCHITECTURAL COMPETITIONS

Departing from the campus area of the Royal Institute of Technology, the tour uses the architecture architectural competition as an instrument to zig-zag through the built environment in the inner city of Stockholm. During approximately 1.5 hour, the urban qualities of Stockholm and its architectural high-lights are investigated. The tour ends at the Kornhamnstorg, and will especially be accompanied by encounters with architecture resulting from a architectural competition. A short guide in English (map and short information) will be handed out.

Transportation: Walking from KTH

### Programme.

1. Royal Institute of Technology, KTH, Valhallavägen – architectural competition 1911-12,
2. New building for School of Architecture, (not yet built) architectural competition 2008
3. Engelbrekt's School, Engelbrektsskolan architectural competition 1897-98
4. Engelbrekt's Church, Engelbrektskyrkan, architectural competition 1906 via nearby quarters, Lärkstaden, Arkitekturskolan and Danderydsgatan
5. Carpenter's Order, Ordenstrappan, Timmermansorden, architectural competition 1915 via nearby quarters, Eriksbergsgatan.
6. Royal Library, Humlegården
7. Square Stureplan, urban-design architectural competition in 1989
8. Finnish Cultural Institute, architectural competition in 1995
9. John's Church, architectural competition 1782-83, and in 1881
10. Square Tegnérslunden, Swedish authors.
11. Kv Spelbomsplan 9 and 12, the Doctors' building, urban-design, 2006
12. Square Odenplan, urban-design, 2006
13. Stockholm City Library, architectural competition 2007
14. Stockholm Concert Hall, architectural competition 1920
15. Filmstaden, architectural competition in 198x
16. The Clarion Sign Hotel, 2007
17. The Bonnier's skyscraper, architectural competition 1937/ the Bonnier Art centre, 2006
18. view to St Erik quarters, architectural competition 1991
19. The World Trade Centre, architectural competition 1980t
20. The Hotel Continental, The Crystal, on-going architectural competition 2009,
21. Clara's Church, surrounding quarters, architectural competition in 196x
22. The Stockholm Cultural Centre, Kulturhuset/ Riksbanken, architectural competition 1965-66
23. The Royal Opera House, architectural competition, 1887
24. The Swedish Parliament, Riksdagen architectural competition 1904-1906,
25. The Tessin Palace, via the Royal Castle, The Oxenstierna Palace, The Stock Exchange, St Nicolas' Church Storkyrkan,
26. Tyska Kyrkan, spiran, architectural competition in 188x
27. Riddarholmen Church, and historical buildings
28. Birger Jarls Torn
29. View to Stockholm City Hall, architectural competition 1902-04
30. Square Kornhamnstorg view to Slussen, commission 1928, architectural competitions in 1992, 2004, 2008

## 1. Royal Institute of Technology, KTH, Valhallavägen – architectural competition 1911-12,

Architect 1914-1940 Erik Lallerstedt (buildings facing Valhallavägen)

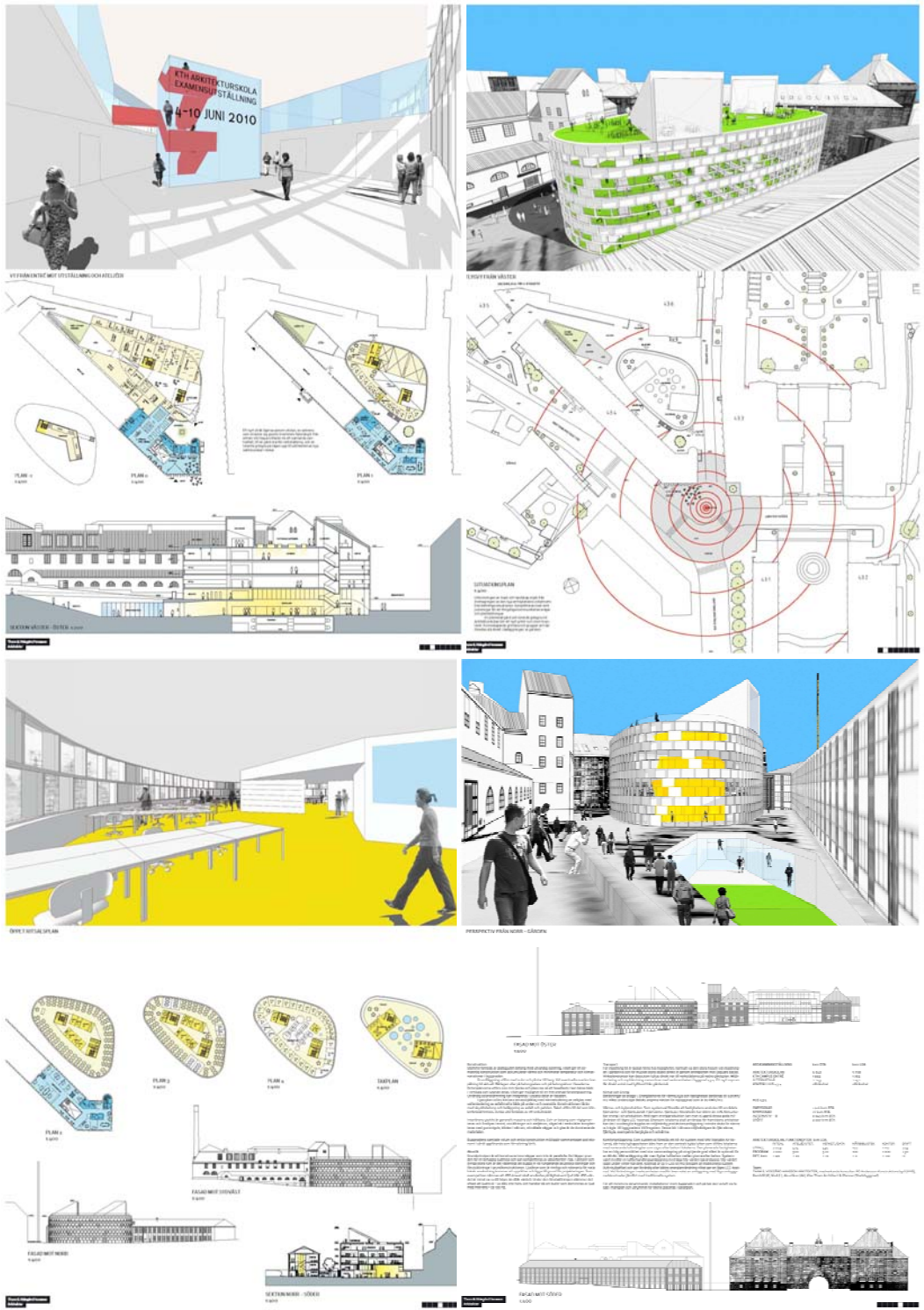
Architect 1945-1960, Nils Arbohm (extension behind original building)

Architect 1960-1970, Göran Henriksson, (further extensions)

## 2. New building for School of Architecture, (not yet built) architectural competition as parallel commissions 2007

Tham&Videgård Hansson Arkitekter, Stockholm Sweden/ Denmark (winner)





Other invited architects:

TEAM POM: Petrn Merom Arkitekter, Stockholm, Scheiwiller Svensson Arkitektkontor, Stockholm, Versa Honkonen Architects, Helsingfors, Sweden/Finland.

Wingårdh arkitektkontor, Göteborg & Stockholm, Sweden

Kazuyo Sejima + Ryue Nishizawa/ SANAA architects, Tokyo, Japan.

For further information, see link: <http://www.arkitekt.se/s30471>

### **3. Engelbrekt's School, Engelbrektsskolan architectural competition 1897-98**

Winning architect: Konrad Elméus in 1898, but he would not complete the building for unknown reasons. Instead, Ernst Haegglund executed the actual building for 2 400 pupils in a touch of Viking romanticism. The building has also been called the castle by its pupils and staff.

Ongoing discussions to build new housing on the fringes of the schoolyard, which dwellers in neighbouring houses protest against.

### **4 Engelbrekt's Church, Engelbrektskyrkan, architectural competition 1905-06**

Winning architect: Lars Israel Wahlman creating an astonishment among both architects and non-architects by its impressive architecture and innovative way of combining brick and granite.

### **via nearby quarters, Lärkstaden, Arkitekturskolan and Danderydsgatan**

Lärkstaden – townplan executed in 1907-1908, modelled after the English garden city. Mainly, single-family residences, but nowadays often embassies or company offices.

Arkitekturskolan, School of Architecture, 1966-69, architect Göran Henriksson. At the former site of a prison for women, a new school in brutalistic style was erected.

Danderydsgatan town plan 1920 – secluded residential street with three-storey single-family houses with small fore-courts.

### **5 Carpenter's Order, Ordenstrappan, Timmermansorden, architectural competition 1915.**

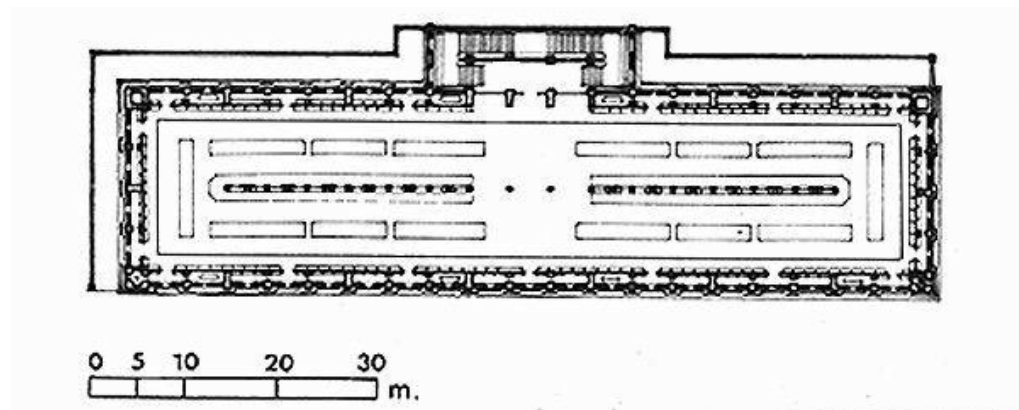
Architect Isak Gustaf Clason. An architectural competition was organized by the order in 1911-12 and 26 entries was submitted and evaluated by a jury. Isak Gustaf Clason was part of the jury along with another architect, Albert Lilienberg, later town planning director in Stockholm, both member of the order. A first prize was designated to GA Nilsson, but judged not worthy as the order's house. Instead IG Clason presented his own proposal for the building to the next board meeting. This proposal was to be executed.

## via nearby quarters, Eriksbergsgatan

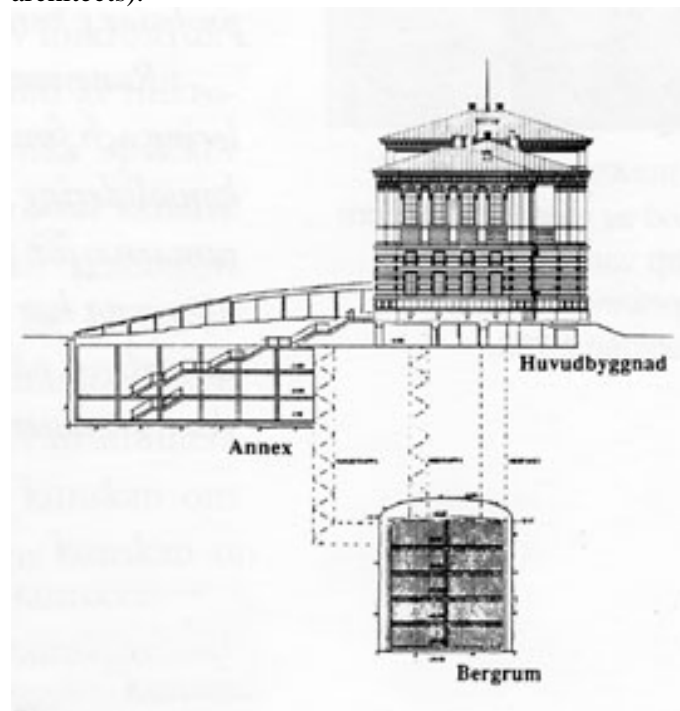
Former land owned by the Carpenter's Order, which were sold off to finance the building of the Order's house. Different town plans developed in 1908, 1917 and 1919. The quarters were developed during 1910-1930 stretching from Swedish Art Nouveau to Functionalism.

## 6. Royal Library, Humlegården.

The library building was designed in 1865-78 by architect FGA Dahl, and extended in 1926-1927 by A Anderberg. In 1999



Inspired by Henri Labrouste famous library St Geneviève nearby the Luxembourg Garden in Paris, see floor plan above. Extended in 1992-97 by adding new spaces in the underground in the back of the building towards Humlegården (possibly parallel commissions/ or invited architectural competition not yet identified, nor winning architects).



Humlegården, is a former royal garden for hock plantations, which were laid out by Gustavus Adolphus in the mid 17<sup>th</sup> century.

### **7 .Square Stureplan, urban-design architectural competition in 1989**

Open architectural competition in 1989, refurbishment of square, earlier a meeting-point for tramways and a stop underneath the so-called mushroom, Svampen in Swedish.

Winner: Jost Assman, Björn Bränngård och Torsten Fridh. First prize 100 000 SEK, 2nd prize 50 000 SEK, 3<sup>rd</sup> prize 35 000 SEK, 2 purchases, 2 honourable mentions.

### **8. Finnish Cultural Institute, architectural competition in 1995**

Open architectural competition, concerning a refurbishment of an existing building owned by the Finnish Cultural Institute.

Winners: GWSK Arkitekter AB, Stockholm, Sweden. First prize 80 000 SEK, 2<sup>nd</sup> prize 55 000 SEK, 1 purchase, 2 honourable mentions.

### **9. John's Church, architectural competition 1782-83, and in 1881**

Open architectural competition in 1782-83 proposed by Swedish king Gustav III, the oldest and first Swedish architectural competition.

Open architectural competition in 1881. The church was consecrated in 1890.

### **10. Square Tegnérunden, Swedish Authors**

Swedish author August Strindberg lived nearby in the blue tower, Blå tornet, designed by influential architects's office of Hagström and Ekman in 1906-07. There is a statue of him in the park, much more athletic than Strindberg was.

Also, a statue of Astrid Lindgren, who also lived nearby at Dalagatan.

An infill-project from 2007 by Strategisk Arkitektur AB.

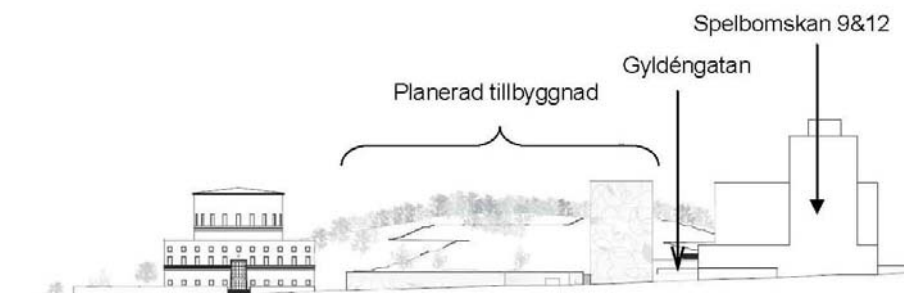
**11. Kv Spelbomskan 9 and 12, the Doctors' building, urban-design, 2006, parallel commissions**



*Fig. Perspektiv från väster mot Spelbomskan och Läkarhuset. (2007 Urban)*



*Fig. Perspektiv från öster med nuvarande och framtida stadsbibliotek i förgrunden. Folksam/Diligentia/BIG Arkitekter.*



*Fig. Snitt längs Odengatan. Från vänster: stadsbibliotekets befintliga huvudbyggnad, planerad tillbyggnad samt befintlig bebyggelse inom Spelbomskan 9 & 12 (Läkarhuset mm).*



## 12. Square Odenplan, urban-design, 2006, parallel commissions

The challenges:

Railway station north-south bound trains = Citybanan med station

The extension of Stockholm City Library = Tillbyggnad till Stadsbiblioteket

The refurbishment of the Doctors' building = Ombyggnaden av läkarhuset m

The subterranean extension of a shopping = Underjordisk handelsetablering

The extension of the metro to Karolinska = Tunnelbana till Karolinska Sjukhuset

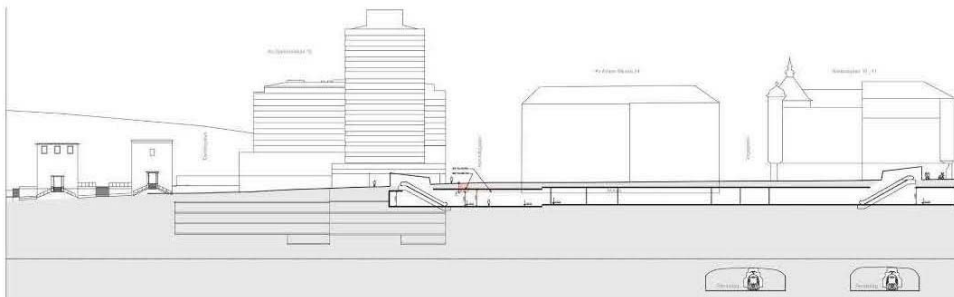


Fig. Sektion längs Odengatan med planerad handelsetablering under torget.

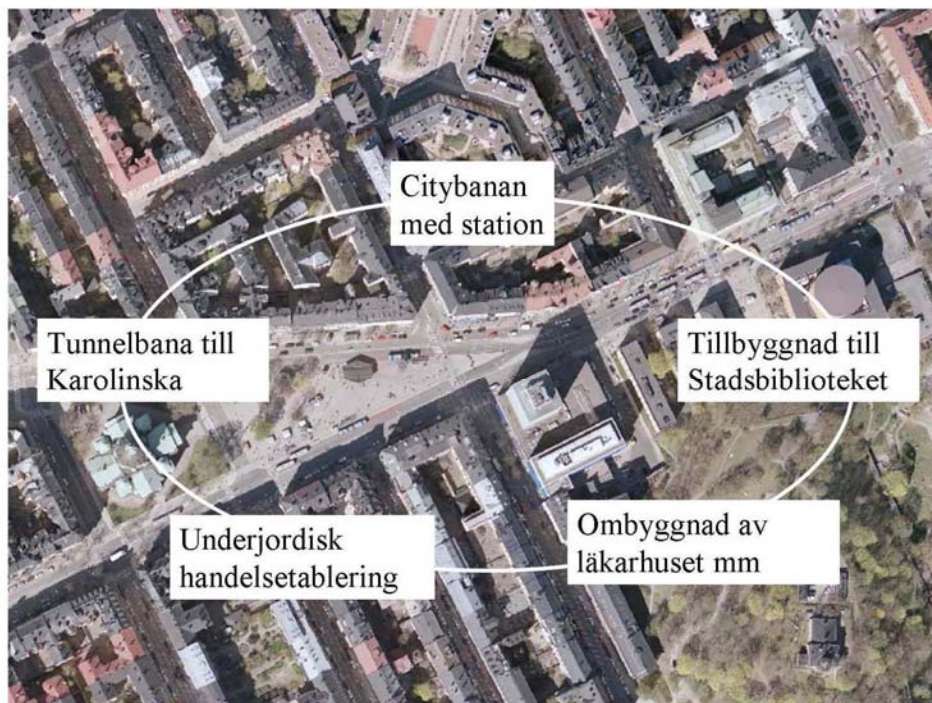
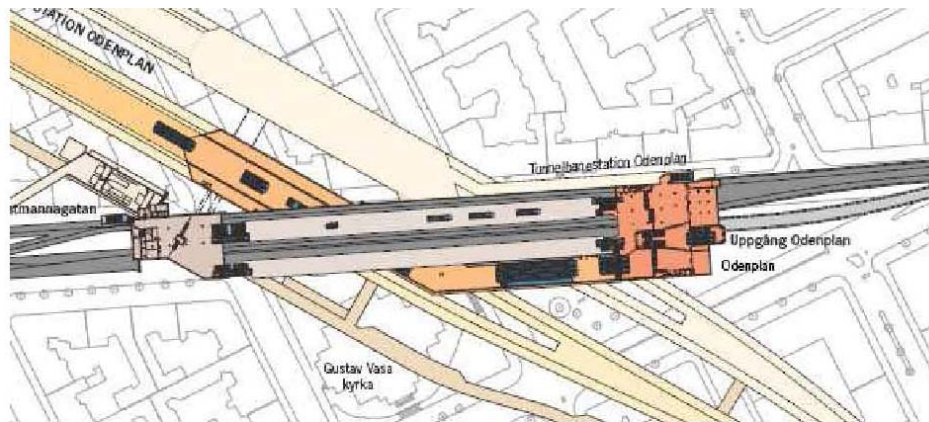


Fig. Översikt med aktuella planeringsprojekt kring Odenplan.



*Fig. Citybanan med dubbla spårtunnlar under Odenplan.*



*Fig. Odenplan med ny entré till tunnelbanan och Citybanan enligt förslag av Brunnberg-Forsshed arkitekter. Lösningen kan komma att ses över i samband med förslaget till ny handelsetablering.*

### 13. Stockholm City Library, architectural competition 2007

X



*Fig. "Delphinium"*

### 14. Stockholm Concert Hall, architectural competition 1920

Winning entry in an open architecture competition in Swedish grace, designed by architect Ivar Tengbom. Later refurbished during 1970s by his son Anders Tengbom. Tengboms Arkitekter AB one of Sweden's most well-established architects' office, still going strong.

Fountain in front of building by Carl Milles, the Orpheus fountain.

### 15. Filmstaden, architectural competition presumably late 1980s

Part of the Haymarket city, in Swedish Hötorgscity,, the new commercial City on Stockholm skyline, the five blasts of the trumpet, as the skyscrapers are called. Realized 1955-1966.

All famous Swedish architects have been involved in this urbanistic realization of modern town planning within the old structure, eradicating historical buildings from earlier centuries.

Filmstaden is the latest realization and ends the project. And architectural competition in late 1980s, won by FFNS architects under supervision of Per Kallstenius. Now, Mr Kallstenius is city architect of Stockholm.

### 16. The Clarion Sign Hotel, 2007, presumably parallel commission in close collaboration with City of Stockholm.

Architect: Wingårdhs Arkitekter AB, Stockholm.

### **17. The Bonnier's skyscraper, architectural competition 1937/**

Winning entry in an open architecture competition in 1937, designed by architect Ivar Tengbom and Anders Tengbom. Erected in 1946-49.

Lower office building extensions in 1964 and 1972.

### **The Bonnier Art centre, 2006.**

Bonniers Konsthall was designed by the architects Johan Celsing Arkitektkontor, with a façades in glass and steel, that follows the curve of Torsgatan. The art venue takes up the entire ground floor, with an area of 2000 square metres, with reading room and gallery rooms. Here you also find the café run by Riddarbageriet.

### **18. View to St Erik quarters, architectural competition 1991**

Invited architectural competition by Sweden's largest Housing Association, HSB, in 1991 with 4 competing offices.

Winner: Brunberg & Forshed, Stockholm, Sweden.

### **19. The World Trade Centre, architectural competition 1980**

Invited architectural competition in 1980.

Winning entry by Ralph Erskine and associated architects for this project.

Severely refurbished in 2007-2008, changing fundamental architectural ideas of an interior square with reference to Italian city of Siena.

### **20. The Hotel Continental, The Crystal, on-going architectural competition 2009,**

Invited competition with explorative nature.

Invited architects:

White Arkitekter AB, Stockholm, Sweden

CF Möller, Copenhagen, Denmark.

Wingårdhs Arkitekter AB, Stockholm, Sweden

A1 Arkitekter, Stockholm, Sweden.



from left to right:

A1 Arkitekter; CF Möller Arkitekter; Wingårdhs Arkitekter; White Arkitekter

### **21. Clara's Church, surrounding quarters, invited architectural competition in 1955**

Competition organized by the City of Stockholm in order to solve the aesthetic and architectural problem of linking the old church of St Clara, 1575-1590 to the modern town planning.

Winning entry by Lennart Tham, proposing two 5-storey high building with glazed façade toward street of Klarabergsgatan, but a more monolithic façade with occasional windows towards the church.

### **22. The Stockholm Cultural Centre, Kulturhuset/ Riksbanken, architectural competition 1965-66**

Open competition organized by City of Stockholm and Bank of Sweden. Winning entry by Peter Celsing. A glazed book shelf ending the street Sveavägen, thus blocking and breeching the axel from the Royal Castle to the Royal Summer Castle at Haga, a town planning idea dating from the 18<sup>th</sup> century, and a closed austere façade linking the side towards the Royal Castle with surrounding buildings of different ages.

### **23. The Royal Opera House, architectural competition, 1887**

The imminent cause to the architectural competition was the fire at the Opéra Comique de Paris, which was almost identical to the 18<sup>th</sup> century building, a replica of the Palace for Sophia Albertina, now Foreign Office, opposite the square.

Open architectural competition with 22 entries. First prize winner by Valfrid Karlsson, creating a new opera house but integrating the existing one by Swedish 18<sup>th</sup> century architect Adlercrantz for historical reasons (the opera where Gustav III where shot in midnight 14-15 March 1792).

Second prize suggested a completely new building, created by Axel Anderberg. In 1891, this entry was commissioned and second prize winner Anderberg was to be the architect of the future opera, commonly called the cigar box. First prize winner was commissioned to design temporarily used opera house.

### **25. The Tessin Palace, via the Royal Palace, The Oxenstierna Palace, The Stock Exchange, St Nicolas' Church Storkyrkan,**

The Royal Palace, 1690-1708, 1721-54 exterior architect Nicodemus Tessin, the younger, interior architect C Hårleman.

The palace of Tessin – residence of the architect to the Royal Castle Nicodemus Tessin the Younger, built in 1694-1700. Now residence for county governor of Stockholm.

The Oxenstierna Palace, 1653, designed by Swedish architect Jean de La Vallée, only a part of a larger planned palace has been realized.

St Nicolas' Church, Storkyrkan, late 13<sup>th</sup> century-early 16<sup>th</sup> century. 1736-42 exterior remodelling by JE Carlberg.

## **26. ST Gertrude's Church or German Kyrkan, spire, architectural competition in 1878**

Open architectural competition won by a German architect, R Gressner

## **27. Riddarholmen Church, and historical buildings**

Riddarholmen Church – the royal burial church in the midst of several 17<sup>th</sup> century palaces for Swedish Noble families, nowadays used by different public institutions.

## **28. Birger Jarl's Tower**

Reminiscent of medieval defence buildings protecting central city of Stockholm

## **29. View to Stockholm City Hall, architectural competition 1903**

Open architectural competition in two steps, the first as a prequalification to the second competition. Only the second part of the competition was compensated.

Six entries from step 1 to step 2, among which Ragnar Östberg's entry. Realized in 1911-1923.



**30. Square Kornhamnstorg view to Slussen, commission 1928,  
architectural competitions in 1992, 2004, 2008**



winning entry by Foster+Partners and Berg Arkitektkontor.

**References:**

Waern, R, 1996: Tävlingarnas tid. Avhandling Chalmers.

Andersson, HO, Bedoire, F, 1988: Stockholm . Architecture and Townscape.

Enqvist, T, 2008: Tjänsteutlåtande, Startpromemoria – ändring av detaljplan för fastigheten Orgelpipan 6 mm i stadsdelen Norrmalm, Stockholm (Huvudentré till Citybanan, hotell och kontor). Stockholms Stadsbyggnadskontor.

Groth, K, 2008: Lägesredovisning av pågående planering vid Odenplan mm. Stockholms Stadsbyggnadskontor.