



KTH Land and Water
Resources Engineering

Welcome to a seminar on

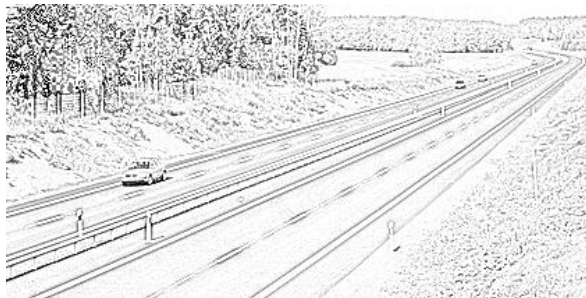
DATA ON ROADS AND TRANSPORTATION

– THE SWEDISH NATIONAL ROAD DATABASE AND SAMPERS

Time: Friday 25 March, 2011, 10.15 – 12.00

Venue: Room V22, Teknikringen 72, 1 stairs up

The Swedish National Road Database is available for KTH researchers and students through KTH library. At the seminar, the Swedish Transport Administration is giving us an opportunity to get acquainted with this database, its contents and how to extract information from it. Further, the travel forecasting tool SAMPERS will be presented.



Programme:

Time	Theme	Presenter
10.15 – 11.15	The Swedish National Road Database	Jan-Eric Oskarsson, the Swedish Transport Administration
11.30 – 12.00	SAMPERS – a national transport model	Daniel Jonsson, Transport and Location Analysis, KTH

The seminar is open for KTH researchers and students. It is arranged by the Environmental Management and Assessment research group as part of the research project "Environmental assessment of road geology and ecology in a system perspective", a joint research project between several divisions at KTH and Lund University. The seminar will be held in English. For further information and registration, please contact Ulla Mörtberg, mortberg@kth.se.

Welcome!

Ulla Mörtberg

Environmental Management and Assessment research group (<http://www.kth.se/abe/inst/lwr/grupper/ema>)
Dept of Land and Water Resources Engineering, KTH
SE-100 44 Stockholm, SWEDEN