

**Installation Guide**  
**LabVIEW 2018**

## Getting started

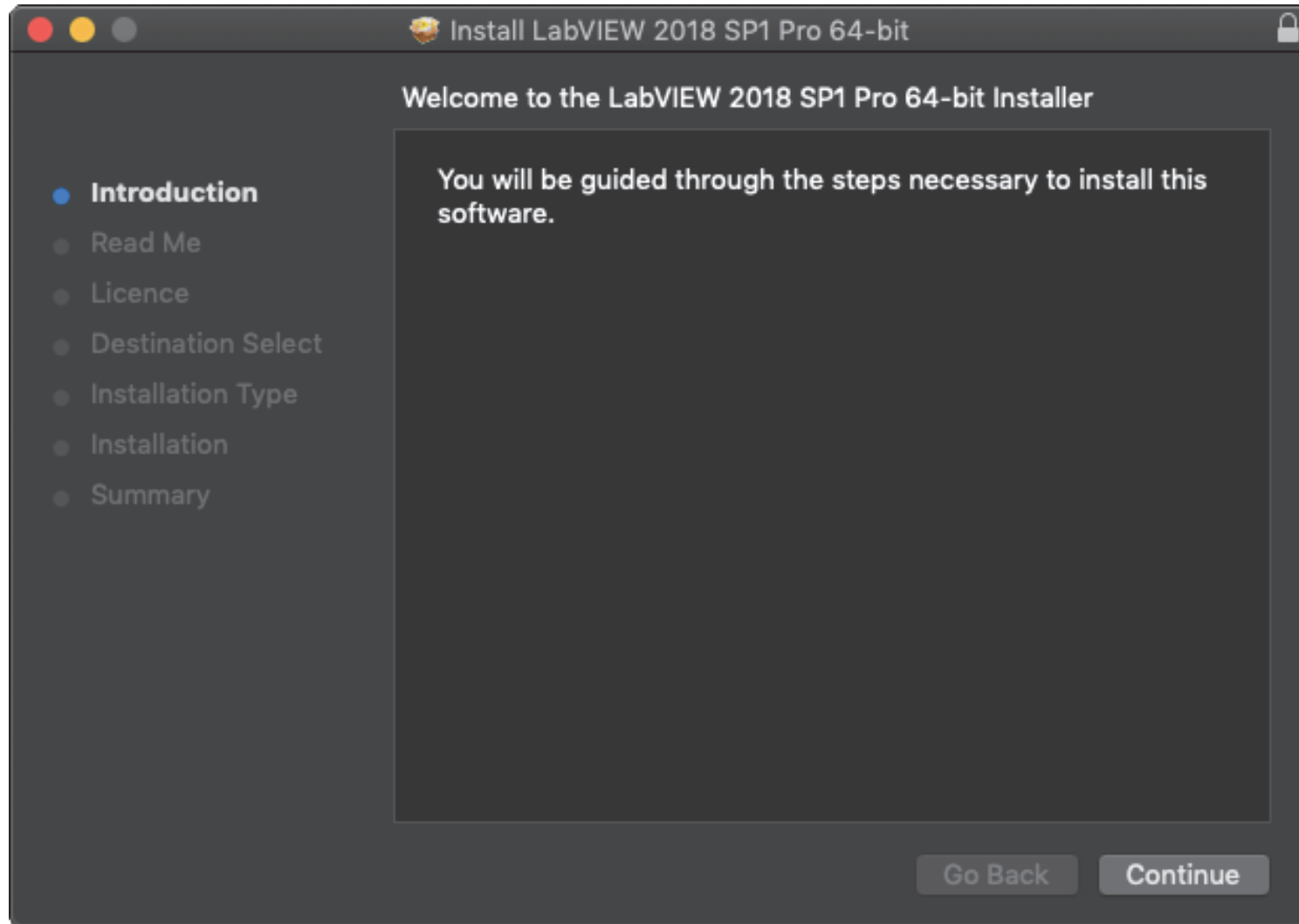
Mount the installer image by double-clicking the file you downloaded (e.g. *labview2018sp1mac.iso*). If the finder window does not appear double-click the mounted image icon (e.g. *LabVIEW 2018 SP1 Pro*).

Double-click the *LabVIEW 2018 SP1 Pro 64-bit* icon in the finder window to launch the installer.



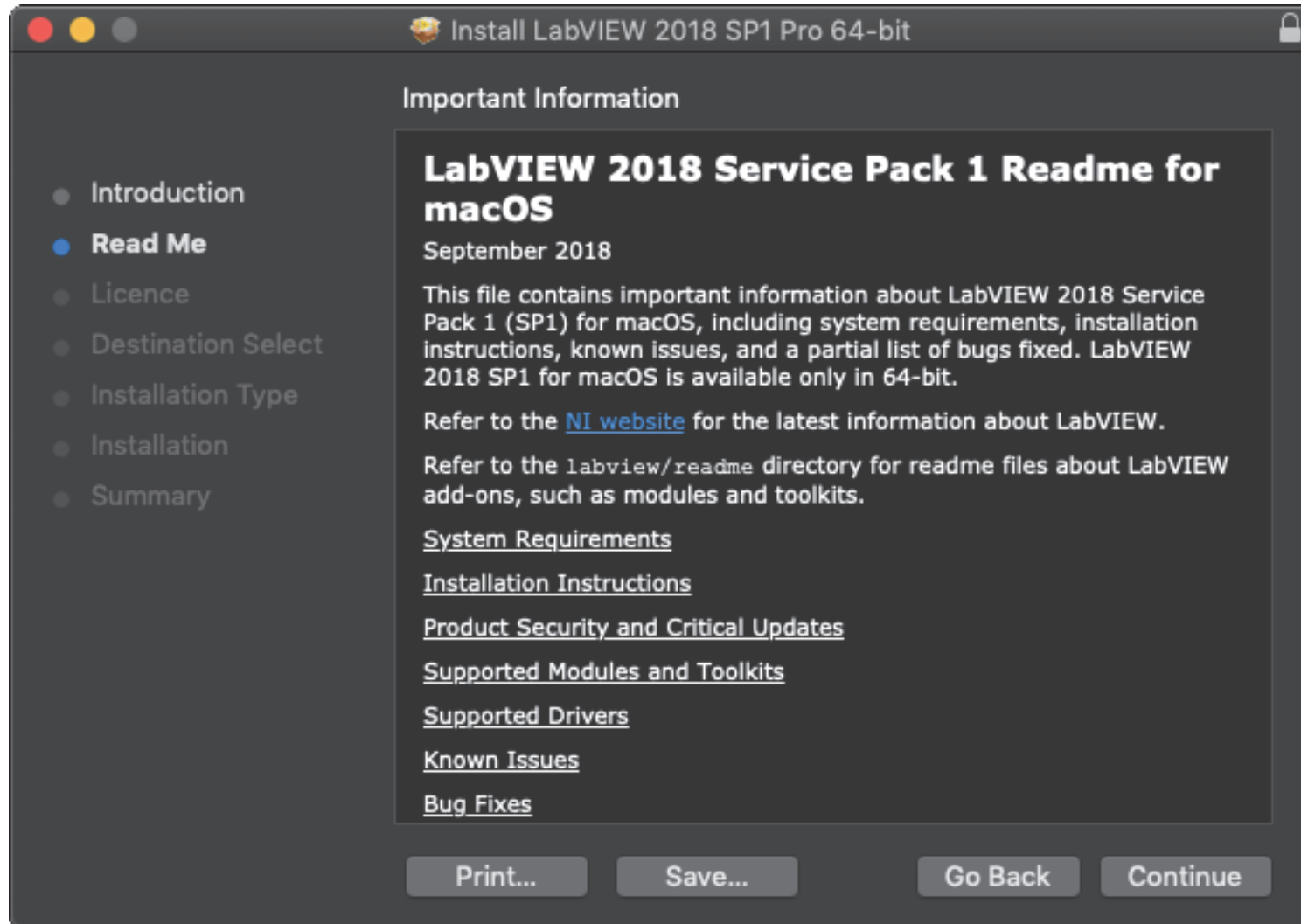
## Step 1

Press **Continue**.



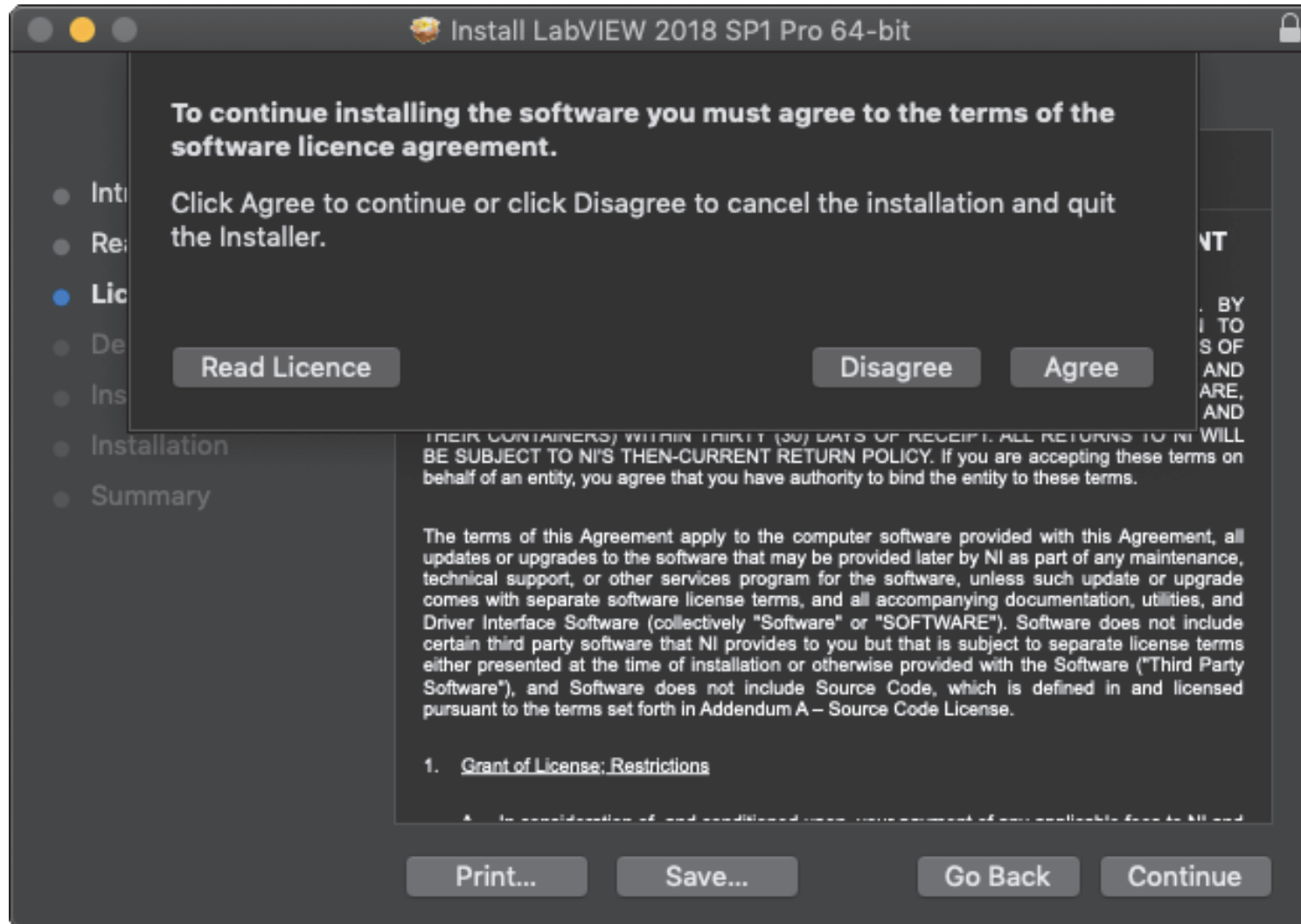
## Step 2

Press **Continue**.



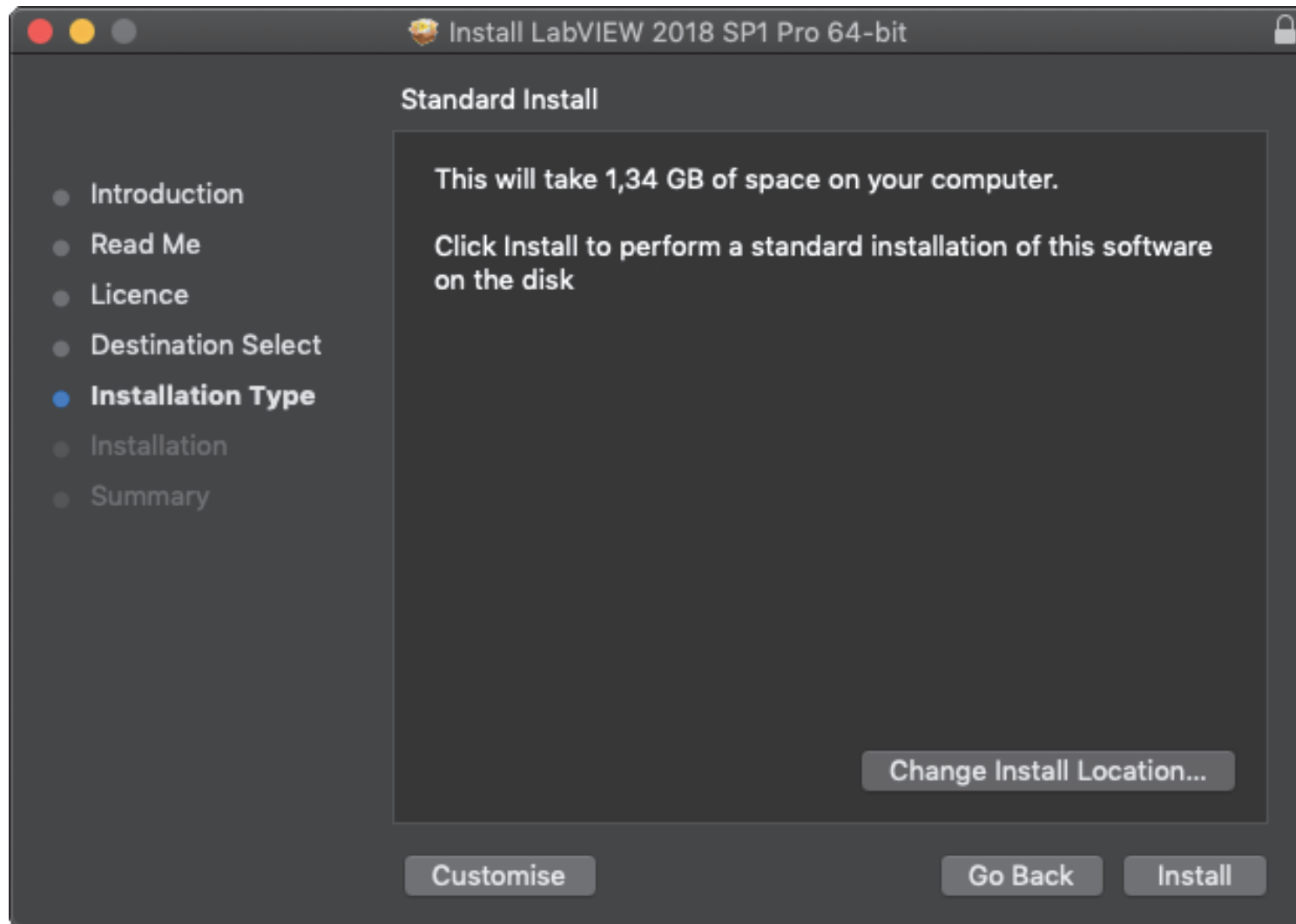
### Step 3

Read the license agreement and press **Continue** if you accept the terms. Press **Agree** to confirm and continue.



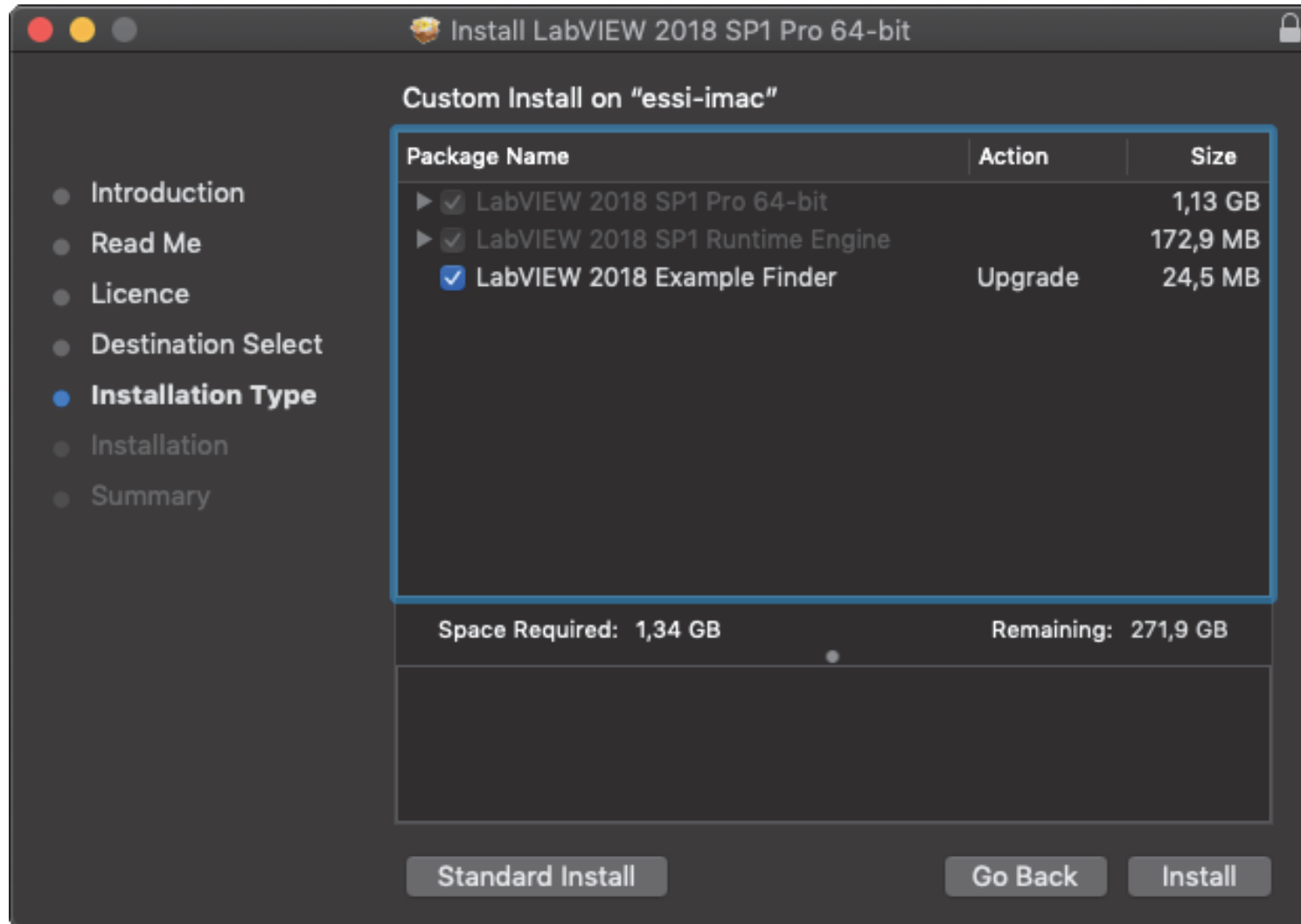
#### Step 4

First specify a destination for the installation (if the default suggested is not adequate). If you also wish to select which packages to install press **Customize** (and proceed to **Step 5**). Otherwise press **Install** (and skip to **Step 6**).



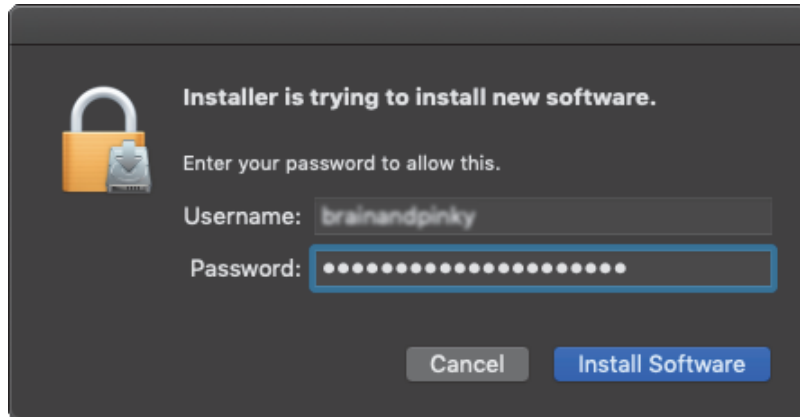
## Step 5

Select which add-ons and modules you wish, and/or press **Install**.



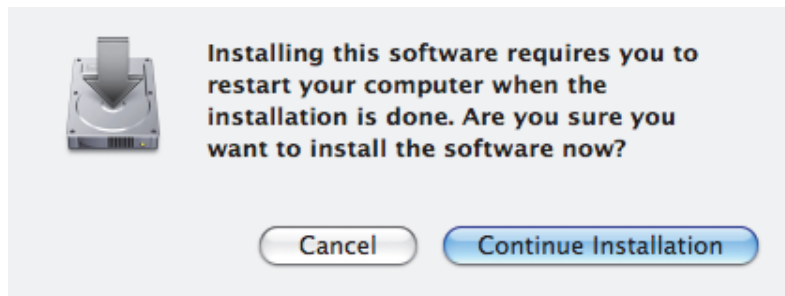
## Step 6

Now type in the name and password for your administrative account on the computer and click **Install Software** to continue.



## Beware

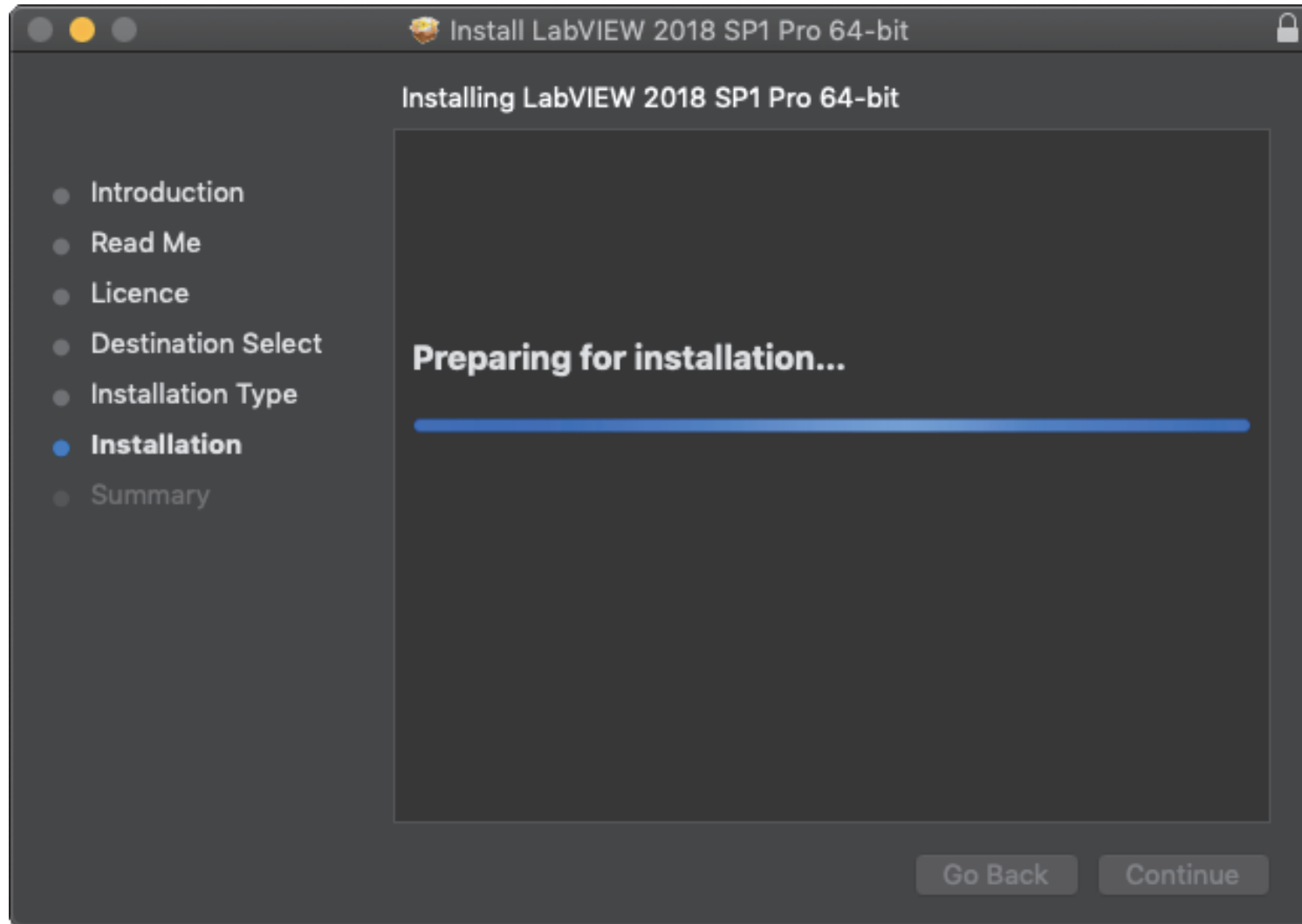
If you receive this warning, simply press **Continue Installation** to proceed with the installation. Do note that you have to restart your computer after the installation is complete.





## Step 7

This may take some time.



## Step 8

Press **Restart** to finish the installation and restart your computer.

