

**Installation Guide**  
**LabVIEW 2018**

## Getting started

Open the iso-file you downloaded by right-clicking on it and choosing **Mount**. If AutoRun/AutoPlay is disabled on your computer start the installer by locating and executing *autorun.exe* (or *setup.exe*) on the virtual drive (e.g. on drive letter *D*).

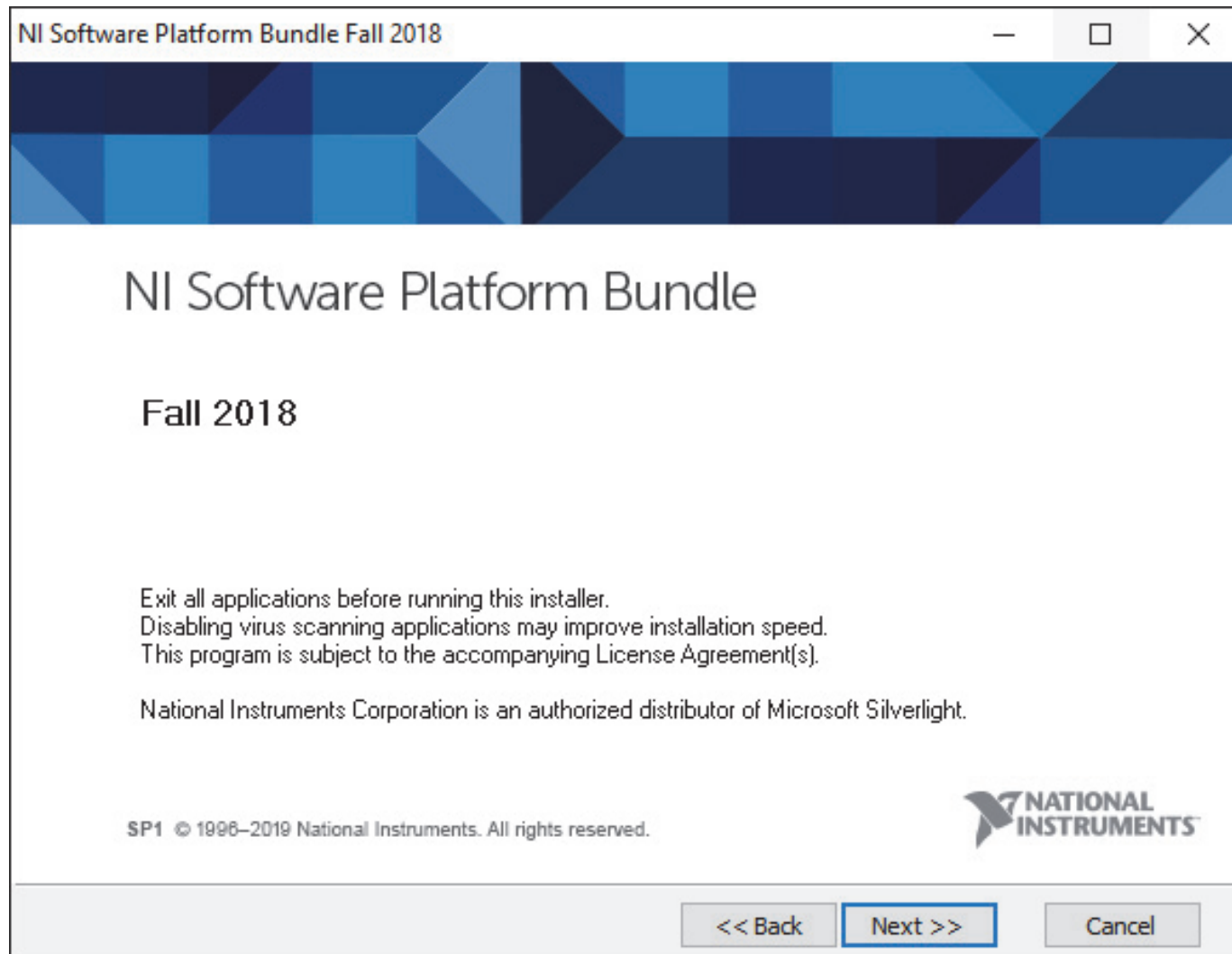
### Step 1

Press **Install Software**.



## Step 2

Press **Next**.




### Step 3

Run the “**Take the Assessment**”-test first to allow the installer estimate which modules/add-ons are compatible with your computer or simply press **Next** to continue. If you do not run the test, you can still proceed, but it may result in errors during the installation.

NI Software Platform Bundle Fall 2018

### Which LabVIEW Product Is Right for Me?



This installer includes both LabVIEW 2018 SP1 and LabVIEW NXG 3.0, the next generation of LabVIEW.

Install LabVIEW 2018 SP1 only

Install LabVIEW NXG 3.0 only

Install both LabVIEW 2018 SP1 and LabVIEW NXG 3.0

Take the Assessment

This version of LabVIEW NXG includes a subset of LabVIEW features and hardware support. Complete this assessment to determine whether LabVIEW NXG 3.0 meets the requirements of your application.

<< Back   Next >>   Cancel

#### Step 4

Press **Next** to continue. If you choose to not activate LabVIEW at this stage you will be required to do so after the installation.

NI Software Platform Bundle Fall 2018

Select Installation Option

NATIONAL INSTRUMENTS

I want to activate one or more products in this installer.

Select and activate products automatically based on my User Account or serial numbers (Internet connection required).

I want to evaluate products only.

[Privacy Statement](#)

<< Back   Next >>   Cancel


## Step 5

Activation requires an NI user account. If you have not created one already you may do so by clicking on the “Create account” link or going to the NI website.

NI User Account ×

### NI User Account

Log in to continue



Email

Password [Forgot password?](#)

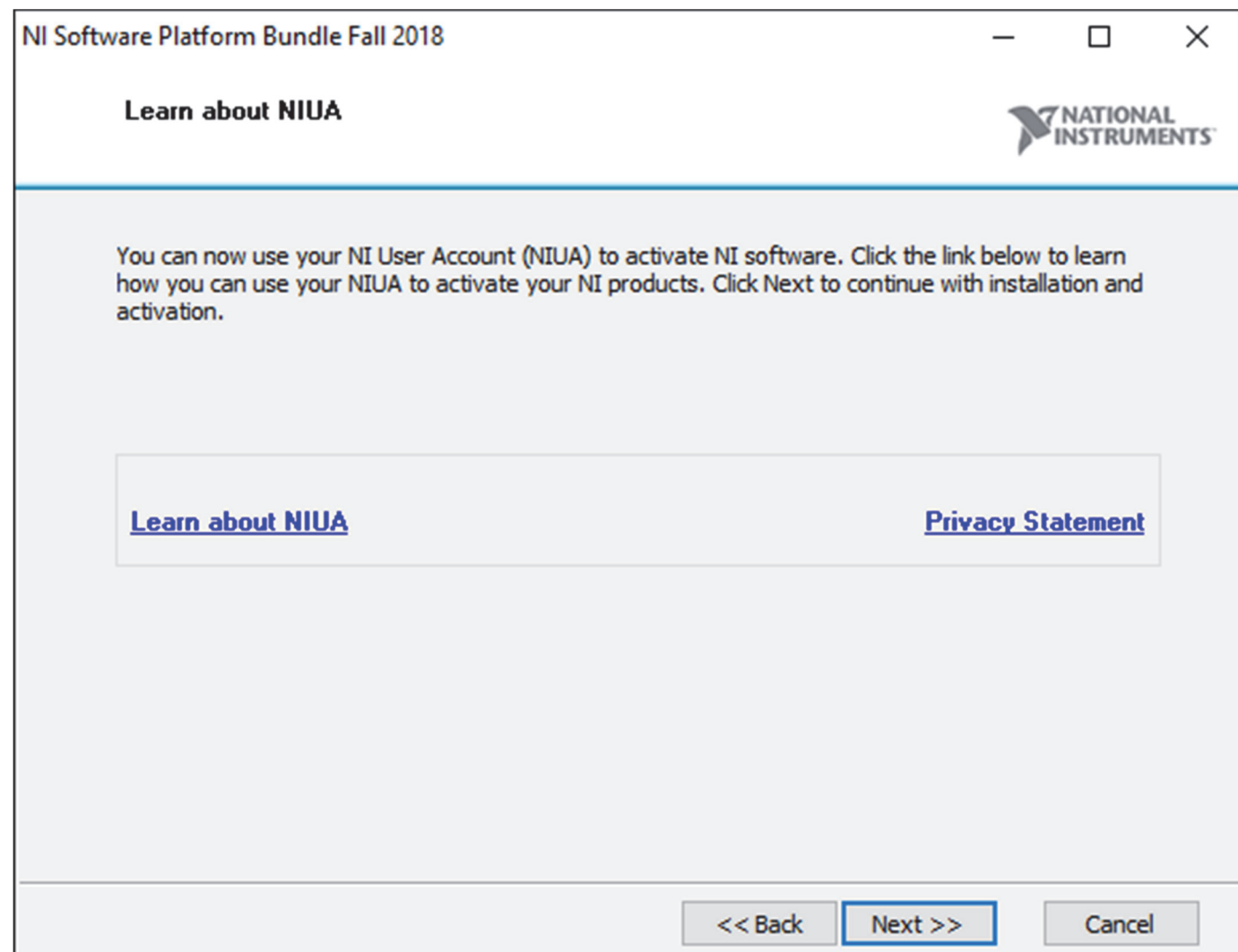
**LOG IN**

---

[Create account >](#)

## Step 6

Press **Next**.



## Step 7

Enter the serial number found on the KTH Software Download page for LabVIEW and press **Add Serial Number**. Repeat this step if you have additional serial numbers you wish to add.

NI Software Platform Bundle Fall 2018

**Enter Serial Numbers**

NATIONAL INSTRUMENTS

Enter all serial numbers for the products in this installer that you want to install.

**Add Serial Number**

Serial Numbers	Product Names

**Remove Serial Numbers**

<< Back   Next >>   Cancel




## Step 8

Press **Next**.

NI Software Platform Bundle Fall 2018

**Enter Serial Numbers**

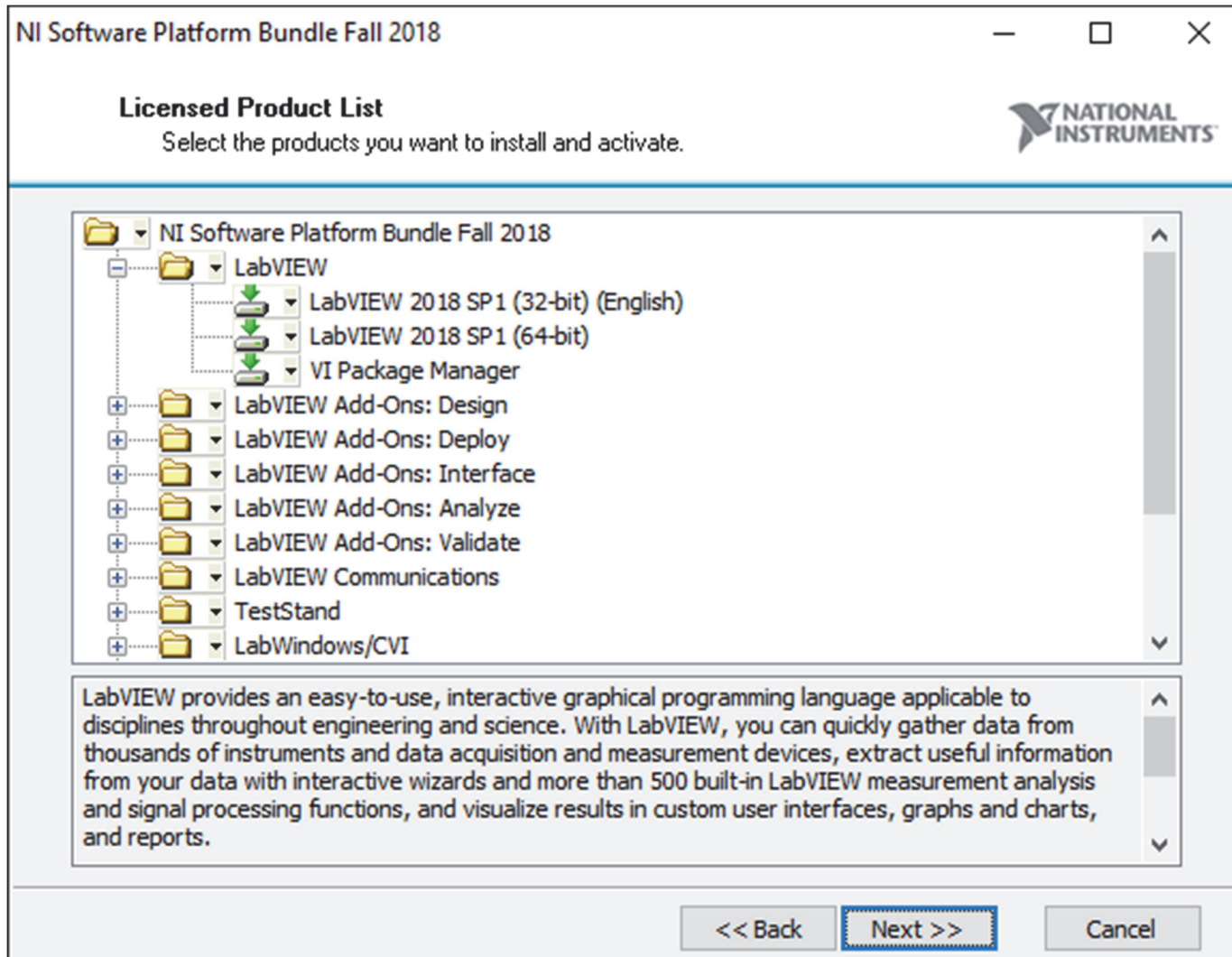


Enter all serial numbers for the products in this installer that you want to install.

Serial Numbers	Product Names
<input type="text"/>	Academic Site License
<input type="text"/>	
<input type="text"/>	
<input type="text"/>	
<input type="text"/>	
<input type="text"/>	
<input type="text"/>	
<input type="text"/>	
<input type="text"/>	

## Step 9

Make your selection and press **Next**. Note that some of the extra modules may require additional activation keys and that not all modules or add-ons may be compatible with your computer.



## Step 10

Press **Next**.

NI Software Platform Bundle Fall 2018

**Product Information**  
Please read the following information about the products to be installed.

Search for important messages and updates on the National Instruments products you are installing. To perform this search, your IP address will be collected in accordance with the National Instruments Privacy Statement.

**Note: You will be given the opportunity to select the updates you want to install.**

[Privacy Statement](#)

<< Back   **Next >>**   Cancel

## Step 11

Specify the destinations for the installation and/or press **Next**. (You may have to repeat this step depending on which modules were selected for installation)

NI Software Platform Bundle Fall 2018

**Destination Directory**  
Select the primary installation directory.

Select the installation directory for National Instruments software  
C:\Program Files (x86)\National Instruments\ Browse...

Select the installation directory for LabVIEW (32-bit)  
C:\Program Files (x86)\National Instruments\LabVIEW 2018\ Browse...

Select the installation directory for 64-bit National Instruments software  
C:\Program Files\National Instruments\ Browse...

Select the installation directory for LabVIEW (64-bit)  
C:\Program Files\National Instruments\LabVIEW 2018\ Browse...

Select the installation directory for LabWindows/CVI  
C:\Program Files (x86)\National Instruments\CVI2017\ Browse...

Select the folder to install NI DIAdem (64-bit)  
C:\Program Files\National Instruments\DIAdem 2018\ Browse...

<< Back Next >> Cancel

## Step 12

Select *"I accept the above (x) License Agreement(s)"* and press **Next**.

(You may have to repeat this step depending on which modules/prerequisites are being installed)

NI Software Platform Bundle Fall 2018

**License Agreements**  
You must accept the licenses displayed below to proceed.

NATIONAL INSTRUMENTS

NI TestStand Functional Safety Editor Addendum FlexRIO Module NI FlexRIO Instrument Des

**NATIONAL INSTRUMENTS SOFTWARE LICENSE AGREEMENT**

CAREFULLY READ THIS SOFTWARE LICENSE AGREEMENT ("AGREEMENT"). BY DOWNLOADING THE SOFTWARE AND/OR CLICKING THE APPLICABLE BUTTON TO COMPLETE THE INSTALLATION PROCESS, YOU AGREE TO BE BOUND BY THE TERMS OF THIS AGREEMENT. IF YOU DO NOT WISH TO BECOME A PARTY TO THIS AGREEMENT AND BE BOUND BY ITS TERMS AND CONDITIONS, DO NOT INSTALL OR USE THE SOFTWARE, AND RETURN THE SOFTWARE (WITH ALL ACCOMPANYING WRITTEN MATERIALS AND THEIR CONTAINERS) WITHIN THIRTY (30) DAYS OF RECEIPT. ALL RETURNS TO NI WILL BE SUBJECT TO NI'S THEN CURRENT RETURN POLICY. IF YOU ARE ACCEPTING THESE

**The software to which this National Instruments license applies is:**

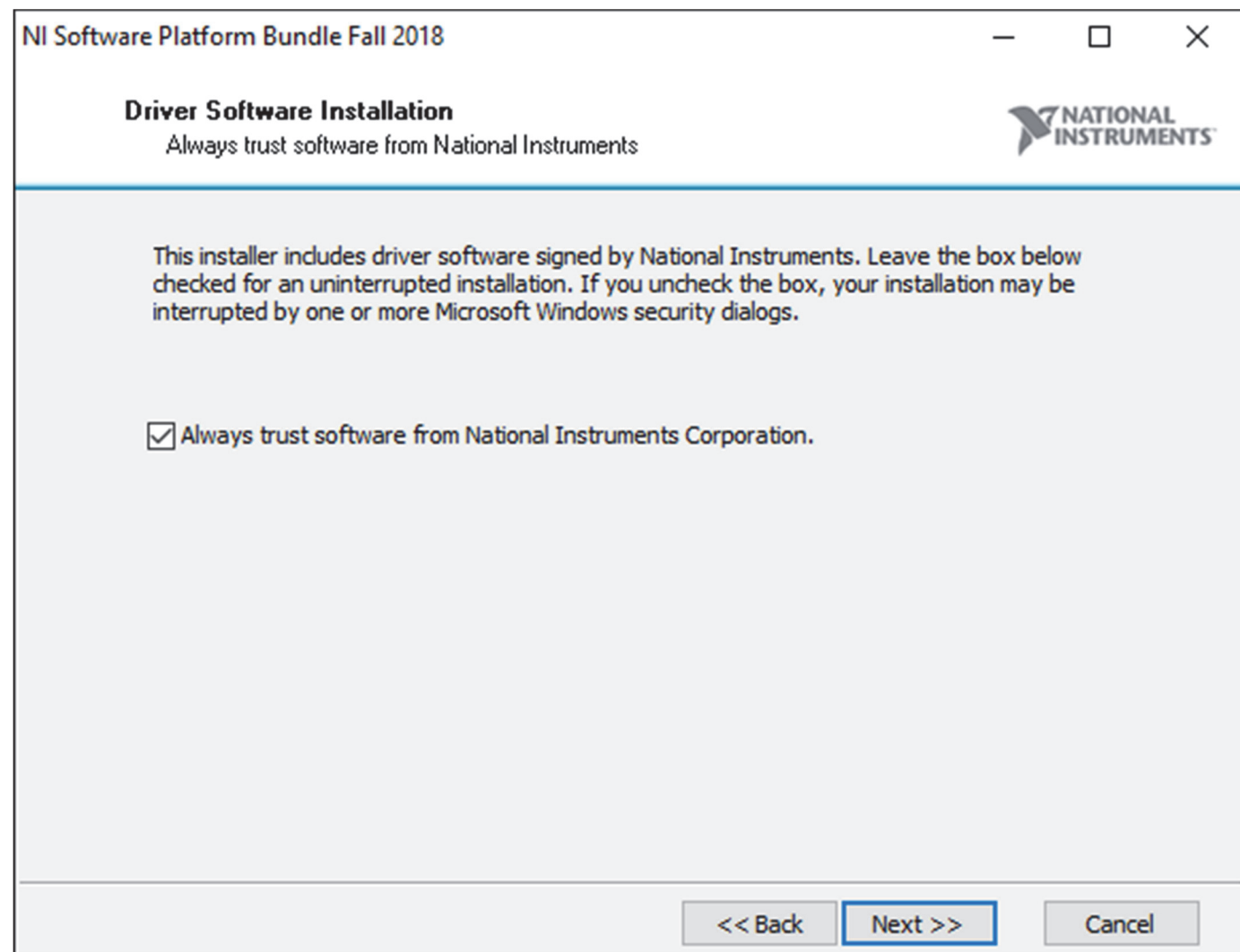
LabVIEW 2018 SP1 (32-bit) (English)  
LabVIEW 2018 SP1 (64-bit)  
VI Package Manager  
LabVIEW 2018 Control Design and Simulation Module

I accept the above 14 License Agreement(s).  
 I do not accept all these License Agreements.

<< Back Next >> Cancel

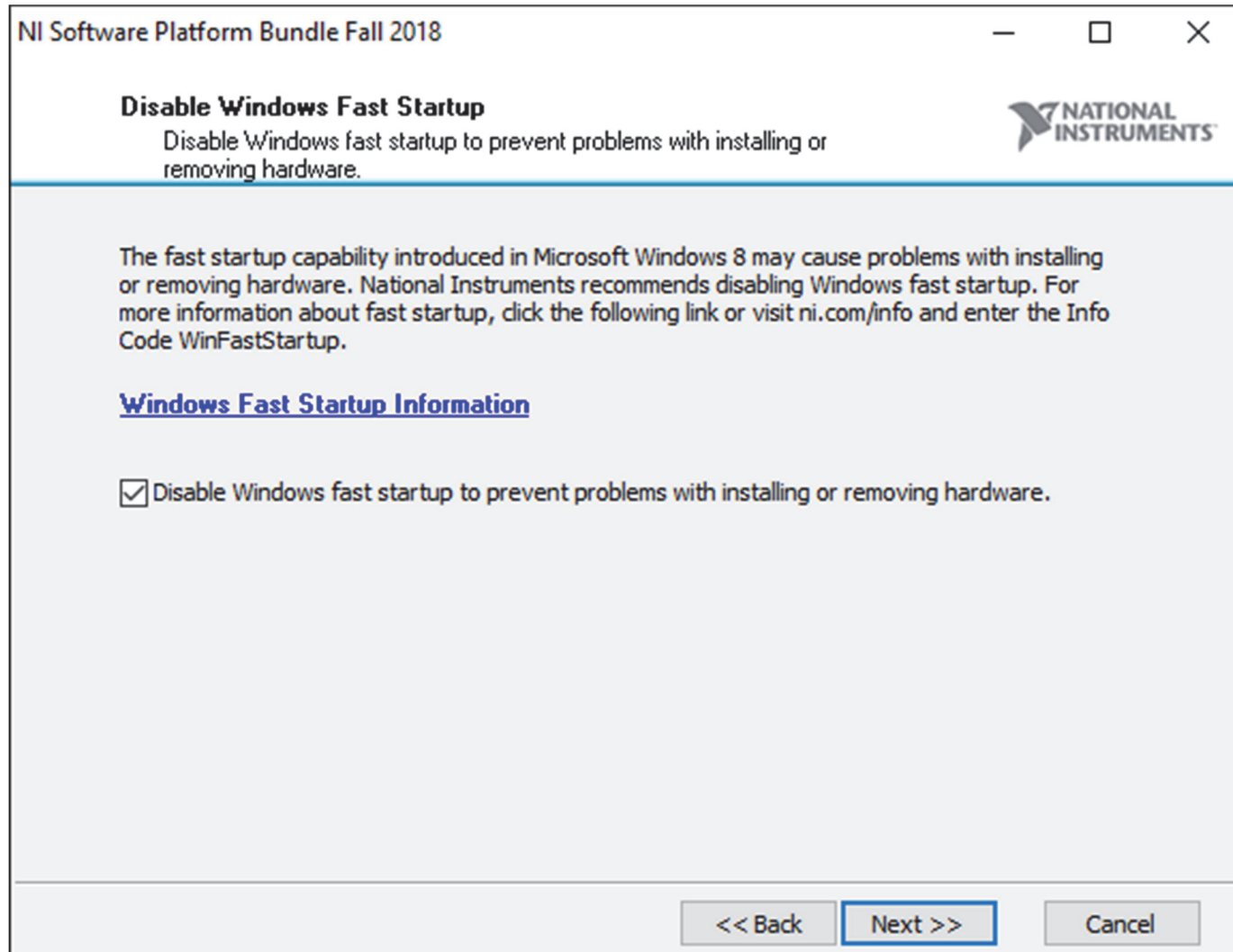
### Step 13

Press **Next**.




## Step 14

This option may not be needed but is recommended in order to avoid certain issues. Make your selection and press **Next**.



NI Software Platform Bundle Fall 2018

**Disable Windows Fast Startup**  
Disable Windows fast startup to prevent problems with installing or removing hardware.



The fast startup capability introduced in Microsoft Windows 8 may cause problems with installing or removing hardware. National Instruments recommends disabling Windows fast startup. For more information about fast startup, click the following link or visit [ni.com/info](http://ni.com/info) and enter the Info Code WinFastStartup.

[Windows Fast Startup Information](#)

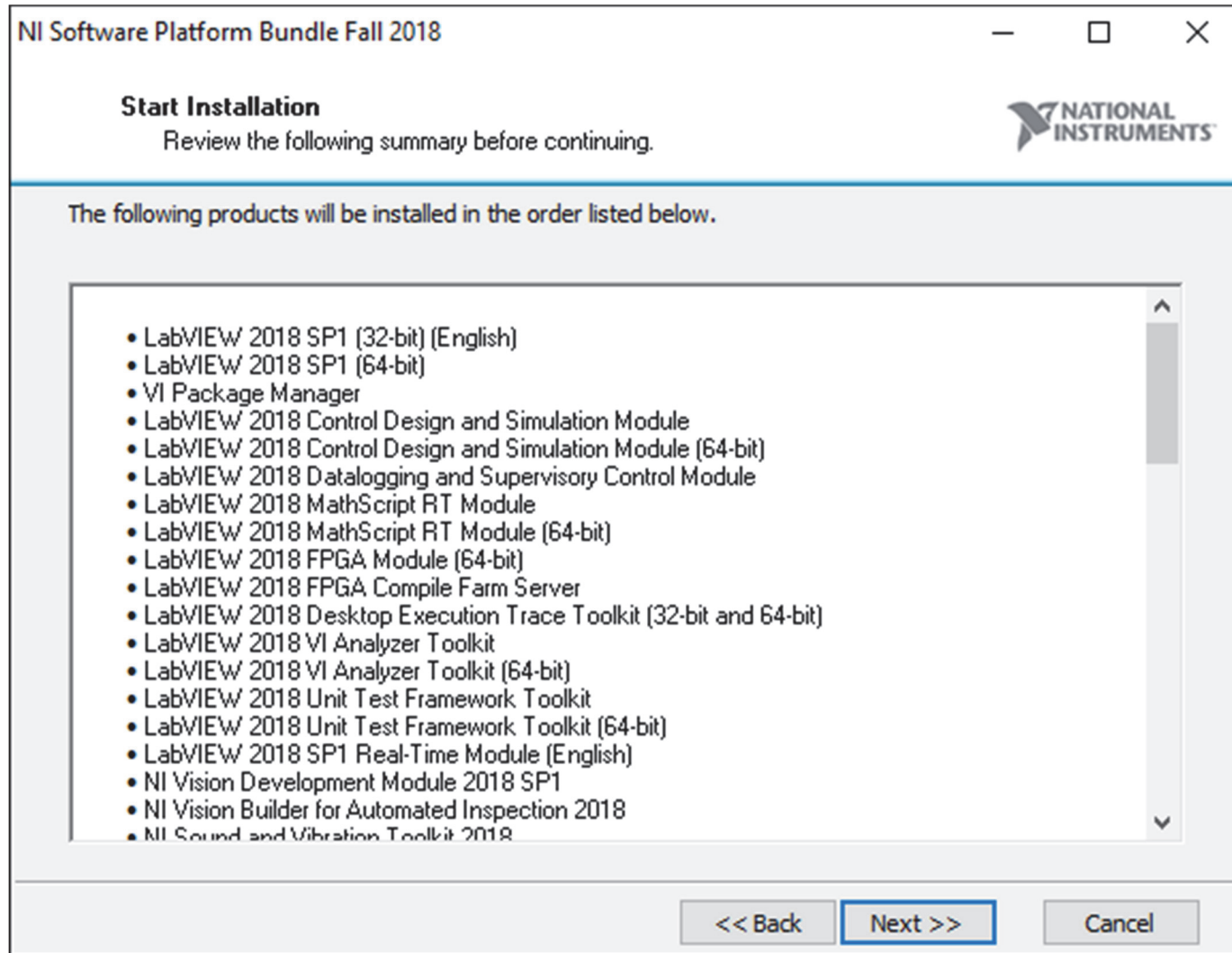
Disable Windows fast startup to prevent problems with installing or removing hardware.

<< Back   Next >>   Cancel



## Step 15

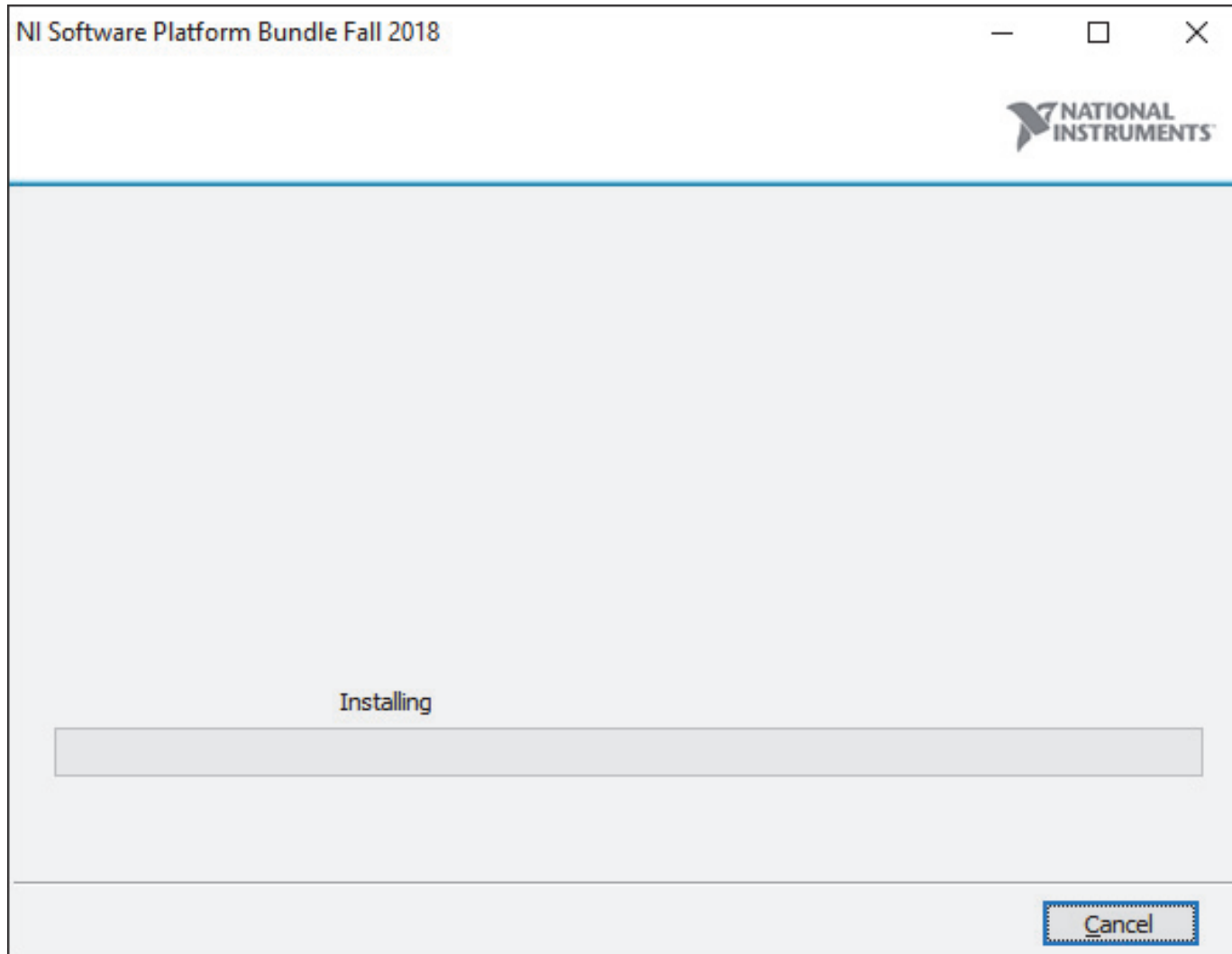
A last chance to review which modules will be installed. If needed you can go **Back** and deselect modules. Press **Next** to continue.





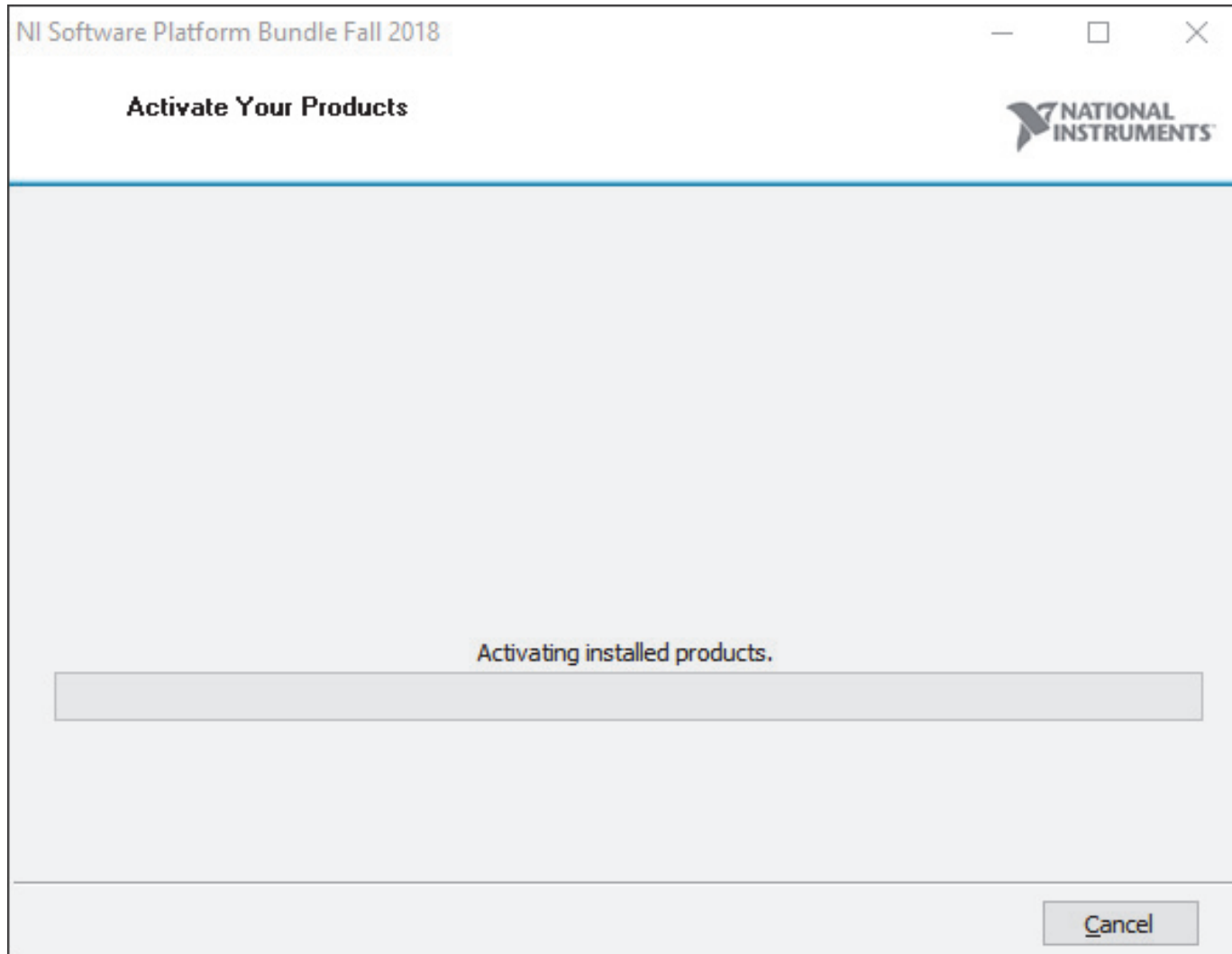
## Step 16

This may take some time.



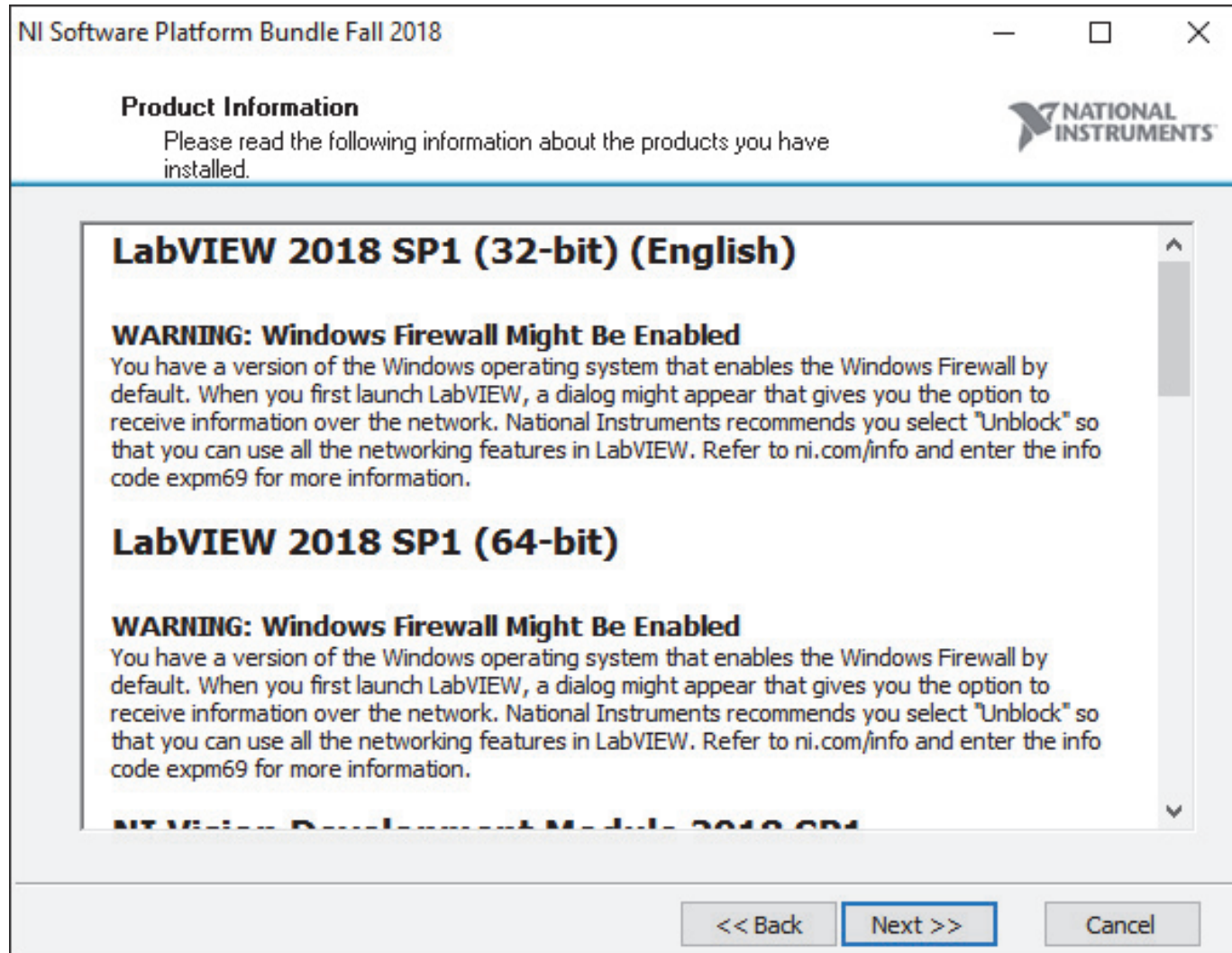
## Step 17

In most cases the activation will start automatically. This might take a while.



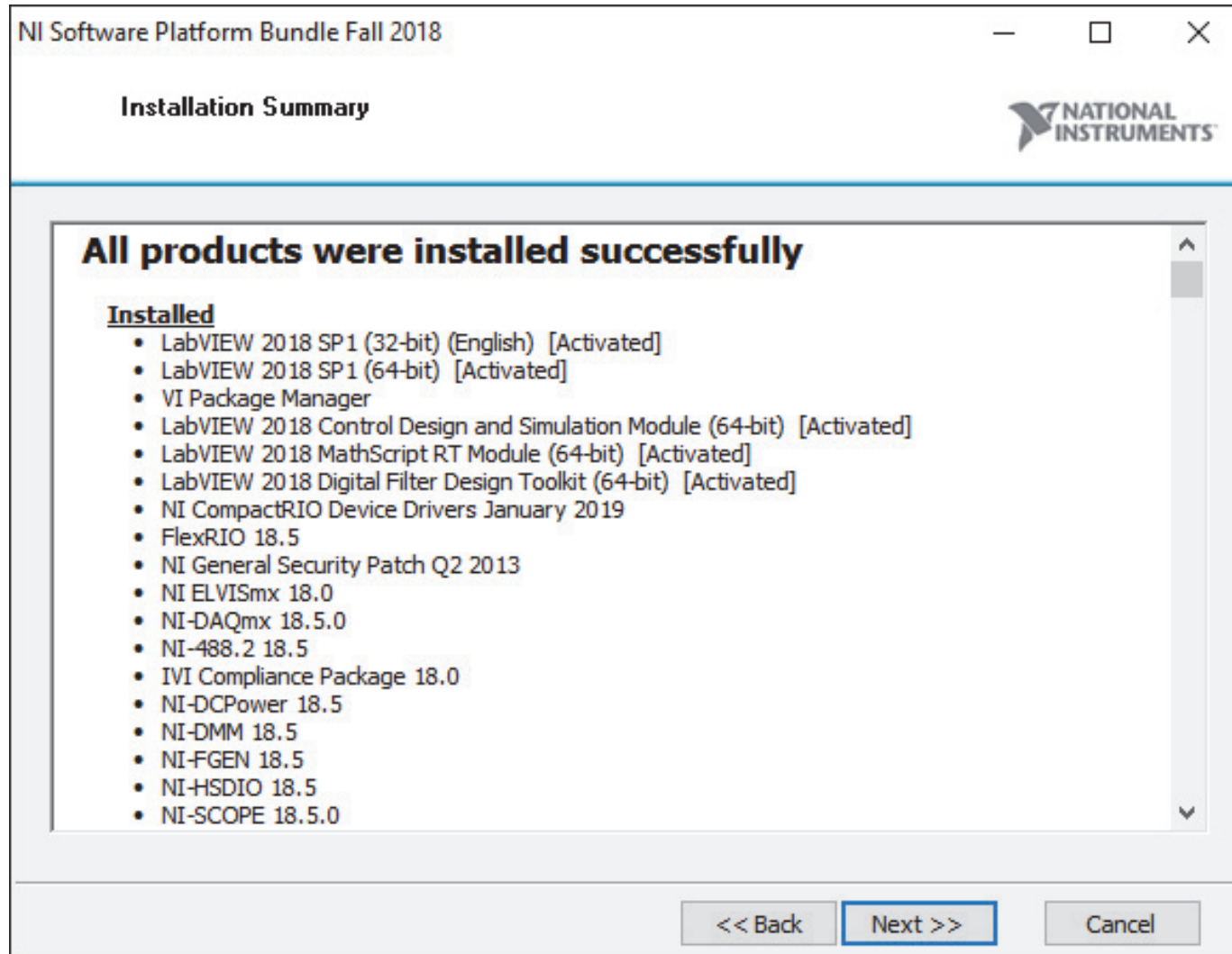
## Step 18

Press **Next**.



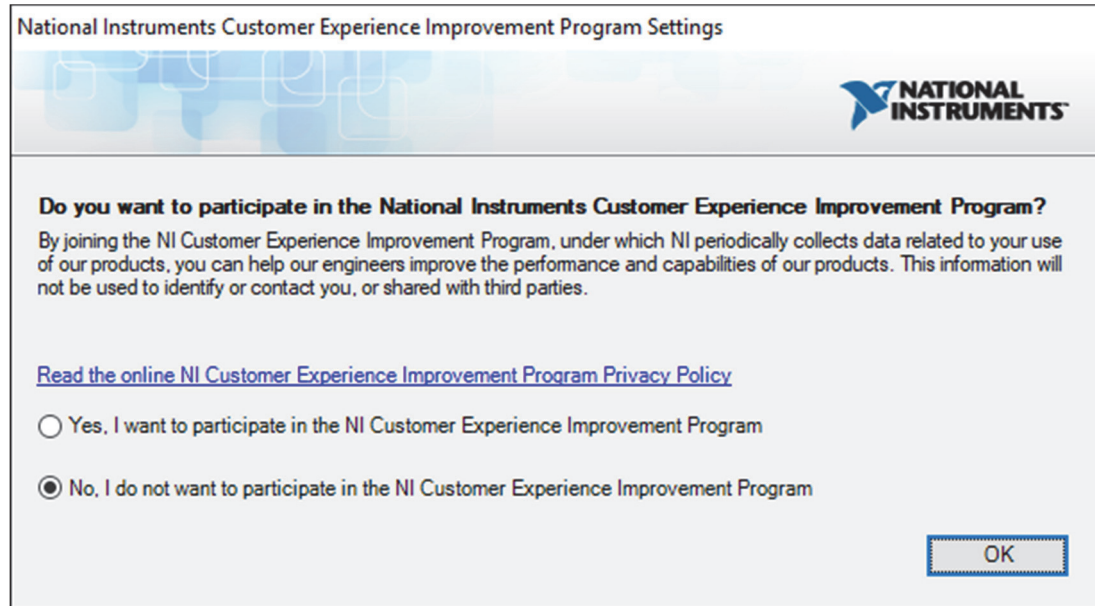
## Step 19

Here you can review which products were successfully activated, and which (if any) resulted in errors. Press **Next** to finish the installation.



## Step 20

Make your selection and press **Next** to end the installation procedure.



National Instruments Customer Experience Improvement Program Settings

**Do you want to participate in the National Instruments Customer Experience Improvement Program?**

By joining the NI Customer Experience Improvement Program, under which NI periodically collects data related to your use of our products, you can help our engineers improve the performance and capabilities of our products. This information will not be used to identify or contact you, or shared with third parties.

[Read the online NI Customer Experience Improvement Program Privacy Policy](#)

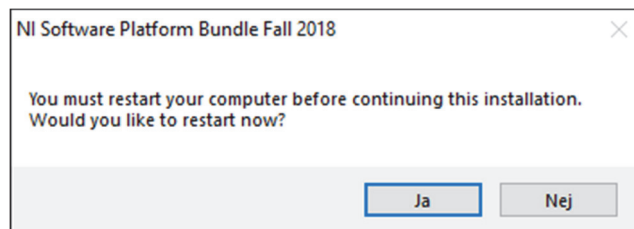
Yes, I want to participate in the NI Customer Experience Improvement Program

No, I do not want to participate in the NI Customer Experience Improvement Program

OK

## Beware

In most cases, finishing the installation will prompt the following message. In such a case simply press **Yes** to restart Windows. In some rare cases you may also be required to repeat the activation procedure when you start LabVIEW the first time.



NI Software Platform Bundle Fall 2018

You must restart your computer before continuing this installation.  
Would you like to restart now?

Ja Nej

## First run

On most Windows computers the users will receive a series of prompts to allow LabVIEW passage through the firewall the first time they run LabVIEW.

