

Installation Guide

MathType 6.7d

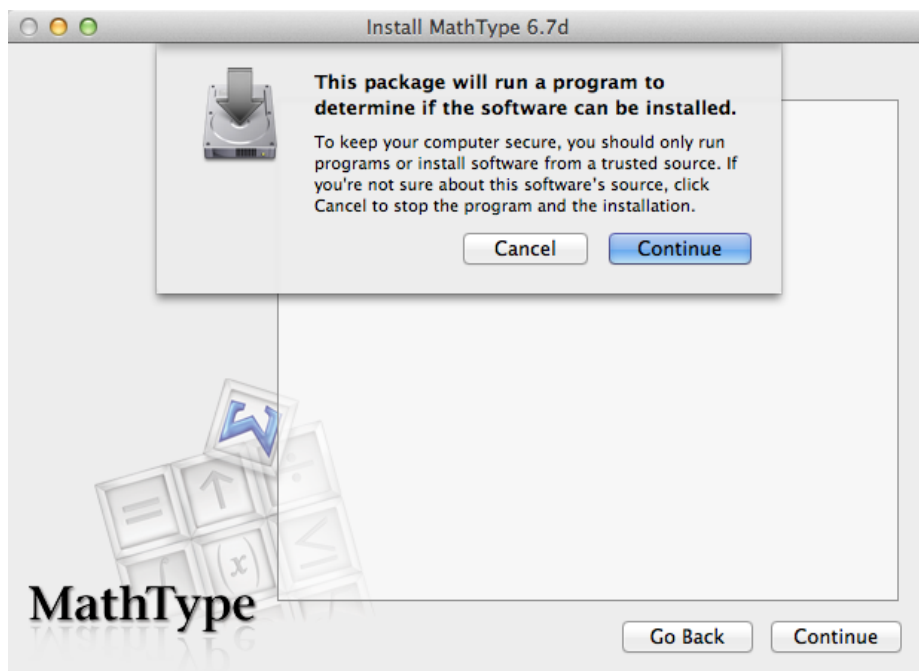
Getting started

Mount the installer image by double-clicking *mathtype67d.dmg*.

Double-click the “*MathType 6.7d Installer.mpkg*” icon in the finder window to launch the installer.

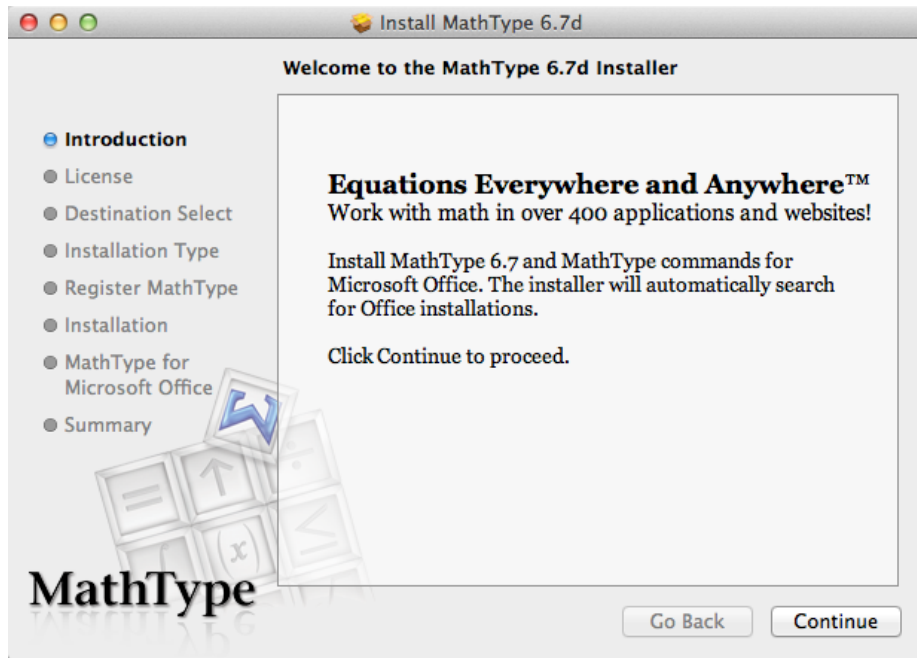


The installer will check whether your system meets the requirements. Press **Continue**.



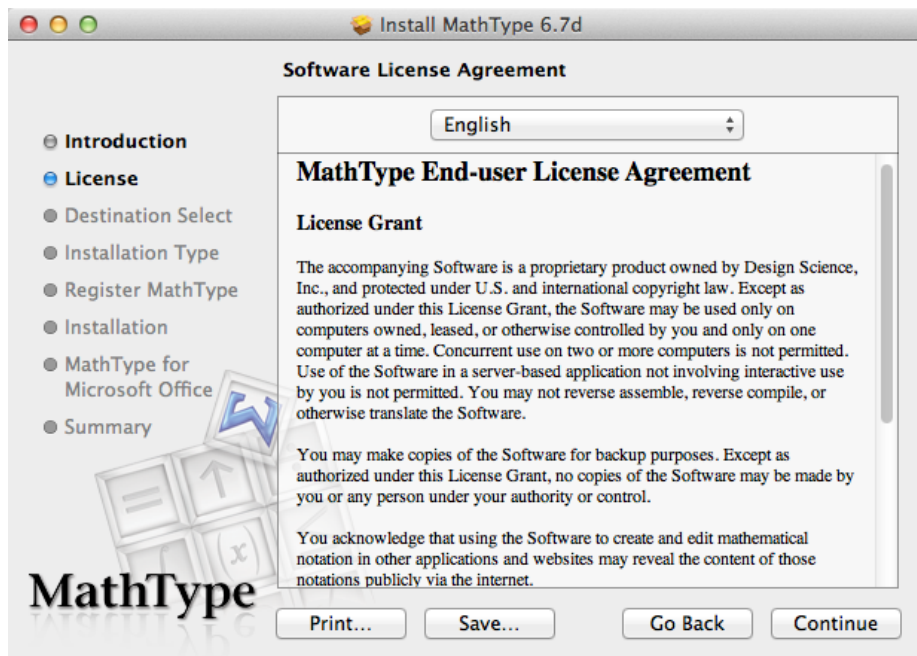
Step 1

Press **Continue** to start the installation.



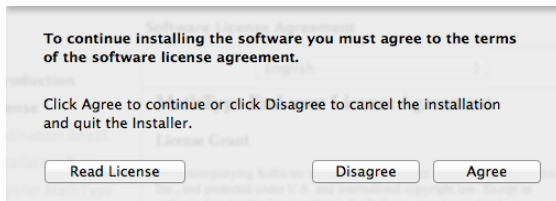
Step 2

Read the license agreement and Press **Continue**.



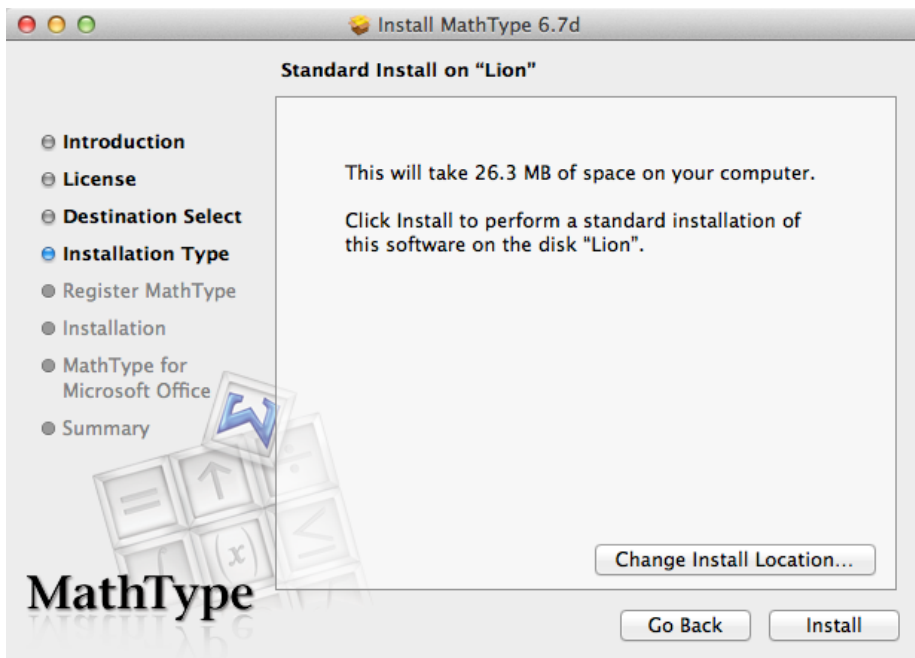
Beware

Press **Agree** if you agree with the license agreement in the previous step.



Step 3

Press **Change Install Location...** if you wish to install to another path or simply press **Install** to continue with the default installation path (which is sufficient in most cases).



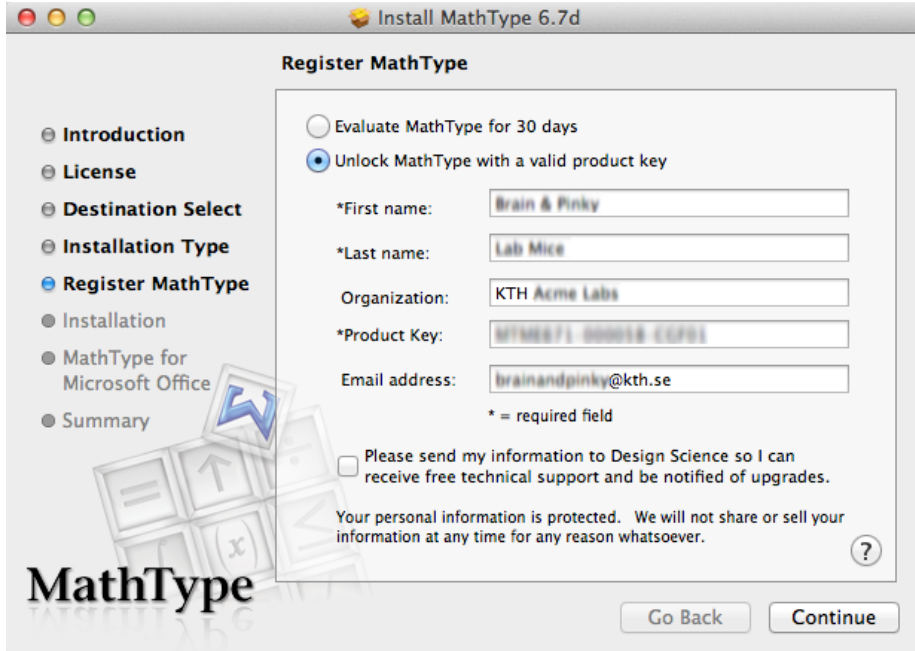
Beware

Now type in the name and password for your administrative account and press **OK** to continue.



Step 4

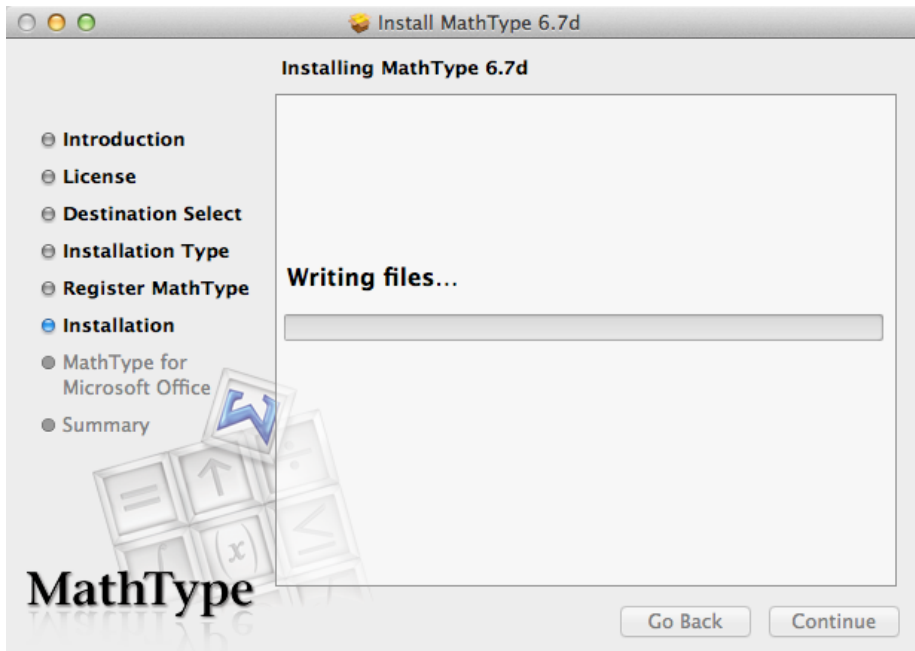
Select “Unlock MathType with a valid product key”. Enter your name, KTH as organization, the product key found on the ProgDist page for MathType, and your KTH-based email address. Press **Continue**.



The screenshot shows the "Register MathType" window in the "Install MathType 6.7d" installer. On the left is a navigation pane with the following items: Introduction, License, Destination Select, Installation Type, Register MathType (selected), Installation, MathType for Microsoft Office, and Summary. The main area contains two radio buttons: "Evaluate MathType for 30 days" (unselected) and "Unlock MathType with a valid product key" (selected). Below these are five text input fields: "*First name:" (filled with "Brain & Pinky"), "*Last name:" (filled with "Lab Mice"), "Organization:" (filled with "KTH Acme Labs"), "*Product Key:" (filled with "MTH6E7L 00018 10F01"), and "Email address:" (filled with "brainandpinky@kth.se"). A legend indicates "* = required field". There is an unchecked checkbox for "Please send my information to Design Science so I can receive free technical support and be notified of upgrades." Below this is a privacy notice: "Your personal information is protected. We will not share or sell your information at any time for any reason whatsoever." At the bottom right are "Go Back" and "Continue" buttons.

Step 5

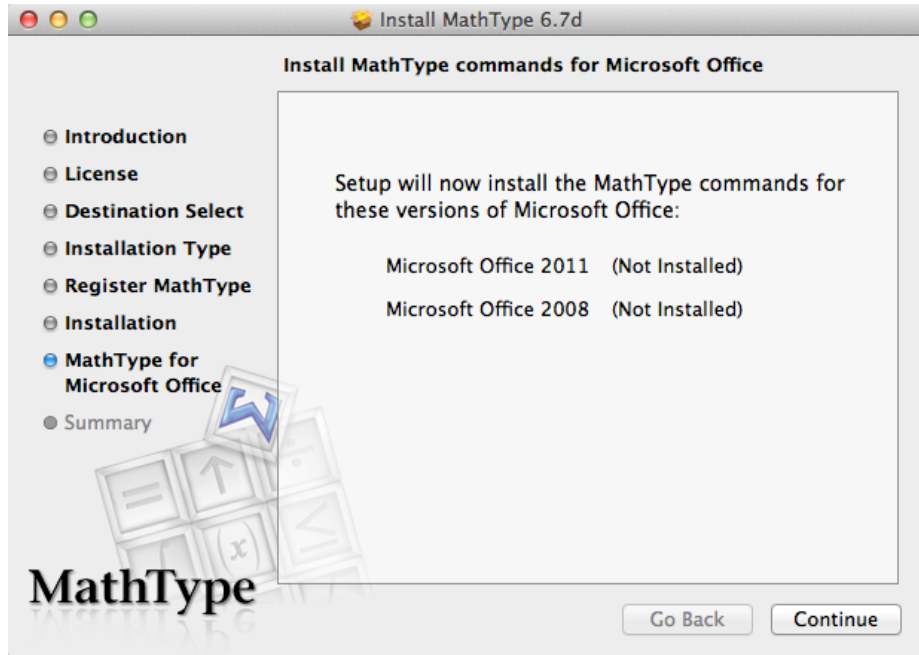
Wait for the files to be installed.



The screenshot shows the "Installing MathType 6.7d" window in the "Install MathType 6.7d" installer. The navigation pane on the left is the same as in Step 4, but "Installation" is now selected. The main area displays "Writing files..." above a progress bar. At the bottom right are "Go Back" and "Continue" buttons.

Step 6

If you have a new version of Microsoft Office installed, the installer will add itself to the suite. Press **Continue**.



Beware

If you receive this message simply press **Continue**.



Step 7

Press **Close** to exit the installer.

