

User Guide

Virtual CloneDrive

Installation	1
A note before installing.....	1
Getting started.....	1
Step 1	1
Step 2	2
Step 3	2
Step 4	3
Step 5	3
Step 6	3
Usage.....	4
The virtual drive	4
Mounting an iso-image file	4

Installation

A note before installing

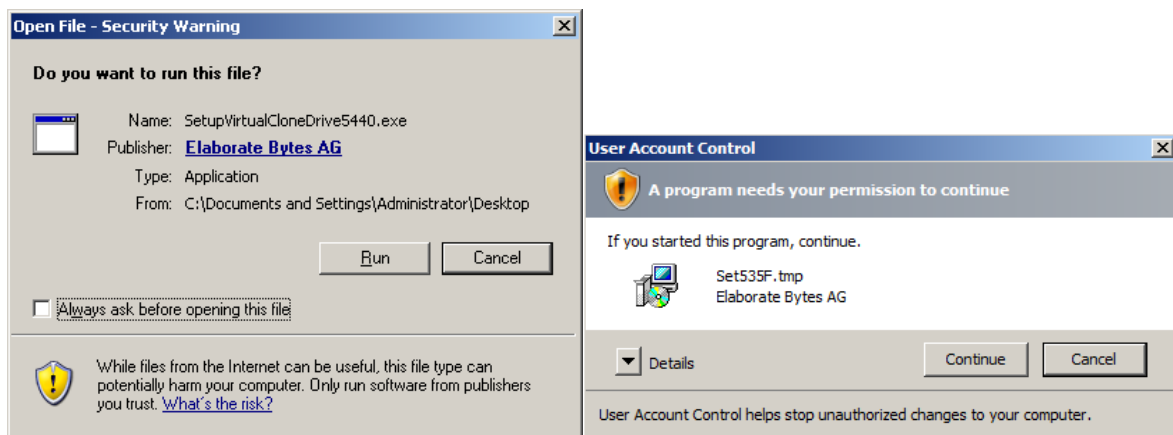
This guide is for users of Windows 7 (and earlier versions of Windows). Windows 8 can handle iso-images natively ([finally](#)).

Getting started

Start the installation by double-clicking *SetupVirtualCloneDrive.exe*

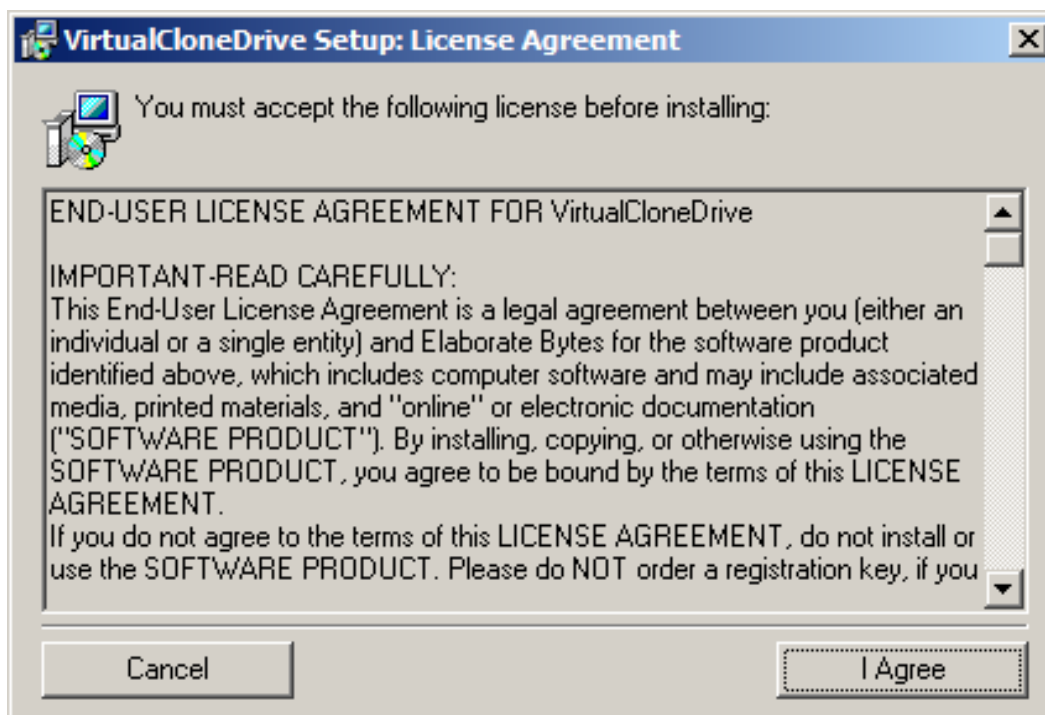
Beware

If you receive either of these warnings simply press **Continue/Run** to proceed with the installation.



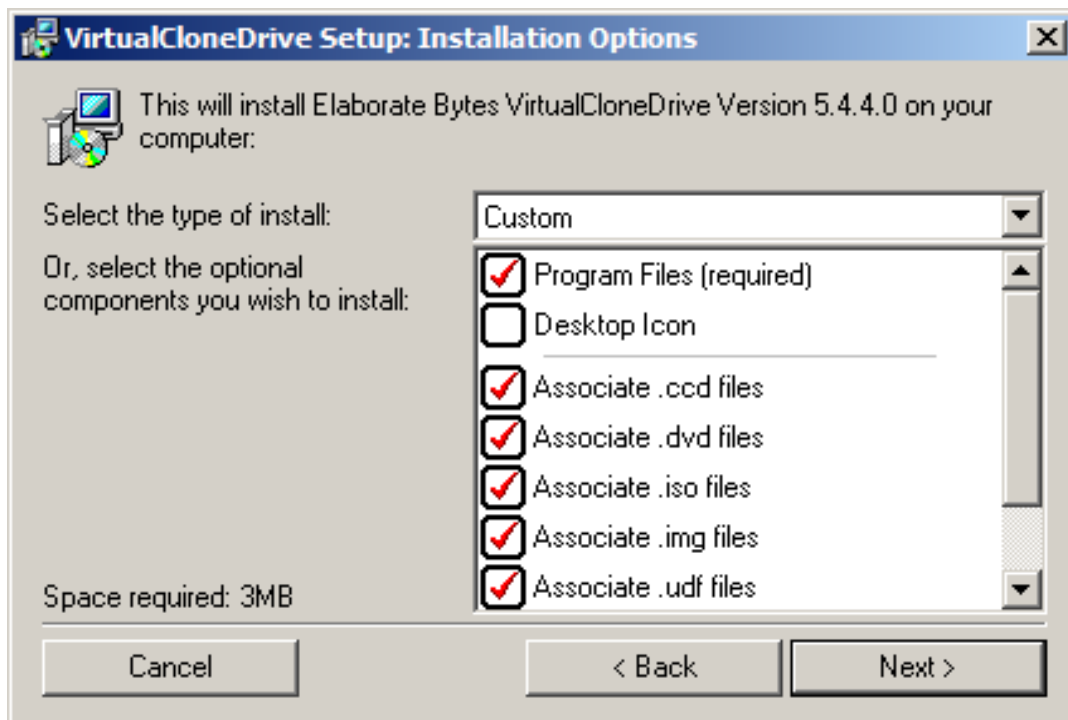
Step 1

Read the license agreement and press “**I Agree**”.



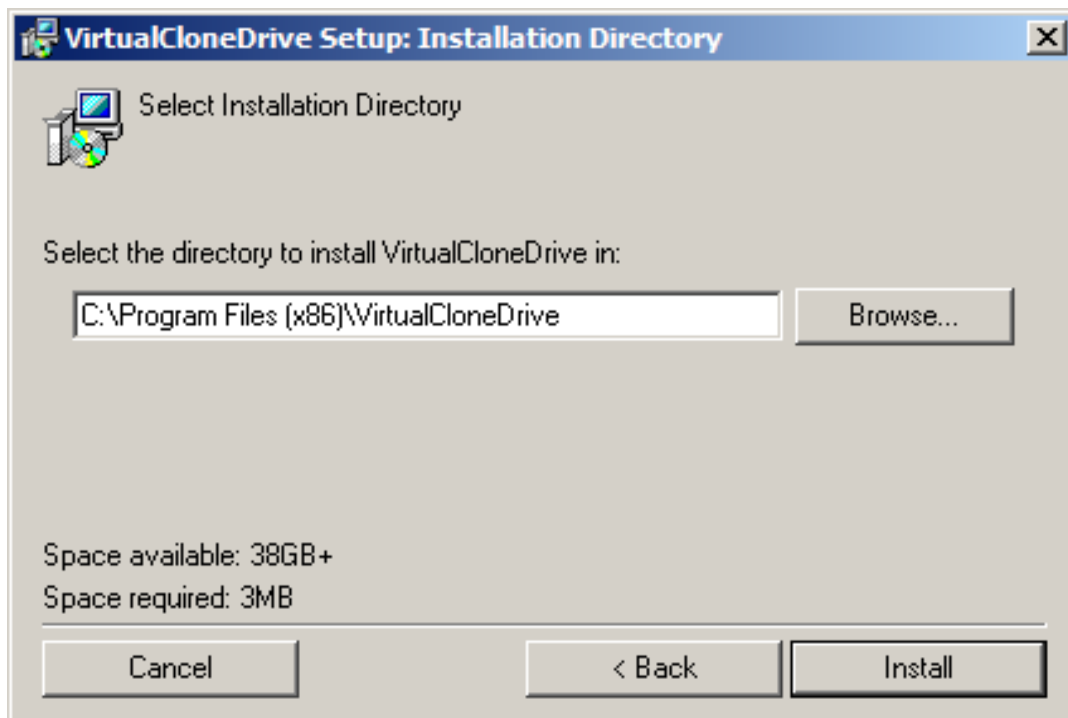
Step 2

Choose the preferred type of installation and/or press **Next**.



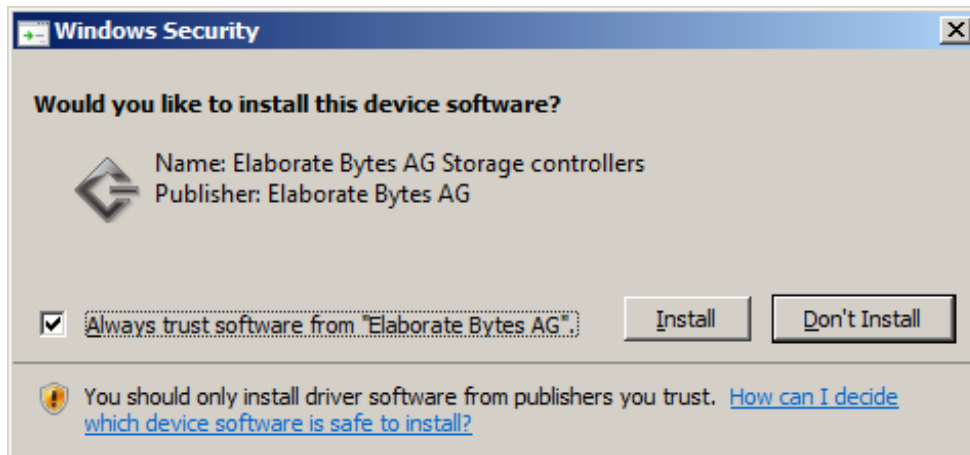
Step 3

Specify a destination for the installation and press **Next**.



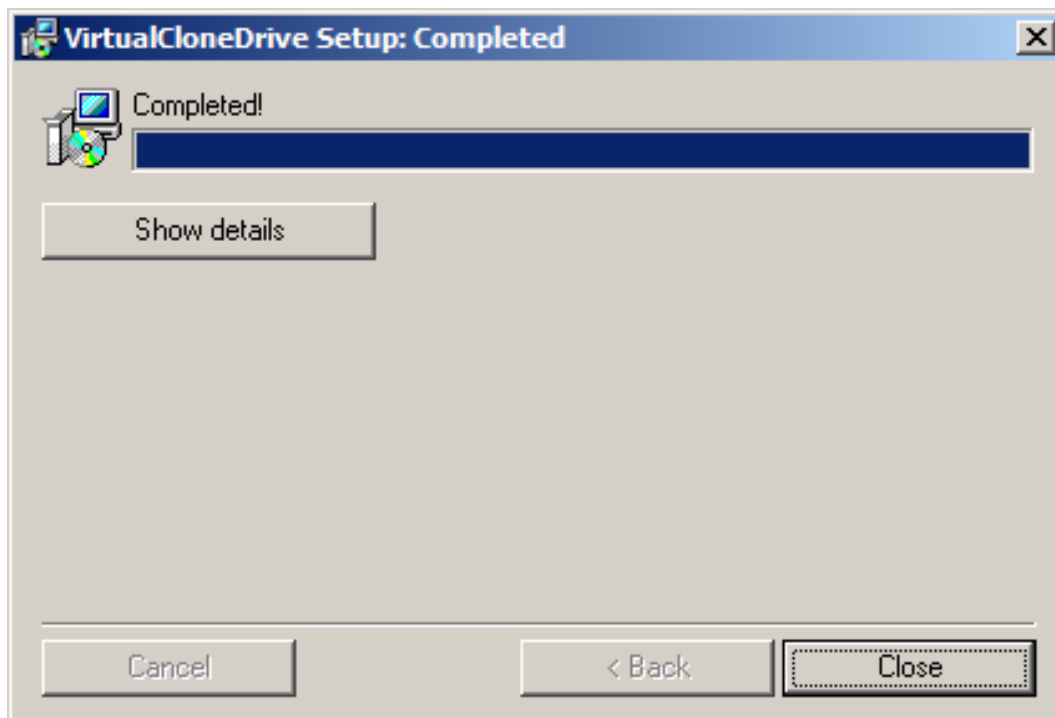
Step 4

Press **Install** to create the device.



Step 5

Press **Close** to end the installation procedure.



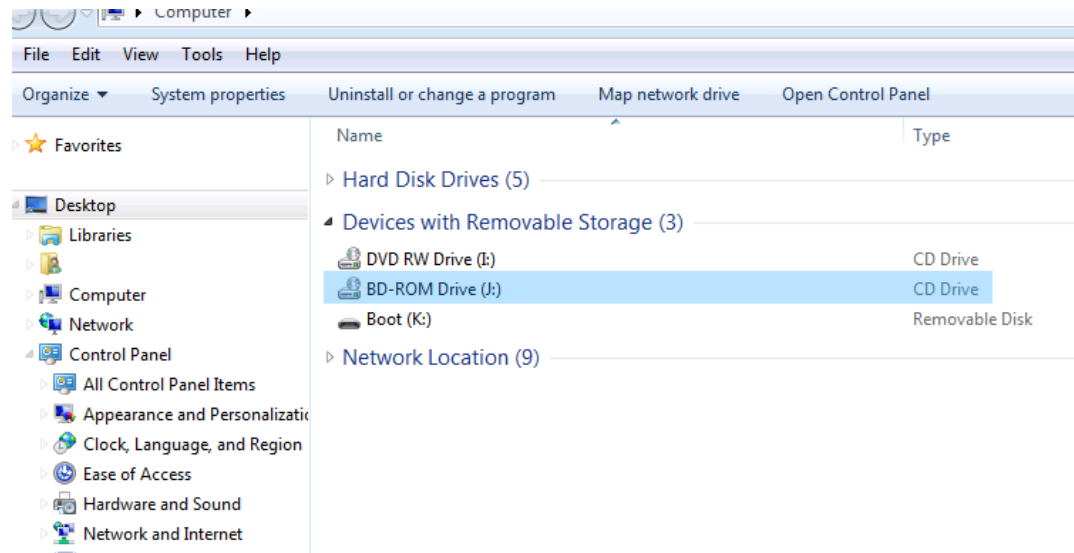
Step 6

If required, restart your computer.

Usage

The virtual drive

After installing Virtual CloneDrive, a new drive letter will appear in your file manager (“*Windows Explorer*”). The drive should be visible in the “Devices and Removable Storage” section, as “*BD-ROM Drive ([Drive Letter])*”. The *[Drive Letter]* in this example, is *J:*. To Windows, it will seem and behave as an “ordinary” CD/DVD-rom drive.



Mounting an iso-image file

To access the contents of an iso-image, right-click above it and select **Mount (Virtual CloneDrive J:)**. The *[Drive Letter]* in this example, is *J:*. This action is equivalent to inserting a disc into a CD/DVD-rom.

