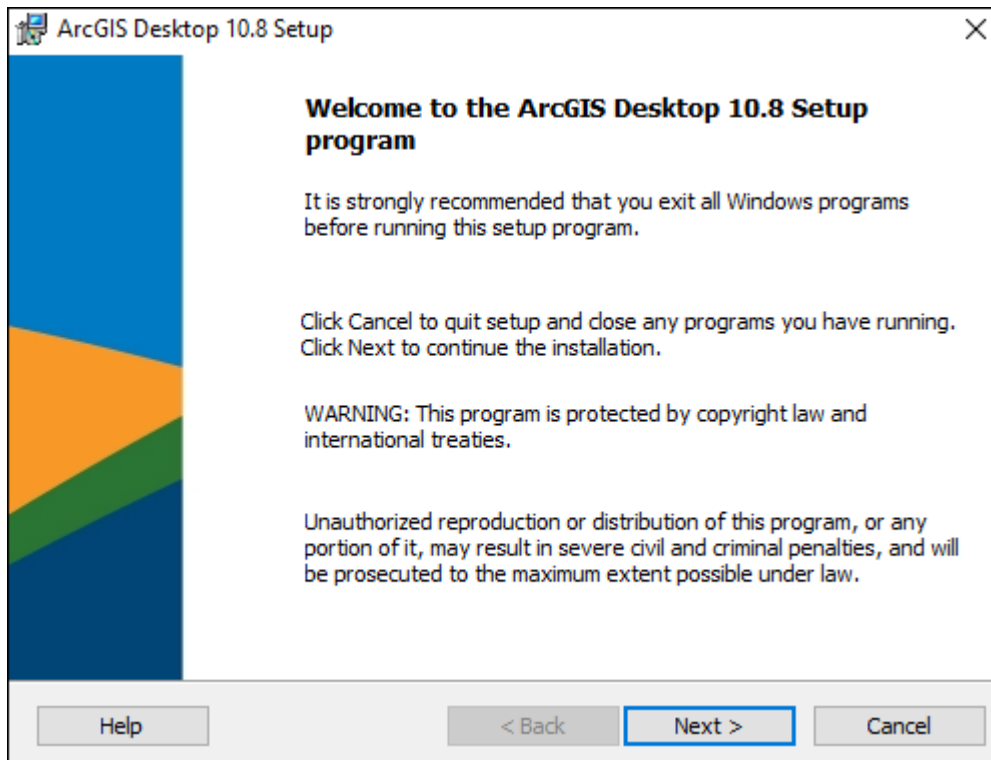


Installation guide

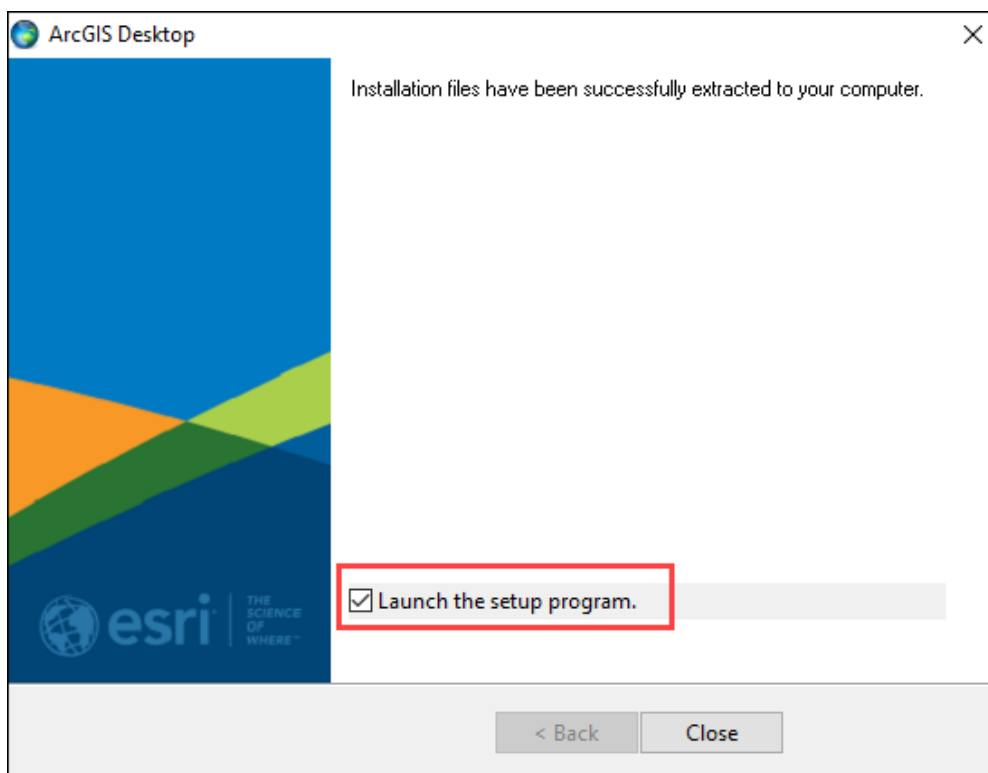
ArcGIS 10

Getting started

Go to the location of the downloaded *ArcGIS for Desktop* installer and double-click the file to start the installation procedure. When prompted, choose a destination for the **temporary** installation files.



Make sure “*Launch the setup program*” is checked before pressing **Close**.

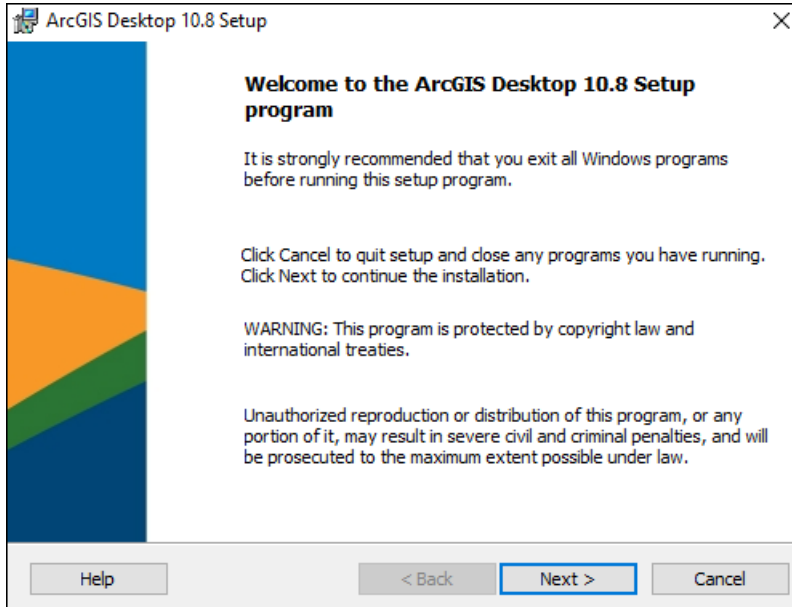


Beware

If you receive this or similar warnings, simply press **Allow/Run** to proceed with the installation.

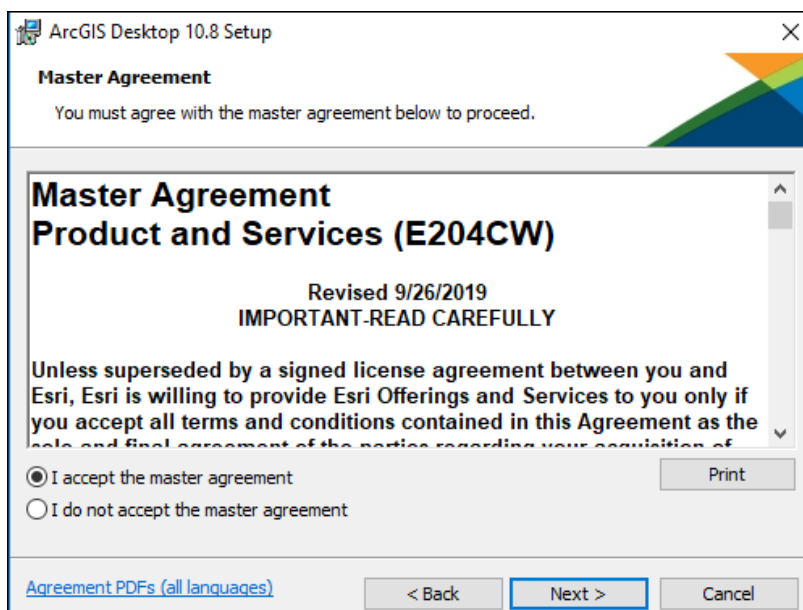
Step 1

Press **Next**.



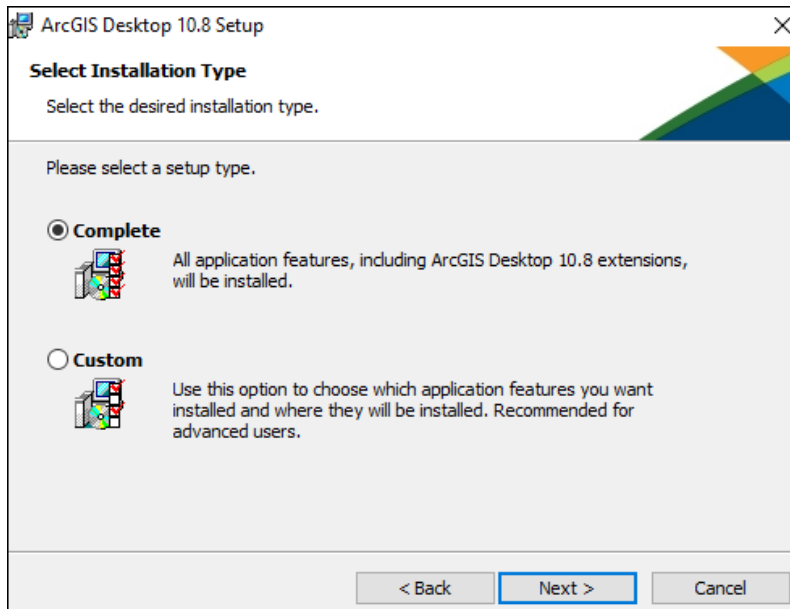
Step 2

Select *"I accept..."* and press **Next**.



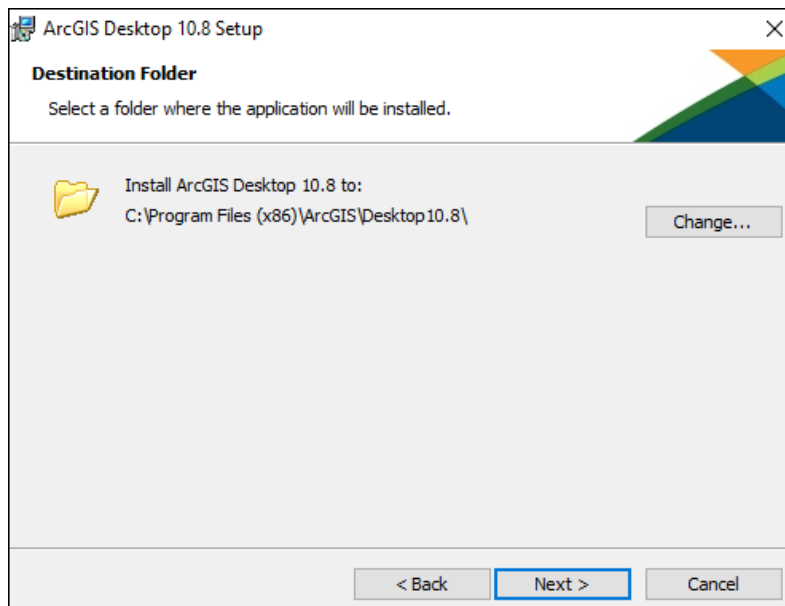
Step 3

Make your selection and press **Next**. This guide will assume “*Complete*” was selected.



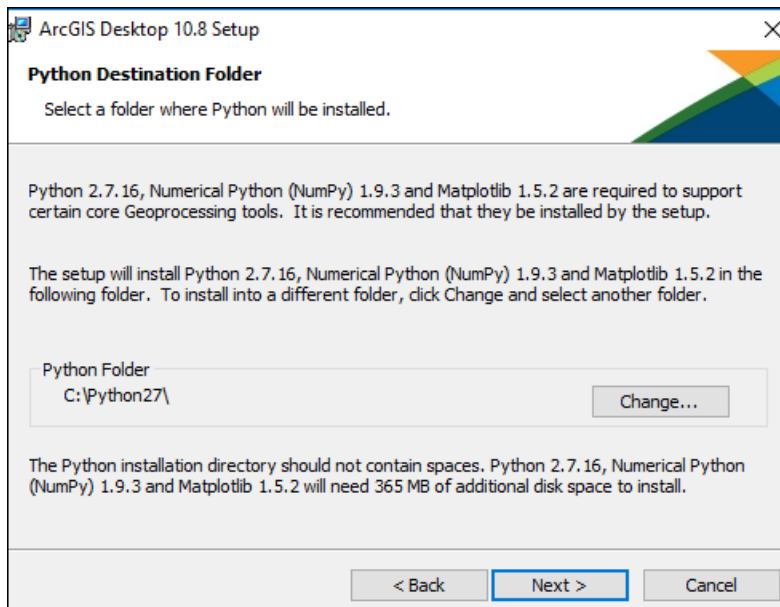
Step 4

Choose a destination folder for ArcGIS and press **Next**.



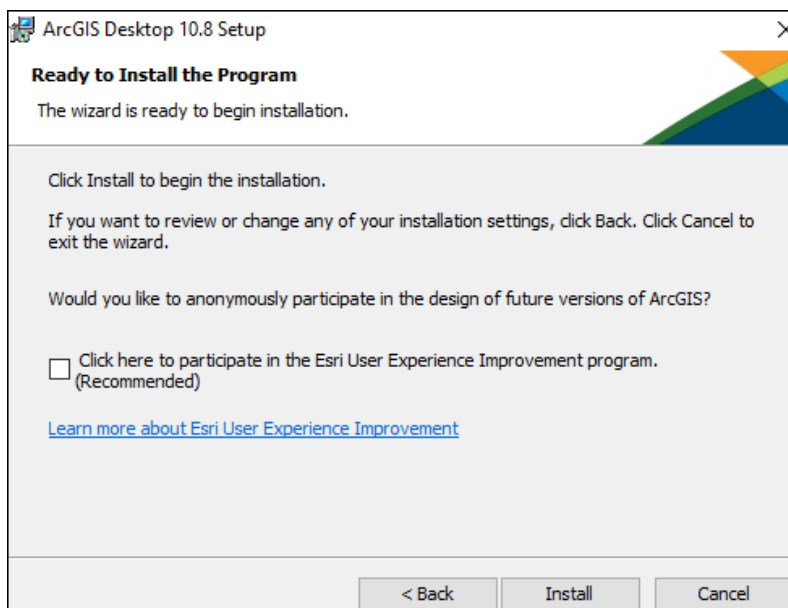
Step 5

Choose a destination folder for Python and press **Next**. To avoid errors, make certain that the Python installation path does not include any spaces.



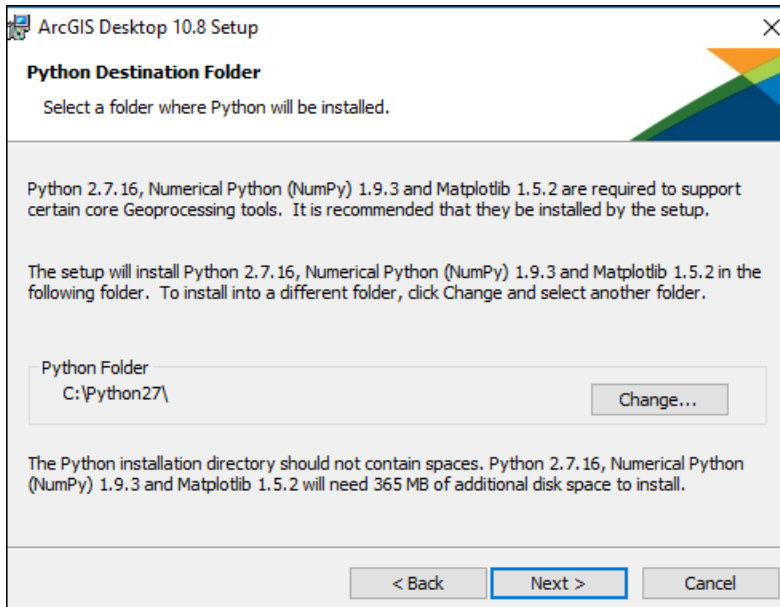
Step 6

Make your selection and press **Next**.



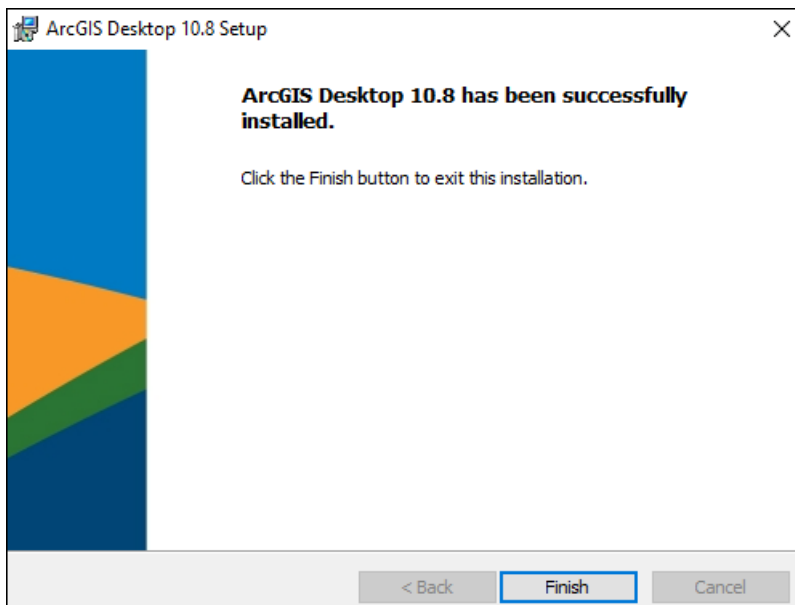
Step 7

This might take a while.



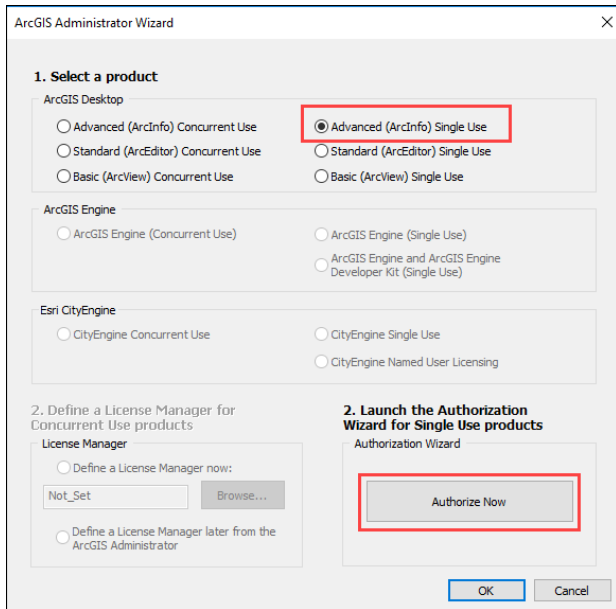
Step 8

Press **Finish** to end the installation and start the activation process.



Step 9

Select *"Advance (ArcInfo) Single Use"* and press **Authorize Now**.



The screenshot shows the "ArcGIS Administrator Wizard" dialog box. It is divided into two main sections: "1. Select a product" and "2. Launch the Authorization Wizard for Single Use products".

1. Select a product

- ArcGIS Desktop**
 - Advanced (ArcInfo) Concurrent Use
 - Advanced (ArcInfo) Single Use**
 - Standard (ArcEditor) Concurrent Use
 - Standard (ArcEditor) Single Use
 - Basic (ArcView) Concurrent Use
 - Basic (ArcView) Single Use
- ArcGIS Engine**
 - ArcGIS Engine (Concurrent Use)
 - ArcGIS Engine (Single Use)
 - ArcGIS Engine and ArcGIS Engine Developer Kit (Single Use)
- Esri CityEngine**
 - CityEngine Concurrent Use
 - CityEngine Single Use
 - CityEngine Named User Licensing

2. Define a License Manager for Concurrent Use products

License Manager

- Define a License Manager now:
 - Text field: Not_Set
 - Button: Browse...
- Define a License Manager later from the ArcGIS Administrator

2. Launch the Authorization Wizard for Single Use products

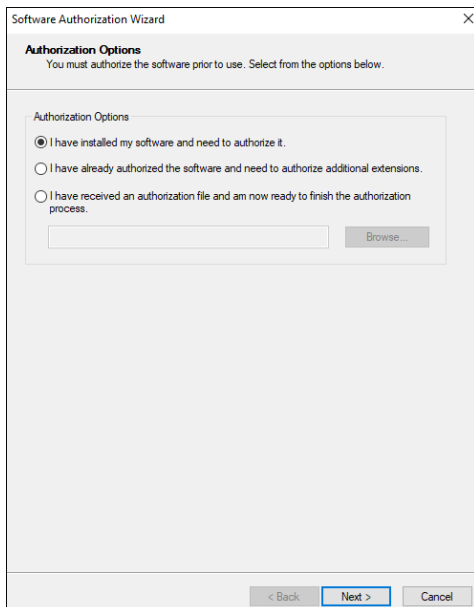
Authorization Wizard

- Button: **Authorize Now**

At the bottom of the dialog are "OK" and "Cancel" buttons.

Step 10

Select *"I have installed my software..."* and press **Next**.



The screenshot shows the "Software Authorization Wizard" dialog box. It has a title bar "Software Authorization Wizard" and a close button "X".

Authorization Options

You must authorize the software prior to use. Select from the options below.

Authorization Options

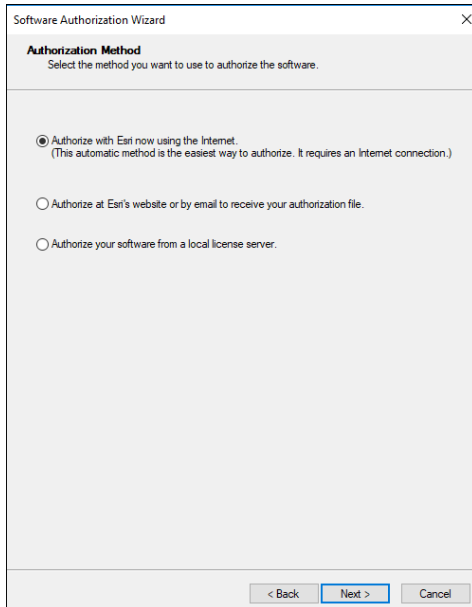
- I have installed my software and need to authorize it.**
- I have already authorized the software and need to authorize additional extensions.
- I have received an authorization file and am now ready to finish the authorization process.

Below the options is a text field and a "Browse..." button.

At the bottom of the dialog are "< Back", "Next >", and "Cancel" buttons.

Step 11

Select "Authorize with Esri now using the internet" and press **Next**.



Software Authorization Wizard

Authorization Method
Select the method you want to use to authorize the software.

Authorize with Esri now using the Internet.
(This automatic method is the easiest way to authorize. It requires an Internet connection.)

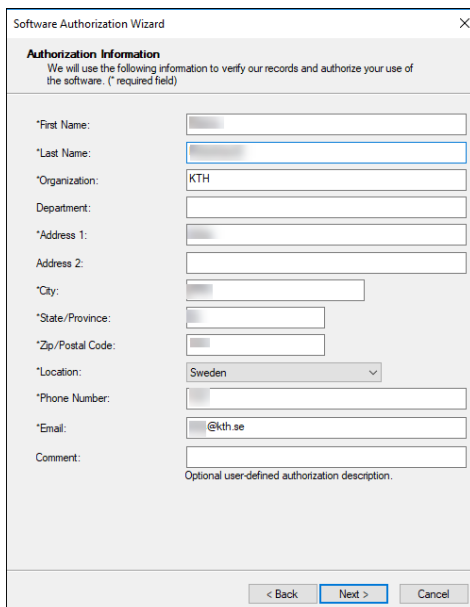
Authorize at Esri's website or by email to receive your authorization file.

Authorize your software from a local license server.

< Back Next > Cancel

Step 12

Provide the same information that was used to create the *ESRI Global Account* (with your **KTH.SE** email and **KTH as Organization**) and press **Next**.



Software Authorization Wizard

Authorization Information
We will use the following information to verify our records and authorize your use of the software. (* required field)

*First Name:

*Last Name:

*Organization:

Department:

*Address 1:

Address 2:

*City:

*State/Province:

*Zip/Postal Code:

*Location:

*Phone Number:

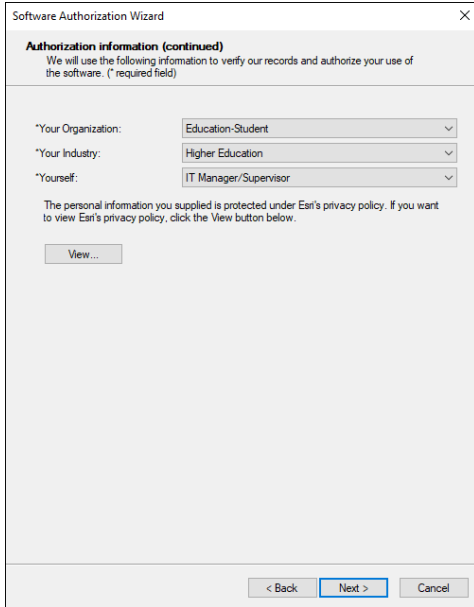
*Email:

Comment:
Optional user-defined authorization description.

< Back Next > Cancel

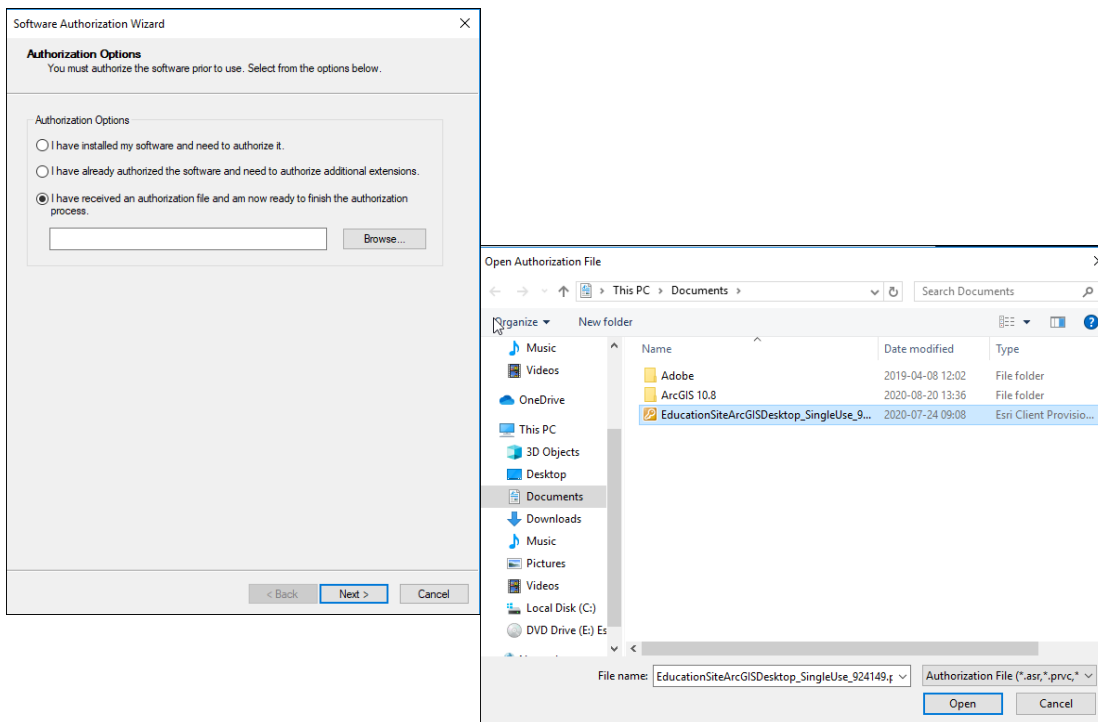
Step 13

Make your selections and press **Next**.



Step 14

Browse the license file. Press **Next** to activate your product.



Step 15

Software Authorization Wizard will start and the authorization number will appear in the box. Press **Next**.

Software Authorization Wizard

Software Authorization Number
Enter the authorization number for your software product.

The authorization number consists of three letters and a series of numbers; similar to ABC123456789.

ArcGIS Desktop Advanced (Single Use)

< Back Next > Cancel

Step 16

Make your selection and press **Next**.

Software Authorization Wizard

Authorize Software Extensions
Please select an option below.

Options

I do not want to authorize any extensions at this time.

I have authorization number(s) to authorize one or more extensions.

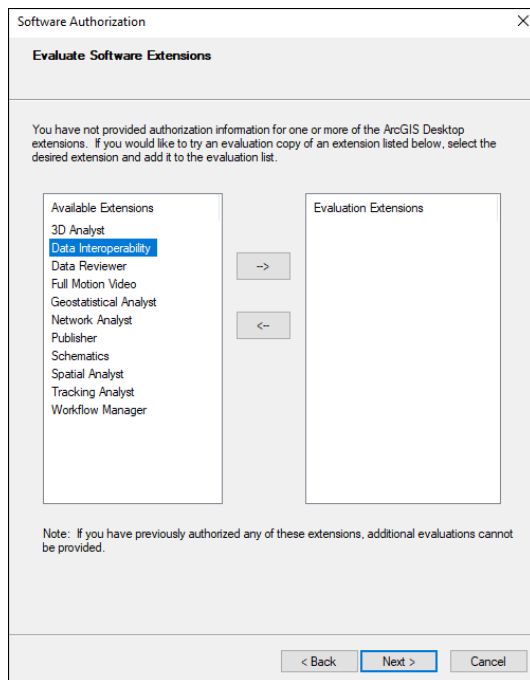
Extensions

Feature	Authorization Number
3D Analyst	
Spatial Analyst	
Network Analyst	
Publisher	
Data Interoperability	
Geostatistical Analyst	
Tracking Analyst	
Schematics	
Full Motion Video	
Workflow Manager	
Data Reviewer	
LocateXT	ESU569746690

< Back Next > Cancel

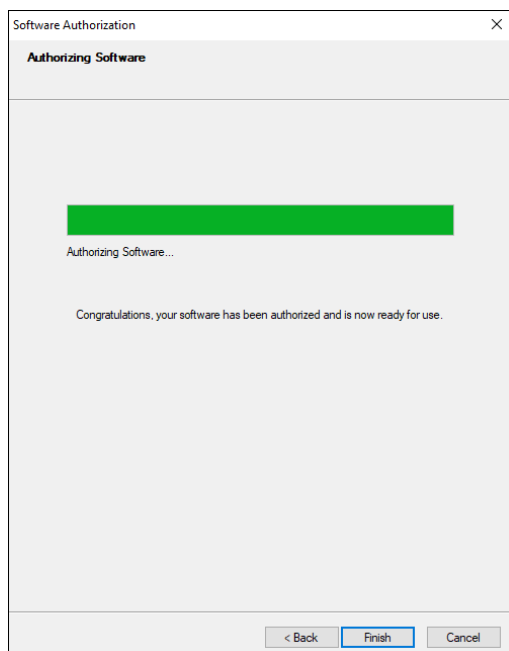
Step 17

Press **Next** to skip this step.



Step 18

Press **Finish** to end the activation process.



Step 19

Press **OK** to exit installation process.

