



Welcome to course **DT2350** **Human Perception for Information Technology**

*Roberto Bresin, Ginevra Castellano, Anna Hjalmarsson
David House, Giampiero Salvi, Christopher Peters*
KTH CSC



Copyright (c) 2014 Roberto Bresin

This work is licensed under the Creative Commons Attribution-NonCommercial-Share Alike 3.0 Unported License. To view a copy of this license, visit <http://creativecommons.org/licenses/by-nc-sa/3.0/> or send a letter to Creative Commons, 559 Nathan Abbott Way, Stanford, California 94305, USA.



DT2350 Human perception
DT2320 Human perception

Outlook

- Participants list
- Course participants: short presentation and expectations
- Short course introduction
- Course structure
- Communication in the course
- Bonus system



**Why choose
course DT2350**

Human Perception for Information Technology

Roberto Bresin
`roberto@kth.se`

KTH CSC
Sound and Music Computing



DT2350 Human perception

DT5320 Human perception

You can help
to
**understand and
improve the world,
and how
you interact with it!**

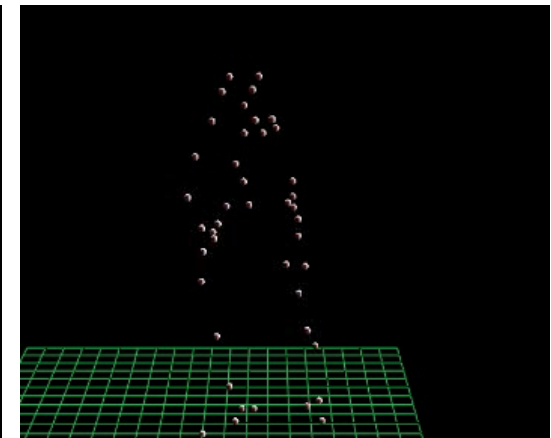
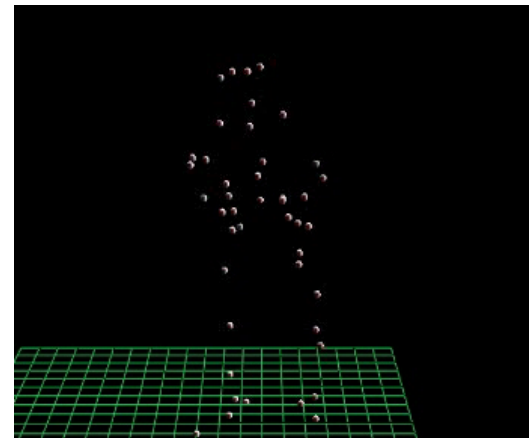
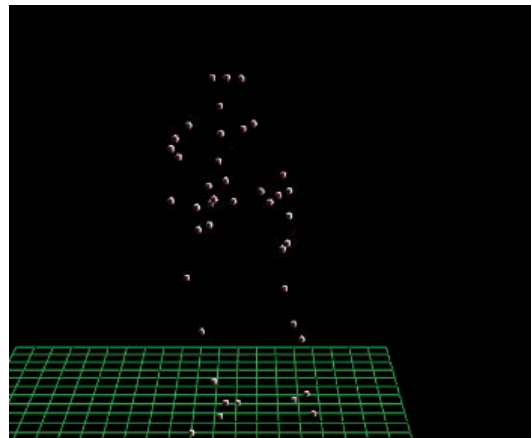
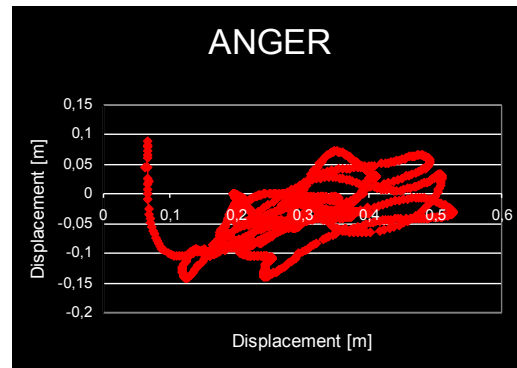


DT2350 Human perception
DT2320 Human perception

Body-gesture emotion in expressive music performance

R Bresin, K Hellmer, E Schoonderwaldt, J Beskov

Flutist playing with 12 different emotional intentions





DT2350 Human perception

DT2320 Human perception

Why choose this course

Human interaction with the environment **is based on perception**

Current technology relies on a **variety of media** to display, transmit and exchange **information**.



DT2350 Human perception

DT2350 Human perception

Key course facts

- Lecturers are experienced researchers
- 3 interesting laboratory sessions
- Examination form: project



DT2350 Human perception
DT2320 Human perception

Course responsible

Roberto Bresin

- email: roberto@kth.se
- mobile: 070 795 7876



Course structure 1/2

DT2350 Human perception
DT2320 Human perception

9 lectures

Including 1 guest lecturer (Ginevra Castellano, Uppsala)

3 laboratory sessions about perception

- Each lab corresponds to 3 lectures
- Web-based



Course structure 2/2

DT2350 Human perception
DT2320 Human perception

5 assignments at regular intervals

Examination form: project (group of 2 people with individual grading)

Bonus system: You earn 1 bonus point for each attended lecture, with a limit of 8 bonus points.



Calculation of the final grade

Assignments: 15 points each (4 assignments)

7.5 points for passing

Final project: 40 points

20 points for passing

Total points: 100

Bonus points: 8

Grade Limit

- A 96 points
- B 83 points
- C 71 points
- D 60 points
- E 50 points
- Fail below 50 points



DT2350 Human perception
DT2320 Human perception

Communication in the course

Main tool

<http://bilda.kth.se>

Course web

<https://www.kth.se/social/course/DT2350/>