



Welcome to course  
**DT2350**  
**Human Perception for  
Information Technology**

*Roberto Bresin, Ginevra Castellano, Anna Hjalmarsson  
David House, Giampiero Salvi, Christopher Peters, Emma Frid*

**KTH CSC**



Copyright (c) 2015 Roberto Bresin  
This work is licensed under the Creative Commons Attribution-NonCommercial-Share Alike 3.0 Unported License. To view a copy of this license, visit <http://creativecommons.org/licenses/by-nc-sa/3.0/> or send a letter to Creative Commons, 559 Nathan Abbott Way, Stanford, California 94305, USA.



DT2350 Human perception  
DT2320 Human perception

# Outlook

- Participants list
- Course participants: expectations
- Short course introduction
- Course structure
- Communication in the course



**Why choose  
course DT2350**

**Human Perception for  
Information Technology**

Roberto Bresin  
[roberto@kth.se](mailto:roberto@kth.se)

KTH CSC  
Sound and Music Computing



DT2350 Human perception  
DT5320 Human perception

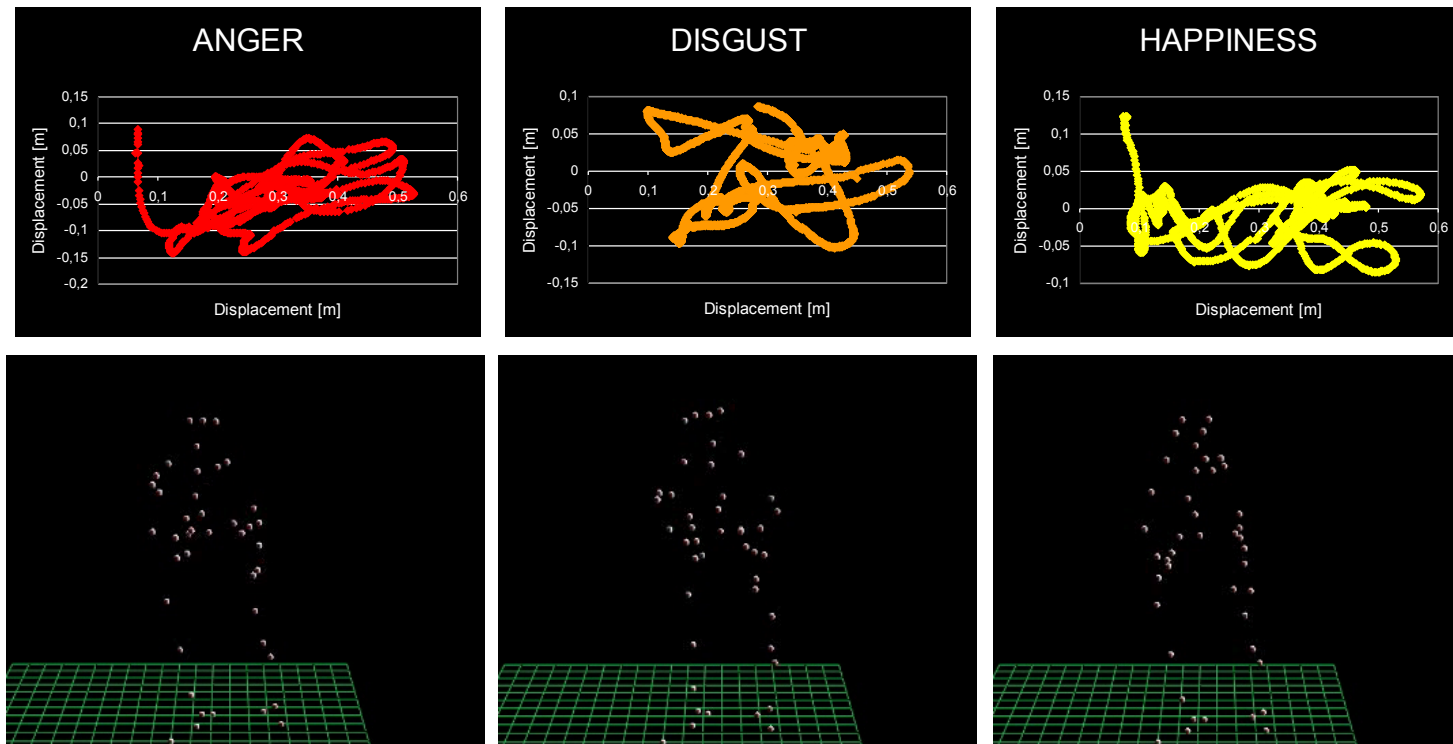
You can help  
to  
**understand and  
improve the world,  
and how  
you interact with it!**



# Body-gesture emotion in expressive music performance

R Bresin, K Hellmer, E Schoonderwaldt, J Beskov

Flutist playing with 12 different emotional intentions





DT2350 Human perception  
DT2320 Human perception

## Why choose this course

**Human interaction** with the environment  
**is based on perception**

**Current technology** relies on a **variety of media** to display, transmit and exchange **information.**



DT2350 Human perception  
DT5320 Human perception

## Key course facts

- Lecturers are experienced researchers
- 3 interesting laboratory sessions
- Examination form: project



DT2350 Human perception  
DT5320 Human perception

## **Course responsible**

Roberto Bresin

email: [roberto@kth.se](mailto:roberto@kth.se)

mobile: 070 795 7876

## **Course administrator**

Emma Frid

email: [emmafrid@kth.se](mailto:emmafrid@kth.se)

office: 08 790 6110





DT2350 Human perception  
DT2320 Human perception

## Course structure 1/2

9 lectures

Including 1 guest lecturer (Ginevra Castellano, Uppsala)

3 laboratory sessions about perception

- Each lab corresponds to 3 lectures
- Web-based



DT2350 Human perception  
DT5320 Human perception

## Course structure 2/2

4 written assignments at regular intervals

Examination form: project (group of 3-4 people with individual grading)



# Calculation of the final grade

Assignments: 20 points each (3 assignments)

10 *points for passing*

Final project: 40 points

20 *points for passing*

Total points: 100

**If an assignment is submitted after the deadline, 2 points will be subtracted from the total points obtained for this assignment.**

Grade	Limit
• A	90 points
• B	80 points
• C	70 points
• D	60 points
• E	50 points
• Fail	below 50 points



DT2350 Human perception  
DT2320 Human perception

## Communication in the course

*Course web*

<https://www.kth.se/social/course/DT2350/>



DT2350 Human perception  
DT5320 Human perception

## Important deadlines

Project draft	September 13
Paper review 1	September 20
Paper review 2	October 4
Project Poster	October 12
Final project report	October 18

See course web for more details.