

## KID / DEL Data collection & analysis

KID DH2655    DEL DH2465

**Björn Thuresson**    **Åke Walldius**    **Henrik Blomgren**  
[thure@kth.se](mailto:thure@kth.se)    [aakew@kth.se](mailto:aakew@kth.se)    [henrik.blomgren@indek.kth.se](mailto:henrik.blomgren@indek.kth.se)

## Schedule

2 sep	Introduction	9-12	E36
4 sep	Ethno	15-17	E32
9 sep	Presentation and reflection	9-12	VIC
11 sep	GL x 2 and DEL lecture	13-17	D41
18 sep	Stakeholders etc	13-17	V01
23 sep	Intro to project	9-12	E3
24 sep	GL in DEL	9-11	VIC
28 sep	Deliverables in both KID and DEL		

## What happens today?

- Stakeholders – who are they and how do you represent them?
- Group work & stand up
- Analysis of qualitative data
- Group work & stand up
- Format for the deliverable for the 28<sup>th</sup>
- Next time

## What is a stakeholder?

- Definition:**
  - A party that has an interest in an enterprise, project, product or service.
    - The primary stakeholders are typically investors, employees, customers and suppliers.
    - The secondary (tertiary etc) has a looser relation or lesser interest.
  - Extension: An overarching party, e.g. community, government or trade organizations.

## How to represent?

- Flow charts and relational modeling
  - Owned by...
  - Pay to.../Receives payment from...
  - Delivers to.../Receives from...
- Radial, area or hierarchical visual organization
- ...

## Relational modeling

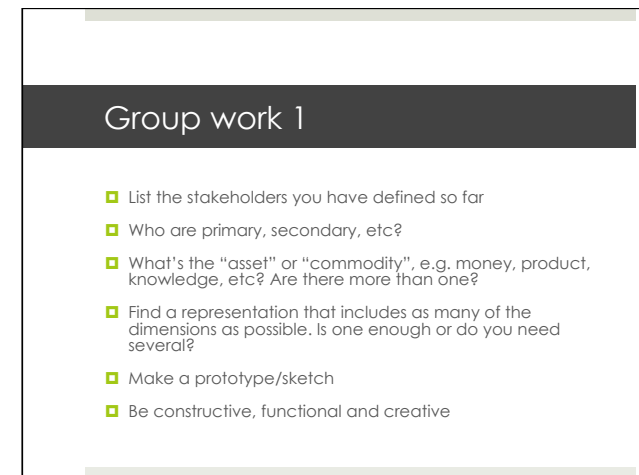
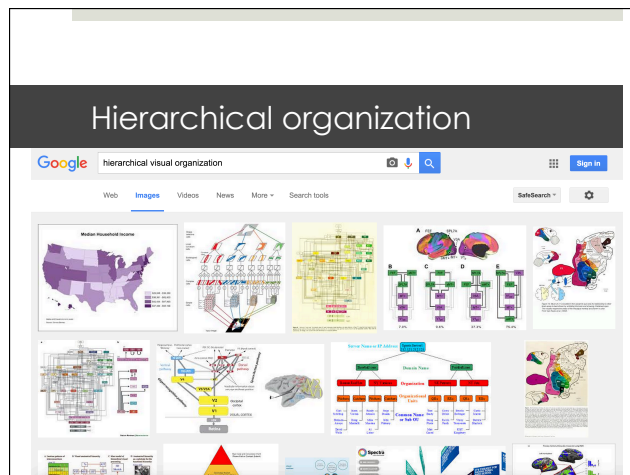
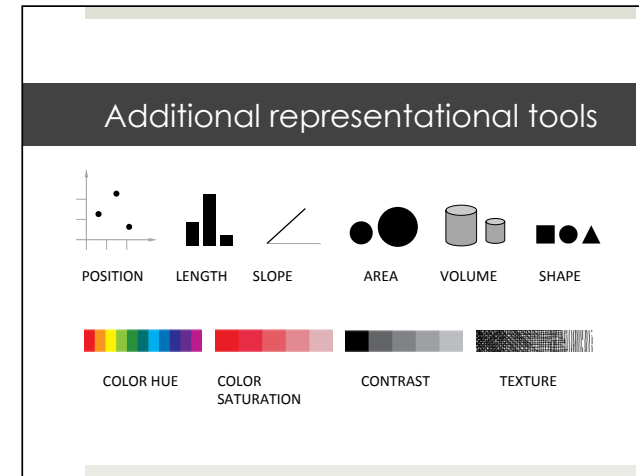
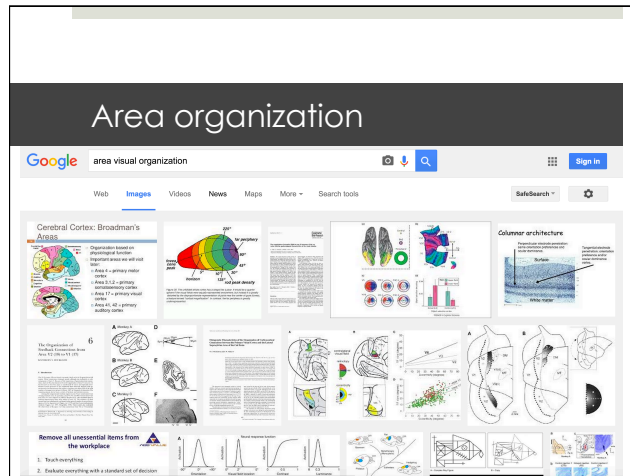
Google search results for 'relational modeling'. The top result is a diagram titled 'Relational Model' showing a table with columns 'Name' and 'Age'. The table contains rows for 'John', 'Mary', 'John', 'Mary', 'John', 'Mary'. Below the table is a diagram showing a hierarchy of 'EMPLOYEE' and 'HOURLY' tables. The 'EMPLOYEE' table has columns 'Name', 'Salary', and 'Department'. The 'HOURLY' table has columns 'Name', 'Rate', and 'Hours'. The 'EMPLOYEE' table is linked to the 'HOURLY' table via a 'Relation' table.

## Flow charts

Google search results for 'flow charts'. The top result is a diagram titled 'Flow Charts' showing a flowchart with boxes and arrows. Below the flowchart is a diagram showing a hierarchy of 'Flow Charts' and 'Flow Charts'.

## Radial organization

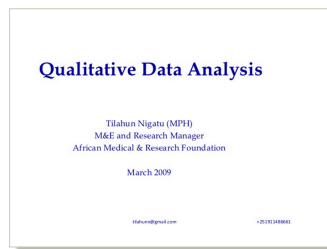
Google search results for 'radial visual organization'. The top result is a diagram titled 'Radial Visual Organization' showing a radial diagram with concentric circles and radial lines. Below the diagram is a diagram showing a hierarchy of 'Radial Visual Organization' and 'Radial Visual Organization'.



## Presentation 1

- Group 5 ->1
- Ca 5 mins
- Lots of visuals
- Informal/tentative

## Qualitative analysis



- <http://www.slideshare.net/tilahunigatu/qualitative-data-analysis-11895136>

## Group work 2

- What have you collected so far (qualitative/quantitative)?
- Which analysis method have/will you use?
- Motivate
- Have you enough information or do you need to do additional data collection?

## Presentation 2

- Group 1-5
- Ca 5 mins
- Convincing motivations
- Informal/tentative



## Deliverable 1 for KID

- Due Sep 28 at 16.00
- Group deliverable
- Scientific report describing:
  - The domain
  - Stake holders
  - Organisational structures
  - Incitements and drivers
  - Restrictions and limitations
- Approx. 3-5000 words, 10 pages

## Template ToC (1/2)

- *Cover*
- *Abstract & executive summary*
- *ToC*
- *Definitions, image index*
- 1. Introduction; what's it about?
- 2. Problem statement and delimitations

## Template ToC (2/2)

- 3. Background and previous research
- 4. Description of the study and the results
- 5. Discussion – what does it mean?
- 6. Conclusions
- *References*
- *Appendices*

## Next time

- Wednesday Sep 23
- 9-12 in E3
- Intro to project