

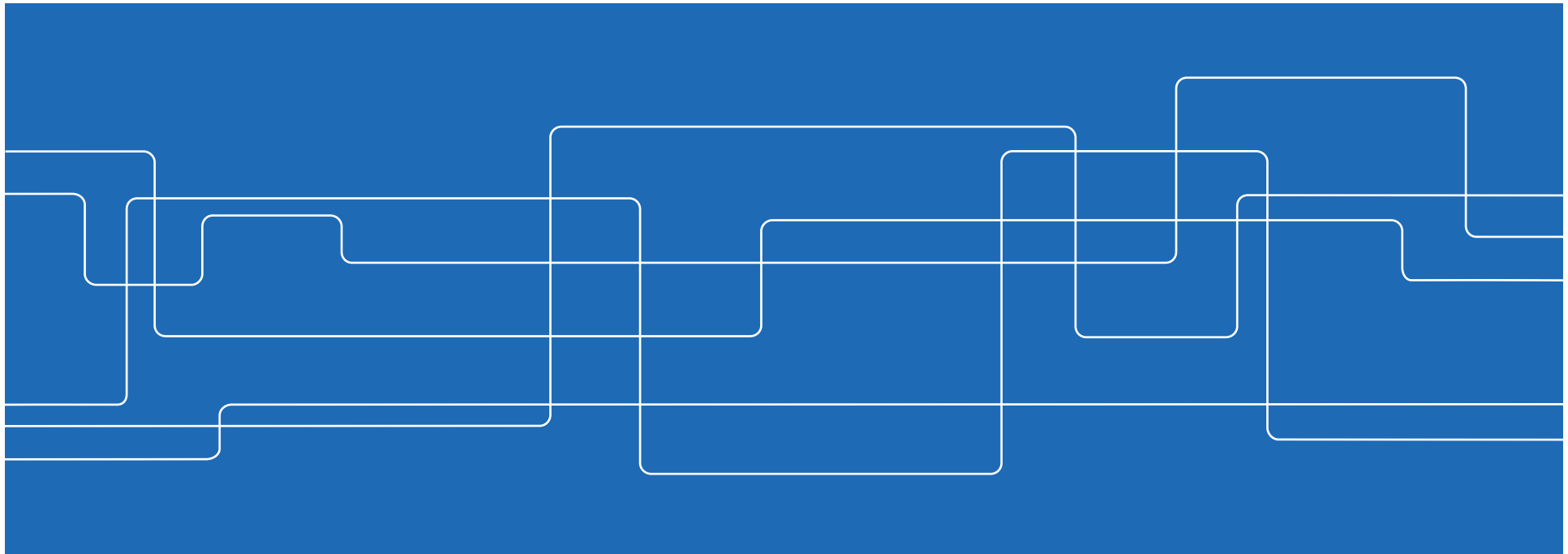


# **Systems, Control and Robotics**

## **EL2222**

2016-08-25

Patric Jensfelt





## EL2222

SCR13 thought that there was not enough

- Hands on lab activities with real hardware
- Programming

EL2222 was the result of this. Given first time 2014

Setup:

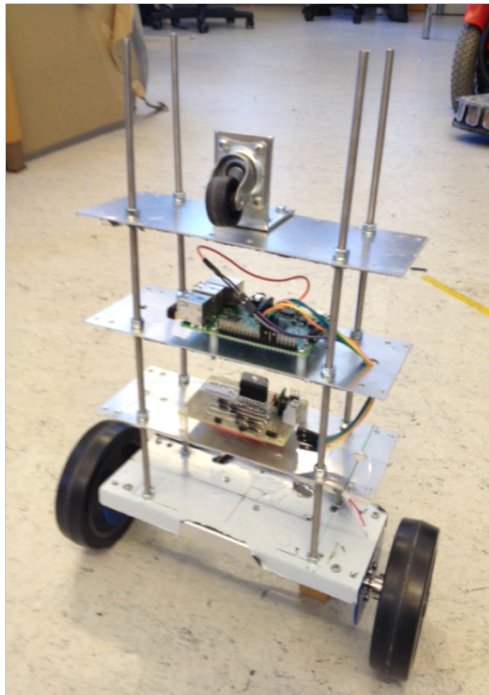
“Guided” work

Small project in pairs or individually

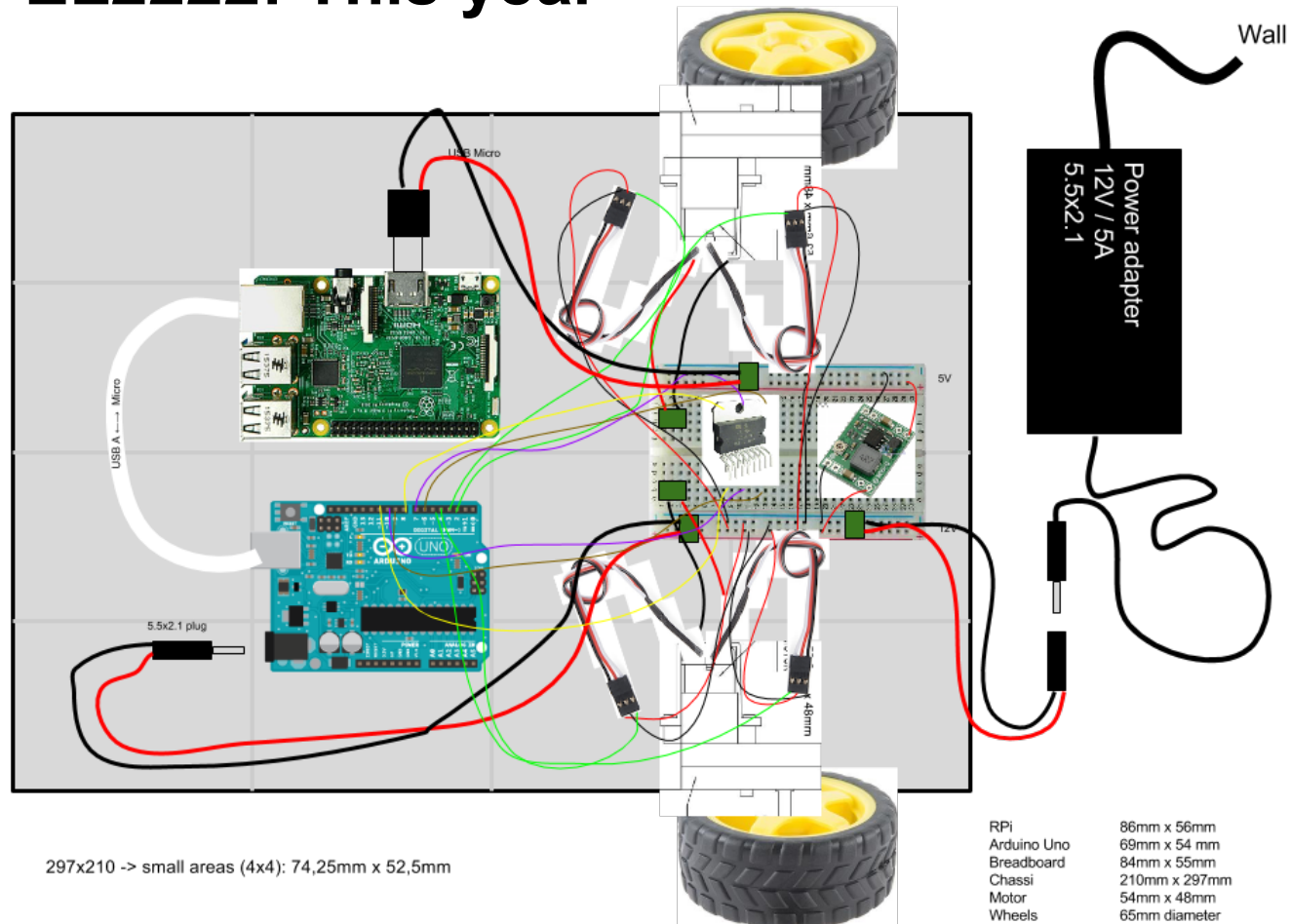


## EL2222: Last year

Learn the basic of the involved components  
Make the segway balance



## EL2222: This year





## EL2222: This year

- 4h workshop in period 1 to get you started on motion control and programming Arduino
  - Work in pairs
- 4h workshop in period 2 introducing Raspberry Pi
  - Work in pairs
- 4h seminar
- Project



## **EL2222: What you do**

Active participation in lab sessions

Small project where you do something on your own with the hardware



## EL2222: Goals

You will get exposed to:

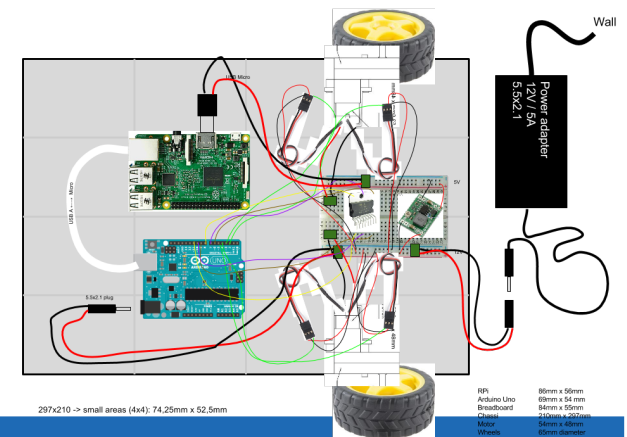
- Programming
- Linux / embedded
- Electronics

So that the barrier for you to apply your theory is lower and that you will get inspired to learn more

## EL2222: We provide a goodie bag

Each pairs gets a

- Arduino
- Raspberry Pi
- Motors, wheels, encoders
- Power supply
- Some simple electronics to work with
- ...







## EL2222: Interested

Exclusive for SCR

Want to take it? I need to know 31/8 using this doodle

<http://doodle.com/poll/bucfc78ywqu2535t>

What did students last year think?

<https://kth.box.com/s/s4zo848k7iszbilana56vaqw3gqr3kyb>

