



Welcome to course  
**DT2350**  
**Human Perception for  
Information Technology**

*Roberto Bresin, Ginevra Castellano, Pawel Herman, David House,  
Jarmo Laaksolahti, Giampiero Salvi, Christopher Peters, Emma Frid*

**KTH CSC**



Copyright (c) 2016 Roberto Bresin  
This work is licensed under the Creative Commons Attribution-NonCommercial-Share Alike 3.0 Unported License. To view a copy of this license, visit <http://creativecommons.org/licenses/by-nc-sa/3.0/> or send a letter to Creative Commons, 559 Nathan Abbott Way, Stanford, California 94305, USA.



DT2350 Human perception  
DT5320 Human perception

# Outlook

- About 127 expected participants
- Course participants: expectations (5 minutes)
- Registration
- Short course introduction
- Course structure
- Communication in the course



**Why choose  
course DT2350**

**Human Perception for  
Information Technology**

Roberto Bresin  
`roberto@kth.se`

KTH CSC  
Sound and Music Computing



DT2350 Human perception  
DT5320 Human perception

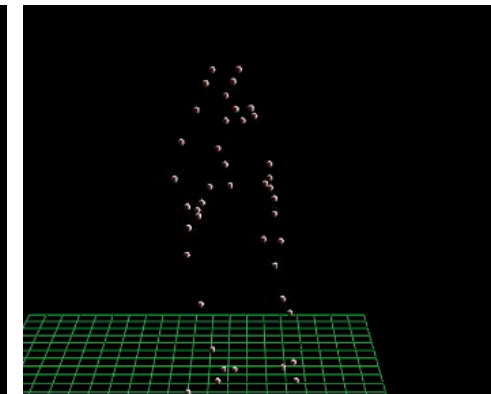
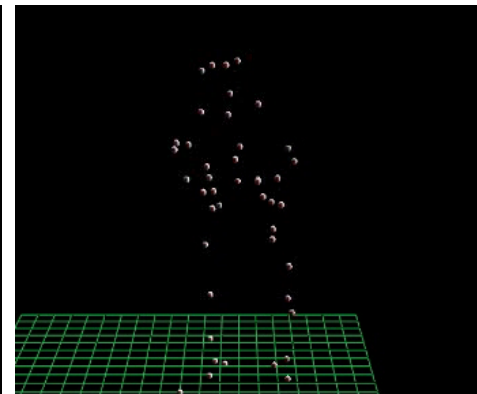
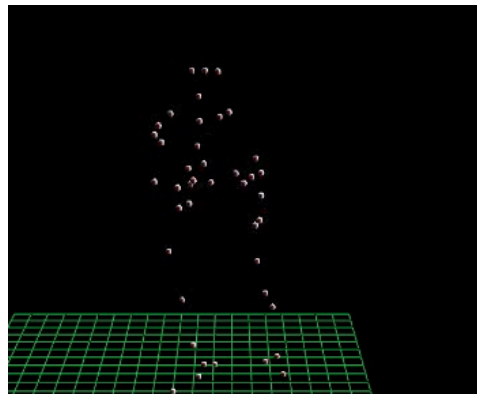
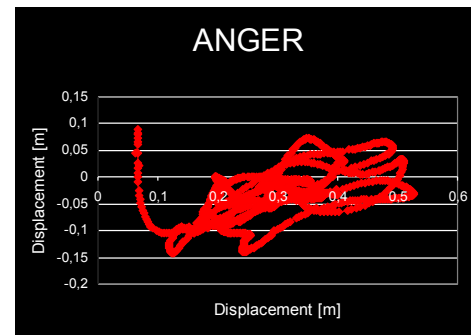
You can help  
to  
**understand and  
improve the world,**  
and how  
**you interact with it!**



# Body-gesture emotion in expressive music performance

R Bresin, K Hellmer, E Schoonderwaldt, J Beskov

Flutist playing with 12 different emotional intentions





DT2350 Human perception  
DT2320 Human perception

## Why choose this course

**Human interaction** with the environment  
**is based on perception**

**Current technology** relies on a **variety of media** to display, transmit and exchange **information.**



DT2350 Human perception  
DT5320 Human perception

## Key course facts

- Lecturers are experienced researchers
- 3 interesting laboratory sessions
- Examination form: project



DT2350 Human perception  
DT5320 Human perception

## **Course responsible**

Roberto Bresin

email: [roberto@kth.se](mailto:roberto@kth.se)

mobile: 070 795 7876

## **Course administrator**

Jarmo Laaksolahti

email: [jarmola@kth.se](mailto:jarmola@kth.se)





DT2350 Human perception  
DT2320 Human perception

## Course structure 1/2

9 lectures

Including 1 guest lecturer (Ginevra Castellano, Uppsala)

3 laboratory sessions about perception

- Each lab corresponds to 3 lectures
- Web-based



DT2350 Human perception  
DT5320 Human perception

## Course structure 2/2

4 written assignments at regular intervals

Examination form: Project (group of 3-4 people with individual grading)



# Calculation of the final grade

## 4 assignments

1. Project draft1: 20 points (10 points for passing)
2. Paper review: P/F
3. Paper review: 40 points (20 points for passing)
4. Final project: 40 points (20 points for passing)

Total points: 100

**If an assignment is submitted after the deadline, 2 points will be subtracted from the total points obtained for this assignment.**

Grade	Limit
• A	90 points
• B	80 points
• C	70 points
• D	60 points
• E	50 points
• Fail	below 50 points



DT2350 Human perception  
DT2320 Human perception

## Communication in the course

*Course web*

<https://www.kth.se/social/course/DT2350/>



DT2350 Human perception  
DT5320 Human perception

## Important deadlines

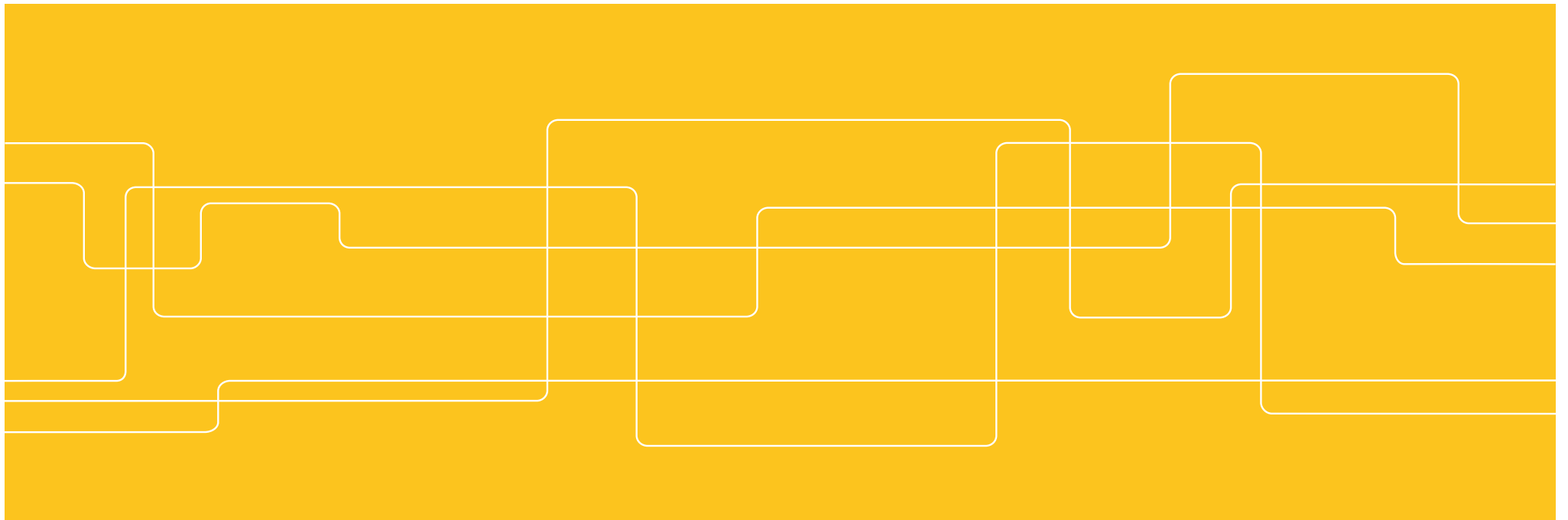
Project draft	September 18
Paper review 1	September 18
Paper review 2	October 2
Project Poster	October 6
Final project report	October 16

See course web for more details.



# Welcome to the programme!

TIMTM





**Introduction to the programme and first track introduction tomorrow 10-12 in B2**



v 35	Måndag 29/8	Tisdag 30/8	Onsdag 31/8	Torsdag 1/9	Fredag 2/9	Lördag 3/9	Söndag 4/9
8			08:00 Föreläsning DM2711 Helklass				
9			DM2711 V2				
10	10:00 Föreläsning DM2700	10:00 Föreläsning DM2700 Helklass			10:00 Föreläsning DM2700 Helklass		
11	DT2350 D2	DM2700 B2			DM2700 B3		
12							
13	13:00 Föreläsning DM2711 Helklass						
14	DM2711 K1						
15							
16							
17							

v 36	Måndag 5/9	Tisdag 6/9	Onsdag 7/9	Torsdag 8/9	Fredag 9/9	Lördag 10/9	Söndag 11/9
8			08:00 Föreläsning DM2711 Helklass				
9			DM2711 D2				
10	10:00 Föreläsning DM2700	10:00 Föreläsning DM2700 Helklass			10:00 Föreläsning DM2700 Helklass		
11	DT2350 V2	DM2700 B3			DM2700 L1		
12							
13	13:00 Föreläsning DM2711 Helklass						
14	DM2711 B2						
15			15:00 Föreläsning DM2700				
16			DT2350 D2				
17							

DM2700-1 (HT16), Introduktid
  DM2711-1 (HT16), Forskning
  DT2350-2 (HT16), Männslig p
  Information
  Avbokning