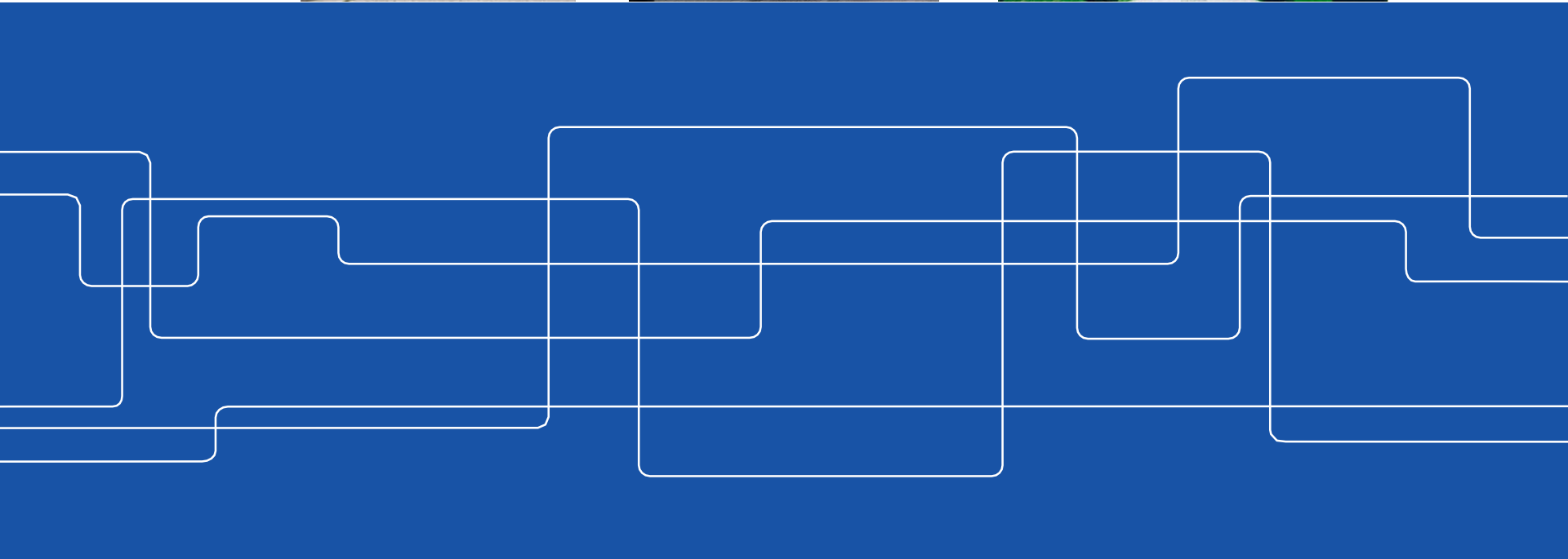




# Welcome to the School of Electrical Engineering and Computer Science (EECS)





## Agenda

10:00 – 10:15	Welcome to EECS School by Markus Hidell, Deputy Director of First and Second Cycle Education
10:15 – 11:15	Practical information concerning your studies
11:15 – 11:30	Information from the Student Chapters
Afternoon	Specific Programme information with the Programme Director

# School of Electrical Engineering and Computer Science

Markus Hidell, Deputy Director of First and Second Cycle Education





The school conducts research and education within in electrical engineering, computer science, and information and communication technology.

#### Location

- KTH Campus
- KTH Kista



# School of Electrical Engineering and Computer Science (EECS)

The subject has roots at KTH dating back to 1901

A merge 2018 between:

- Electrical Engineering
- Communication and Computer Science
- Information and Communication Technology

Ranking (QS and THE)

- Top 20 in Electrical Engineering (5 in Europe)
- Top 50 in Computer Science (Top 15 in Europe)



## EECS in numbers

[www.kth.se/eecs](http://www.kth.se/eecs)

Around 4400  
students

26 education  
programmes

Around 450 PhD  
students

4 doctoral programmes

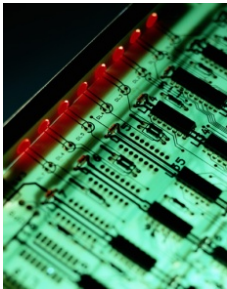
Around 200 faculty  
members





## EECS education areas

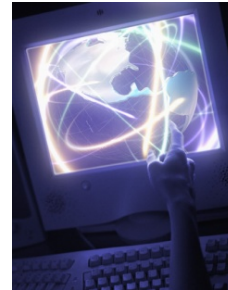
Electrical Engineering



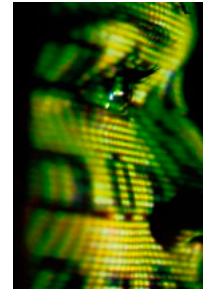
Intelligent Systems



Computer Science

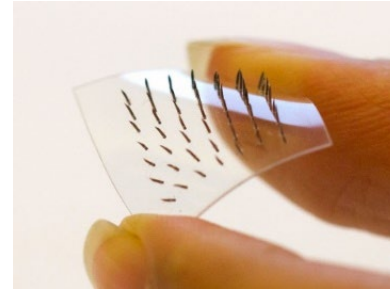


Human Centered Technology



## EECS research for a sustainable world

Contributing to sustainable development through innovations, new technology and dissemination of knowledge.





## Research in electrical engineering and computer science

Internationally prominent research in several areas:

Energy systems

Systems engineering

Electronics

Communication systems

Computer science

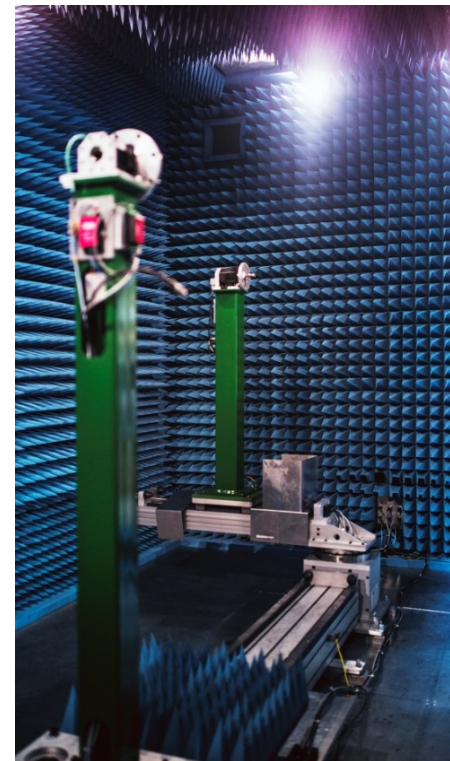
Software development

Human-computer interaction

Using theoretical and multidisciplinary approaches



## Research environments





**Thanks for your  
attention!**







## **Master's Programme Coordinator**

**Lina Lehn:**

**TIMTM Interactive Media Technology**

**TMMTM Media Management**

Please contact: [media-master@eecs.kth.se](mailto:media-master@eecs.kth.se)



**TIVNM ICT Innovation/EIT Digital**

**only tracks HCID/HCIN & VCCO/VCCN**

Please contact: [ictinnovation-master@eecs.kth.se](mailto:ictinnovation-master@eecs.kth.se)

**TIETM EIT InnoEnergy – only track Smart Cities**

Please contact: [llehn@kth.se](mailto:llehn@kth.se)

Office: Lindstedtsvägen 3, floor 4. Main Campus.





# Master's Programme Coordinator

- Nina Werner - School's Office of Student Affairs
- Elektrum: Kistagången 16 (or Isafjordsgatan 26), floor 3, Elevator B, Kista
- Available by appointment. Send an e-mail to: [ens-master@eecs.kth.se](mailto:ens-master@eecs.kth.se)
- Responsible for the following programmes:
  - Embedded Systems
  - Nanotechnology
  - Software Engineering of Distributed Systems





# Master's Programme Coordinator



- May-Britt Eklund-Larsson - School's Office of Student Affairs
- Elektrum: Kistagången 16 (or Isafjordsgatan 26), floor 3, Elevator B, Kista
- Available by appointment or send an e-mail to:
- [ictinnovation-master@eecs.kth.se](mailto:ictinnovation-master@eecs.kth.se) (TIVNM ICT Innovation/EIT Digital)
- [com.secclo-master@eecs.kth.se](mailto:com.secclo-master@eecs.kth.se) (TCOMM/SECCLLO)
- **Responsible for the following programmes:**
- Communication Systems TCOMM
- Security and Cloud Computing SECCLLO/TCOMM – SMK-track
- EIT Digital – ICT Innovation TIVNM (Year 1&2)
- ICT Innovation TIVNM (2 years at KTH)



## **Master's Programme Coordinator**

**Johanna Pirttikoski:**

**TCSCM Computer Science**  
**TMAIM Machine Learning**

Please contact: [cs-master@kth.se](mailto:cs-master@kth.se)



Office: Lindstedtsvägen 3, floor 4. Main Campus.



## Master's programme coordinator

**Sofia Norlander:**

**TEFRM Electromagnetics, Fusion and Space Engineering**

**TELPM Electric Power Engineering**

**TSCRM Systems, Control and Robotics**

**TINNM Information and Network Engineering**



Please contact: [ee-master@kth.se](mailto:ee-master@kth.se)

Substitute for  
**Cristina Janland La Verde**  
**(Leave of absence)**



Office: Lindstedtsvägen 3, floor 4. Main Campus.





## Master's programme coordinator

**Sofi Fjellvind:**

**TIETM EIT InnoEnergy tracks:**

**Nuclear Energy**

**Renewable Energy**

**Smart Electrical Networks and System**

Please contact: [ee-master@kth.se](mailto:ee-master@kth.se)

Substitute for  
**Cristina Janland La Verde**  
**(Leave of absence)**

Office: Lindstedtsvägen 3, floor 4. Main Campus.





## **As programme coordinators we can assist you with:**

- Course admission
- Visa extension and other kinds of certificates
- Official transcripts
- Study planning
- Master's thesis application and info
- Degree application and transfer of credits
- Other administrative, practical issues



# Student support and services

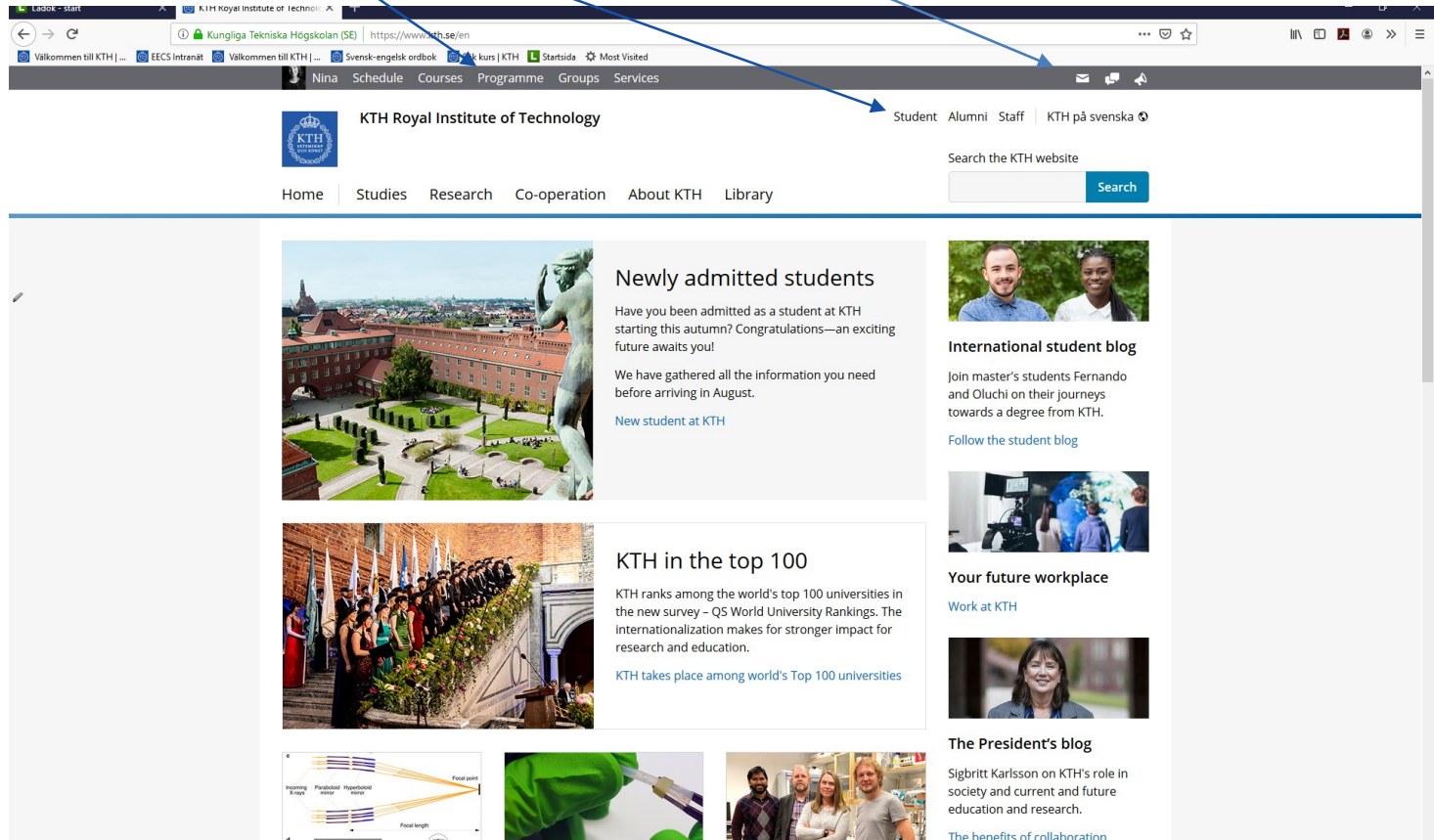
## Student service support:

For help with registrations, re-registrations, results, exams and much more, follow instructions given here [www.kth.se/en/eecs/studentsupport](http://www.kth.se/en/eecs/studentsupport)



# KTH Web Structure

- Personal Menu – log in
- Student web
- Programme web







# KTH main page and Personal menu

News feed – News from your courses and more

Fill in your temporary postal address and your KTH email address

Do not forward e-mail if you have a hotmail or livemail – it doesn't work



# Personal menu - Services

Ladok – student registry system

Create transcripts, certificates and find your T-number (Civic Registration Number)

**My services**

**Manage my studies**

- Study results
  - [Result of completed courses](#)
  - [Course result](#)  
via Current education
- Participation in education
  - [Registration](#)  
via Current education
  - [Non-completion \(studieavbrott\) and cancellation](#)  
via Current education
- Examination
  - [Exam registration](#)  
via Current education
- Certificates
  - [Written exams](#)
  - [Transcripts](#)
  - [Degree Certificate](#)
  - [Cases](#)

**Other selected services**

- [Administrera din telefonanknytning och röstbrevlåda](#) (Office web)
- [Antagningsdata](#) (NyA webben)
- [Diariet](#) (W3D3)
- [Documentation wiki](#) (Confluence)
- [E-mail](#) (Webmail)
- [Egenrapporteringen](#) (HR+)
- [Employee benefits](#) (KTH for me)
- [Fillagring i molnet](#) (KTH Box)
- [Inköps & E-beställningsverktyg](#) (WISUM)
- [Ladok](#)
- [Learning Management System](#) (Canvas)
- [Travels & expenses](#) (KTH-Res)
- [Utbytesstudenter](#)
- [Video recording](#) (KTH Play)
- [eISP - Individual study plans](#)

**STUDENT AT KTH** | [Student på KTH](#)

Search the KTH website

[KTH](#) [STUDIES](#) [RESEARCH](#) [CO-OPERATION](#) [ORGANISATION](#) [ABOUT KTH](#) [STUDENT AT KTH](#)



# Student web (Student at KTH)

The screenshot shows the KTH Student web interface. The top navigation bar includes links for 'Student', 'Alumni', 'Staff', and 'KTH på svenska'. Below this is a search bar with the text 'Search the KTH website' and a 'Search' button. The main content area is divided into two columns. The left column contains a list of links under the heading 'Student at KTH': 'New at KTH', 'Your studies', 'Course Schedules', 'Course and programme directory', 'During a programme', 'Before and during a course', 'Contact persons and student counselling', 'Student support and student life', 'Our campuses and maps', 'IT-Support', and 'Future and career'. The right column features two main sections. The first section, titled 'Newly admitted students', includes a large image of a KTH building and a statue, and text welcoming new students. The second section, titled 'Have you been discriminated against or sexually harassed?', includes a large image of a KTH building and a statue, and text providing information on support for discrimination and harassment.

**Student at KTH**

Student Alumni Staff KTH på svenska

Search the KTH website

Home Studies Research Co-operation About KTH Library

**Student at KTH**

- New at KTH
- Your studies
- Course Schedules
- Course and programme directory
- During a programme
- Before and during a course
- Contact persons and student counselling
- Student support and student life
- Our campuses and maps
- IT-Support
- Future and career

**Newly admitted students**

Have you been admitted as a student at KTH starting this autumn? Congratulations—an exciting future awaits you!

We have gathered all the information you need before arriving in August.

[New student at KTH](#)

**Have you been discriminated against or sexually harassed?**

If you need support when you feel that you have been discriminated against, harassed, sexually harassed or victimized contact your appointed contact person at your School.



# Programme web

**My programmes** [Help / feedback](#)

**Favorites** | [All subscriptions](#)

- ★ Master's Programme, Embedded Systems, 120 credits (TEBSM, 120 cr)
- ★ Master's Programme, Nanotechnology, 120 credits (TNTEM, 120 cr)
- ★ Master's Programme, Software Engineering of Distributed Systems, 120 credits (TSEDM, 120 cr)

**Embedded Systems, 120 credits**  
TEBSM | 120 CREDITS

[My settings](#)

[✎](#) [🔍](#) [📁](#)

**Overview**

- News feed
- Calendar
- Book a group room
- Master coordinators
- Degree project >
- Individual study plan
- Student Service Support and Service Center EECS
- Study abroad
- Study programme
- Information for newly arrived students autumn 2018
- Master's Degree Student

## Master's Programme, Embedded Systems, 120 credits

[Create description](#)

*The text below will only be displayed if there is no description.*

### Welcome to programme website!

On these pages students and employees at KTH can share information, discuss or ask questions about everything related to the programme. There are also links to programme related information that may be important for you as a student.

Not all programmes have started to fully use these programme websites. All students that are admitted to this programme will however automatically get a subscription and therefore receives notifications through e-mail about activities on this page. There is a moderator function that captures unanswered questions to the public agency KTH and sends them on to the proper authorities.

- [More about the program webs](#)

### event

Thu 22 aug 08:00-12:00 [Information](#)  
Location: Ka-Sal B  
[See the entire calendar](#)

### Latest responsible posts

- As a master student at KTH you have an ... 26 April at 14:01
- Important update - We have a new email address. ... 3 April at 12:58
- Drop in - Career  
Date: Wednesday 3 April Time: ... 27 March at 11:32

[Read entire news feed](#)

[Write post...](#)

### Latest from your news feed

- Master's Programme, Embedded Systems, 120 credits (TEBSM, 120 cr) Event  
"Information, 22 August 2019"



# Information about your studies at KTH

- The academic year is divided into two terms (Autumn and Spring) and in four periods
- Autumn term **HT20**: 24 August 2020 until 15 January 2021 (P1 and P2)
- Spring term **VT21**: 18 January 2021 until 8 June 2021 (P3 and P4)
- Exams are held at the end of each period





## Information about your studies at KTH

- Course registration is mandatory and should be done no later than 31 August. Without a course registration you cannot get access to the course material, register for exams and your results can't be reported. Registration of a course indicates your intention to attend the course that you have been admitted to.
- If you don't want to take a course you're registered on, you need to make an early interruption via Ladok (notify discontinuance) within 3 weeks from the course start (by 14 September). Important for fee paying students!
- You will select your courses for the upcoming term (spring **VT21**) via [universityadmissions.se](https://universityadmissions.se).
- Course selection dates to remember: 1 – 15 November for your spring courses and 1 – 15 May for your autumn courses. Check your course schedule online to avoid course clashes. We will publish information on this on the programme web.



## More about course selection

- Think about the limit - 120 credits REGISTERED COURSES!
- A maximum of 30 credits per term
- If you remove a mandatory course, you might not fulfill the requirements for your degree.
- Always prioritise your mandatory courses when selecting your upcoming courses



# Courses

Each course at KTH has a name and a course code

For example **IL2206 – Embedded Systems**

All courses starting with the letter D, E and I are offered by the EECS School



## Exam registration

- To take the exam, please make sure you:
  - Are registered on the course
  - Register for the exam during the registration period
- You register for the exam through your personal menu.
- Problem to register for an EECS examination, please contact Student Support by following the link: [www.kth.se/en/eecs/studentsupport](http://www.kth.se/en/eecs/studentsupport)
- Problems to register for an examination at another School at KTH Campus, please contact their Student Support. Find a list of all KTH's Student Support Offices [here](#).
- For more information regarding rules and regulations please follow the link: <https://www.kth.se/en/student/kurs/tentamen>

## Degree and graduation

- When you have completed your studies at KTH you need to apply for your degree certificate. You apply through the personal menu online.
- The Graduation Ceremony is usually held at City Hall twice a year (May and December). Due to Covid-19, the ceremony might be cancelled.







## FUNKA – Additional support for students with disability

- If you need help with study support please contact our FUNKA Coordinators, [funka@kth.se](mailto:funka@kth.se)
- Visiting adress: Drottning Kristinas väg 4, 100 44 Stockholm  
Email: [funka@kth.se](mailto:funka@kth.se) Phone number: 08-790 75 00
- If you want to apply for support visit the homepage:  
<https://www.kth.se/en/student/studentliv/funktionsnedsattning>



## Student Health

- Stockholm Student Health Services complements the public healthcare that is available to residents of Sweden. As a KTH-student you are welcome to contact us if you have health related issues. You can get individual support or join the workshops that are available.
- For more information visit the homepage  
<https://www.kth.se/en/student/studentliv/kropp-sjal/studenthalsan/valkommen-till-studenthalsan-i-stockholm-1.409886>



This video can be found on <https://www.kth.se/en/student/newatkth/degree-programme-stu/support-from-kth-1.703729>



# Information from Central KTH Administration – Course/Film clips can be found on

<https://www.kth.se/en/student/newatkth/>

- KTH Entré, a meeting point on campus that you can go to with your questions
- Study- and Career Counselling, can help and guide you in your studies
- Compensatory Support, through Funka, for students with a permanent disability that are in need of extra support
- Student Health Services, where you can get individual support or join group activities
- Rights and Responsibilities, for KTH students
- Security at KTH, Feel safe at KTH with basic information about security and risks
- Cheating and Plagiarism, guides you on how to use reference material in a correct manner
- KTH Library, gives you access to e-resources, science lectures and information retrieval
- Gender Equality, Diversity and Equal Opportunities as KTH's core values
- IT-Support



KTH has zero tolerance for discrimination and harassment

If you see someone being harassed or experience it yourself, don't hesitate to call the contact persons below.

Contacts at Schools:

- **ABE:** Cecilia Månson Blom, +46 8 790 94 21 [cecilia.manson@abe.kth.se](mailto:cecilia.manson@abe.kth.se)
- **CBH:** Pelle Dalhammar, +46 8 790 65 19 [perda@kth.se](mailto:perda@kth.se)
- **EECS:** Marianne Lundin, **+46 8 790 44 82** [marianlu@kth.se](mailto:marianlu@kth.se)
- **ITM:** Andreas AlmArvidsson +46 8 790 91 60 [andreas.alm.arvidsson@itm.kth.se](mailto:andreas.alm.arvidsson@itm.kth.se)
- **SCI:** Hannasara Karlsson, +46 8 790 75 88 [hsk@kth.se](mailto:hsk@kth.se)

Central points of contact:

- **KTH student support:**
  - Lena Salomonson: +46 8 790 65 35 [lenaas@kth.se](mailto:lenaas@kth.se)
  - Nina Holmsten: +46 8 790 61 76 [nholmste@kth.se](mailto:nholmste@kth.se)
- **THS student union:** +46 79 347 96 87 [studiesocialt@ths.kth.se](mailto:studiesocialt@ths.kth.se)
- **Student Health** [Contact details can be found here](#)





This video can be found on <https://www.kth.se/en/student/newatkth/degree-programme-stu/your-safety-and-rights-1.997848>



## Studies this term and Covid-19

- In order to provide conditions for new students to get the best possible start in their studies, those who are beginning their first year – at either preparatory, undergraduate or advanced level – will get priority and have a mix of digital and on-site education.
- For other students, education will be largely digital. Labs and workshops will be held on campus and adapted to reduce the risk of infection.
- To stay updated on the latest information, [please visit Student at KTH.](#)



## Enjoy your time at KTH and keep yourself updated

- Don't forget to regularly check your KTH-email account and the programme web!
- I will use it to inform you about important matters concerning your studies
- Always write your KTH-number (T-number) or Swedish personal-number in your emails



## **Specific Programme information after lunch**

- Don't forget to attend the programme meeting after lunch according to the invitation you have received from us via email.



## The most common questions

