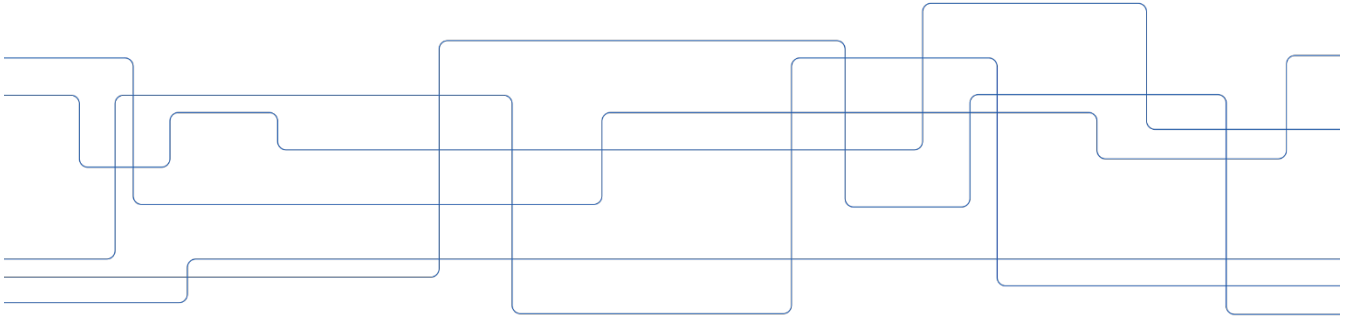




# Welcome to KTH!

School of Engineering Sciences (SCI)





# Welcome to the master studies at the School of Engineering Sciences

Gunnar Tibert

Director of 1<sup>st</sup> and 2<sup>nd</sup>  
cycle education

School of Engineering  
Sciences (SCI)





# Preparations for the Autumn 2021 semester

- KTH is open and teaching and examination can be campus-based for all students, but with restrictions.
- Programme directors and teachers have planned for a good balance between campus-based and digital learning activities.
- However, planned things may change quickly due to changed circumstances. Keep yourself well updated through the course responsible, course Canvas page and fellow students.
- Teamwork! Help each other with studies, motivation, keeping a safe distance, etc.
- Good luck with your studies!



# Agenda

- COVID-19
- KTH
- School of Engineering Sciences (SCI)
- Support and Services
- Safety
- Canvas
- Studies and Administration
- Student Union
- Questions

To ask a question, please raise your digital hand in Zoom or write them in the chat box. Save your programme-specific questions to the upcoming programme meeting.



# COVID-19 Information

- Keep yourself updated with the latest guidelines and regulations at KTH on [www.kth.se/corona-eng](http://www.kth.se/corona-eng)
- Keep yourself updated with the latest guidelines and regulations in Sweden at Folkhälsomyndigheten (*Public Health Agency of Sweden*) at [www.folkhalsomyndigheten.se/](http://www.folkhalsomyndigheten.se/)



## If you are unwell

Stay at home if you experience any symptoms. If your condition worsens dial 1177 or visit [1177.se](http://1177.se) for healthcare advice. For emergency assistance, dial 112.



## Respect signs and instructions

The signs on campus provide instructions from KTH that aim to limit the spread of the virus. Please follow them.



## Keep your distance

Maintain physical distance from other people, both indoors and outdoors.



## Wash your hands

Wash with soap and hot water frequently, for at least 30 seconds. Alcohol-based hand sanitiser can be used as well.



# KTH - Royal Institute of Technology

- Established in 1827
- 13 000 full-time students
- 5 campuses
- 5 schools
- Around one third of all students are from outside of Sweden



# SCI – School of Engineering Sciences

- One of 5 schools at KTH
- Consists of 4 departments
  - Physics
  - Mathematics
  - Engineering Mechanics
  - Applied Physics



# Education at advanced level

- Master's programmes:
  - Mathematics
  - Applied and Computational Mathematics
  - COSSE (dual degree)
  - Engineering Physics
  - Nuclear Energy Engineering
  - Aerospace Engineering
  - Engineering Mechanics
  - Naval Architecture
  - Vehicle Engineering
  - Railway Engineering



# Organisation for two-year master's programmes

## Director for 1st and 2nd cycle studies

Gunnar Tibert

### Directors for master's programmes:

**Your primary contact for course selection and academic advice!**

Fredrik Viklund (Mathematics)  
Michael Hanke (Applied and Computational Math. & COSSE)

Magnus Andersson (Engineering Physics)  
Jan Dufek (Nuclear Energy Engineering)

Raffaello Mariani and Stefan Hallström (Aerospace Engineering)  
Sören Östlund (Engineering Mechanics)  
Karl Garne and Magnus Burman (Naval Architecture)  
Mikael Nybacka (Vehicle Engineering)  
Carlos Casanueva Perez (Railway Engineering)

### Student counsellors at SCI student office

For changes in course selection (after discussion with director) and administrative questions:

Mathematics and physics programmes:  
Susanne Lilliehöök, [svl-ctfys@sci.kth.se](mailto:svl-ctfys@sci.kth.se)

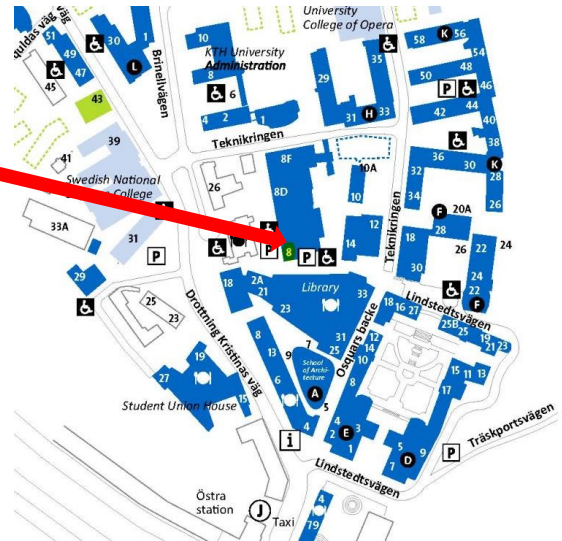
Applied mechanics programmes:  
Karin Gorgén, [svl-cfate@sci.kth.se](mailto:svl-cfate@sci.kth.se)

Dual Master, COSSE, Railway  
My Delby & Elin Wiljergård Plith,  
[master@sci.kth.se](mailto:master@sci.kth.se)



# Education office

- The Student Office at SCI
  - Teknikringen 8, entry level.
  - Provides guidance and support throughout your studies
  - Assists with change of courses
  - We handle credit transfers, exemptions, and follow-up of study results





# Course and Student Offices

At a student office (also called course offices) you can:

- re-register for a course
- pick up exams or purchase course compendiums

What office you should turn to depends on which school/department is responsible for the course.

If you have questions about what course to choose or your studies on your program, you should instead turn to your education office or programme counsellor.

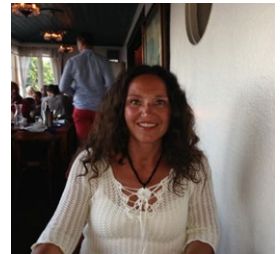
Contact details: [Course and Student Offices | KTH](#)



# Student counsellor for two-year master's programmes

## Susanne Lilliehöök

- Engineering Physics
  - Applied and Computational Mathematics
  - Nuclear Energy Engineering
  - Mathematics (Joint programme with Stockholm University)
- 
- E-mail: [svl-ctfys@sci.kth.se](mailto:svl-ctfys@sci.kth.se)





# Student counsellor for two-year master's programmes

## Karin Gorgén

- Aerospace Engineering
  - Engineering Mechanics
  - Naval Architecture
  - Vehicle Engineering
- 
- E-mail: [svl-cfate@sci.kth.se](mailto:svl-cfate@sci.kth.se)





# Master programme coordinator and student counsellor

## My Delby & Elin Wiljergård Plith

- Computer Simulations for Science and Engineering (COSSE)
- Nuclear Energy Engineering: Dual Master Tsinghua
- Applied and Computational Mathematics: Dual Master programme Louvain
- Aerospace Engineering Dual Master programme Bologna
- Railway Engineering
- E-mail: [master@sci.kth.se](mailto:master@sci.kth.se)





# KTH Entré

- Central meeting point for service and information
- Help with KTH account, access card and study certificates

Drottning Kristinas väg 4

Regular opening hours:

Monday – Friday 8:00 – 16:30

For general questions e-mail [info@kth.se](mailto:info@kth.se)



# KTH account – collect at KTH Entré

- Access to E-mail account
- Access to IT-services
- The KTH access card gives you access to computer rooms and relevant entrance doors on campus
- Pin code – only during certain hours



# Temporary registration number (T-number)

- Your T-number consist of your date of birth, the letter T and three digits. (YYMMDD-TXXX)
- The T-number is used at most Swedish Universities to register International students. At KTH, it is also used by the Student Union and the Accommodation Office



# Swedish personal identity number

- International students who have a residence permit for at least 12 months or are admitted to studies for 13 months or more, can apply for a Swedish personal identity number from the Swedish Tax Agency, *Skatteverket*.
- <https://www.kth.se/en/student/newatkth/degree-programme-stu/swedish-personal-identity-number-1.443883>
- <https://www.skatteverket.se/servicelankar/otherlanguages/inenglish.4.12815e4f14a62bc048f4edc.html>



# Libraries and academic support

- Main library at KTH campus
- The library offers academic support
- Please check the link below to find the latest news about the library opening hours and support
- <https://www.kth.se/en/biblioteket/nyheter/valkommen-tillbaka-1.991296>



# Student Health Services

Support and counselling for problems related to your studies at KTH

- You can talk to a nurse, counsellor or a therapist depending on your problems/issues
- Bound to confidentiality
- Free of charge

[Contact Stockholm Student Health Services.](#)



# How to seek healthcare for non-emergent issues

- By calling the number **1177**, you will get advice from a nurse about what you can do and where to go if you need care
- 1177 has information about what you can do yourself to help you feel better and speed up your recovery
- On their website you can find more information about finding your way around the health care system in Sweden:  
[www.1177.se](http://www.1177.se)
- **The number works nationwide, 24 hours a day, 7 days a week, all year around and the call costs like a regular call.**



# Safety

In case of emergency, call **112**  
(Ambulance, police and fire  
brigade)

Within KTH **08-790 7700**

When you are on campus,  
always keep you ID with you

[Safety video](#)



## KTH has zero tolerance for discrimination and harassment

If you see someone being harassed or experience it yourself, please contact us.

- **SCI:** Hannasara Karlsson, +46 8 790 75 88 [hska@kth.se](mailto:hska@kth.se)

- **KTH student support:**

Lena Salomonson: +46 8 790 65 35 [lensaas@kth.se](mailto:lensaas@kth.se)

Nina Holmsten: +46 8 790 61 76 [nholmste@kth.se](mailto:nholmste@kth.se)

- **THS student union:** +46 79 347 96 87 [studiesocialt@ths.kth.se](mailto:studiesocialt@ths.kth.se)

- **Student health:** +46 8 674 76 92 or +46 8 674 77 05 [studenthalsan@su.se](mailto:studenthalsan@su.se)



# Academic Year 2021/22

Autumn semester

30 August 2021 – 17 January 2022

Spring semester

18 January 2022 – 7 June 2022

More info: [2021-2022 | KTH](#)



# Master's programmes 120 credits

- Master's degree 120 credits
  - Plan your full two years immediately by following the programme syllabus <https://www.kth.se/student/kurser/kurser-inom-program?l=en>
  - Double check that you have the courses that is requested in your programme.
  - To start your Master thesis you must have reached 60 credits (240 credits for civilingenjörstudenter)
  - Keep a continuous dialogue with the Programme director
-



# Course selection

- You will discuss your courses with your Programme Director this afternoon
  - Look into the course syllabus for your programme,  
<https://www.kth.se/student/kurser/kurser-inom-program?l=en>
  - You will apply directly yourself for the **mandatory courses** at "Your pages" when you log in with your KTH account
  - If you take **conditionally elective** or **elective courses** please fill them into the study plan
  - [Study Plan 2021 | Master students 2021 - Study Plan | KTH](#)
-



## Extra courses

- A student is not guaranteed more credits than the programme (120 credits) that he/she has been admitted to includes.
  - **A maximum of one 7.5 credit course** may be allowed during the programme studies. **ONLY** applicable to students who are doing well and completing their courses.
  - Students liable to pay tuition fee cannot take any extra courses (without being liable to further fees)
-



# Canvas, E-learning platform at KTH

All courses have a Canvas site, you can access Canvas by logging into the KTH website and go to your services.

- Find course material and other relevant information that your teachers have uploaded in the course room.
- Keep in touch with teachers and fellow students through discussion forums and announcements.
- Hand in assignments.
- Take Quizzes.
- Get feedback and see assessments and results. The results should be regarded as preliminary and not as the examiner's grade decision (which is communicated via Ladok).

More information: [Canvas | KTH](#)



# Information Videos


- Rights and responsibilities – Swedish law and KTH's regulations give you a lot of rights as a student, but also some responsibilities
- Equality office
- Compensatory support for student with disabilities – FUNKA
- Student Health Service – Stockholm Student Health Service
- Academic Resource Centre and Library
- Safety
- IT Introduction

<https://www.kth.se/en/student/studier/newatkth/exchange-student/support-from-kth-1.703729>



# Programme Web!

## Useful information and latest news




 Karin Schedule Courses **Programme** Groups Services

Programme Masters Program

### Master's Programme, Engineering Physics, 120 credits

TTFYM | 120 CREDITS


⚙ My settings

Overview

News feed

Calendar

Programme syllabus 

Applied Physics Day

[KTH / Programme web](#) / Master's Programme, Engineering Physics, 120 credits


## Master's Programme, Engineering Physics, 120 credits

Change description

Welcome to the programme website!

Here, you will find all kinds of useful information related to the Master's programme in Engineering Physics at KTH. This includes

### Next calendar event

Tue 6 oct 17:00-18:00  [Info](#)  
Location: F2  
[See the entire calendar](#)

### Latest response posts

- [Autumn semester 2020 COVID-19 - adaptation .](#) at 19:50
- [Would you like to become Student Ambassador for](#) May at 14:16

Remember to check it regularly!



# Personal menu/services

Current education

Completed education

Certificates

Qualification

Cases

Current education

CURRENT

UPCOMING

UNCOMPLETED

Erasmus-Technische Universität Darmstadt  
(DE)

[Computer Security | 6.0 hp | DD2395](#)

2018-08-27 – 2019-01-14 | 34567 | 100 % | KTH  
Campus

[Application for "Examination" is open](#)

Erasmus-Technische Universität Darmstadt  
(DE)

[Artificial Intelligence | 6.0 hp | DD2380](#)

2018-08-27 – 2019-01-14 | 51447 | 17 % | Stockholm

Register during the period  
2018-07-01 - 2018-09-03

[Register](#)

There is no uncompleted education



# Register for or cancel a course

## Artificial Intelligence 6.0 hp DD2380

### About the session

Study period: 2018-08-27 – 2019-01-14

Code: 51447

Pace: 17 %

Type of instruction: Normal teaching

Place: Stockholm

[Result](#)



[Participation on the course](#)



### PARTICIPATION ON THE COURSE

#### Study period 1

(2018-08-27 – 2019-01-14)

Scope: 6.0 hp

☒ I want to register

When you have registered on the course you are counted as a student for the term and can participate in the tuition.

Register

☐ I want to cancel

If you have decided not to start a course on which you have been accepted, it is important that you notify us of your cancellation as soon as possible so that the place can go to the next applicant in the queue.

Cancel

Ladok - mit-integrati



# Register for examination

[Current education](#) [Completed education](#) [Certificates](#) [Qualification](#) [Cases](#)

Computer Security 6.0 hp DD2395

About the session

Study period: 2018-08-27 – 2019-01-14

Code: 34567

Pace: 100 %

Type of instruction: Normal teaching

Place: KTH Campus

[Result](#) [Participation on the course](#)

RESULT

Final grade

Grade:-  
Examiner: -

Examination - 3.0 hp

Grade:-  
Examiner: -  
Code:-

2018-10-30 09:00 - 13:00 | Examination

Place: Stockholm

Application: 2018-07-01 - 2018-07-31

☒ I want to apply

Apply

It is mandatory to register for the examination in a course



# Schedule

## Schedule Search

- [www.kth.se/en/student/schema](http://www.kth.se/en/student/schema)
- You can view your timetables in calendar programs, such as Google calendar, Outlook or Webmail
- Contact course responsible with course or schedule specific questions

## Cannot find your lecture hall?

Please go to [www.kth.se/places](http://www.kth.se/places)

Going between campuses?

[www.sl.se](http://www.sl.se) or SL app



# Exchange studies

- One semester at one of KTH's partner universities.
- For students at a master's programme it is only possible to study abroad within an exchange during the autumn semester of year 2
- Application opens at the end of November, the application deadline is mid-December.
- <https://www.kth.se/en/student/program/utlandsstudier>



# International coordinators for exchange studies

- **Veronika Wallinder**

- Applied And Computational Mathematics
  - Engineering Physics
  - Mathematics
  - Nuclear Energy



- **Zebine Bojler**

- Aerospace Engineering
- Engineering Mechanics
- Naval Arcitecture
- Vehicle Engineering



- **E-mail adress:** [exchange-out@sci.kth.se](mailto:exchange-out@sci.kth.se)



# THS International

- Part of the Student Union
- Arranges social and educational activities for newly arrived international students

[International@ths.kth.se](mailto:International@ths.kth.se)

[www.ths.kth.se/international](http://www.ths.kth.se/international)



# Student Chapters

Flight Chapter: [Flygsektionen – Sektionen för Farkostteknik på KTH](#)

Physics Chapter: <https://ths.kth.se/en/list/fysiksektionen>



# Student Ambassador

Do you want to become a student ambassador?

Work from Sep – May

- Answer questions via email from prospective students
- Participate in webinars
- Guided tours on campus
- Student fairs

We need ambassadors to the following programmes:

Aerospace Engineering

COSSE

Vehicle Engineering

Naval Architecture

Railway Engineering

Nuclear Energy Engineering



# What do I have to do now?

- Collect your KTH account.  
Without your account you cannot register for courses.
- Access “Personal menu” and learn how to navigate it.
- Register for your courses
- Take part in the Introduction Programme with lots of activities and information
- Have fun and enjoy your time at KTH!



# Questions?

Thank you for joining the meeting today and  
good luck with your studies!