



# Welcome to KTH!

Exchange studies autumn semester 2023





# International coordinators

As your coordinators, we will be your key academic contact during your studies at KTH. We can help you with any academic or study-related concerns you might have

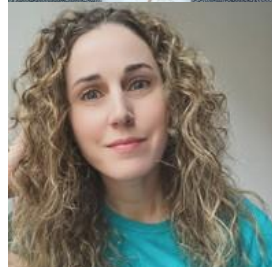
Contact us at:

[exchange.in@eecs.kth.se](mailto:exchange.in@eecs.kth.se)

or [dd@eecs.kth.se](mailto:dd@eecs.kth.se) (double degree and dual master)



**Malin Vestin**



**Kicki Gabriellsson**



**Manja Schubert**

---

# Welcome to Stockholm and Sweden!



Stockholm with about 1 million inhabitants is located on 14 islands. Largest city and urban area in Sweden. Four distinct seasons.



# KTH:s campuses

KTH has five campuses spread around Stockholm. KTH Campus is located in central Stockholm, while KTH's other campus areas are strategically located close to industry and research.

KTH's different campuses:

- KTH Campus (central Stockholm)
- KTH Flemingsberg
- KTH Kista
- KTH Solna
- KTH Södertälje



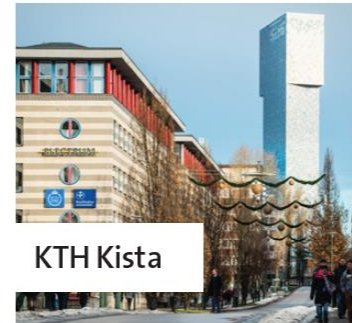
KTH Campus



KTH Solna



KTH Flemingsberg



KTH Kista



KTH Södertälje

Things to keep  
an eye on





## **Academic Year**

Two semesters with two periods each

## **Schedule**

Check exam dates, location/campus, attendance requirement

## **KTH account and access card**

Received upon arrival

## **Course administration process**

First course selection and admission. Registration to be done upon arrival with KTH account.





## Service and support at KTH

Student health services, compensatory support,  
student rights, and more



# Compensatory support from Funka

If you have a documented, permanent disability, you can receive compensatory support in your studies at KTH from the support group “Funka”. Learn more at:

<https://www.kth.se/en/student/stod/studier/funktionsnedsattning/funka-1.953214>

## Examples of permanent disabilities are:

- dyslexia
- physical disabilities
- neuropsychiatric disabilities: e.g. autism / asperger, ADHD, ADD
- permanent mental illness

## Examples of support are:

- longer writing time for exams and partial exams
  - help with taking notes
  - resources from the KTH Library, such as audiobooks, Braille or e-textbooks.
-



# Sources of information

The student web, New at KTH, and more





# New at KTH

- New at KTH is the web pages aimed at all newly admitted students.
- Here you will find basic information before and during your first time at KTH.
- The pages contain useful tips, guides and contact information.
- You can find the pages at **[kth.se/newatkth](https://kth.se/newatkth)**

[Student web](#) / [During your studies](#) / [New at KTH](#)

[< During your studies](#)

**New at KTH**

**Welcome to KTH**

[Degree programme students](#) >

[Exchange students](#) >

[Non-programme students](#) >

## Welcome to KTH

Are you a new student at KTH? Congratulations on being admitted! You are about to embark on a new and exciting adventure. These pages aim to help you start your preparations by introducing you to life in Stockholm, Sweden and life as a KTH student.



**Admitted degree programme students**

[Degree programme students](#)



**Admitted exchange students**

[Exchange students](#)



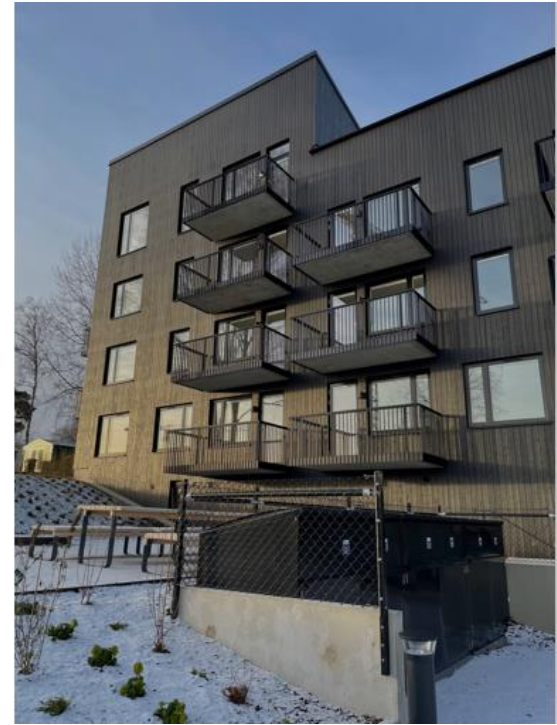
**Admitted non-programme students**

[Non-programme students](#)



# Accommodation

- Allocation in June
- No housing guarantee
- Prepare to search on your own





# How to contact KTH

For questions concerning your studies, contact your international coordinator. The coordinator can also help with study-related issues, or social matters related to your studies.

You can reach your international coordinator at [exchange.in@kth.se](mailto:exchange.in@kth.se)

For all other questions, when you don't know where to turn, email [info@kth.se](mailto:info@kth.se).





# THS, Student Union at KTH

The student union exists to represent the students and has a unique status with a legal right to influence KTH. THS exists both as a central organisation based in the union building Nymble (Drottning Kristinas Väg 15-19) and through the chapter linked to your field of study.

THS:

- helps you influence your education and conditions for studies
- coordinates a diverse association life with social activities
- is democratically structured and governed by you and other members

You can get more information from your buddy or at **[ths.kth.se](https://ths.kth.se)**  
- where you can also become a member!





# School Introduction at EECS

**22nd of August at 13.00 in lecture hall Q1**

With the Director of First and Second Cycle Education, the student chapters and international coordinators.

## **Welcome Ceremony in Stockholm City Hall**

**25th of August**

Registration opens 12th of July



**Questions?**

