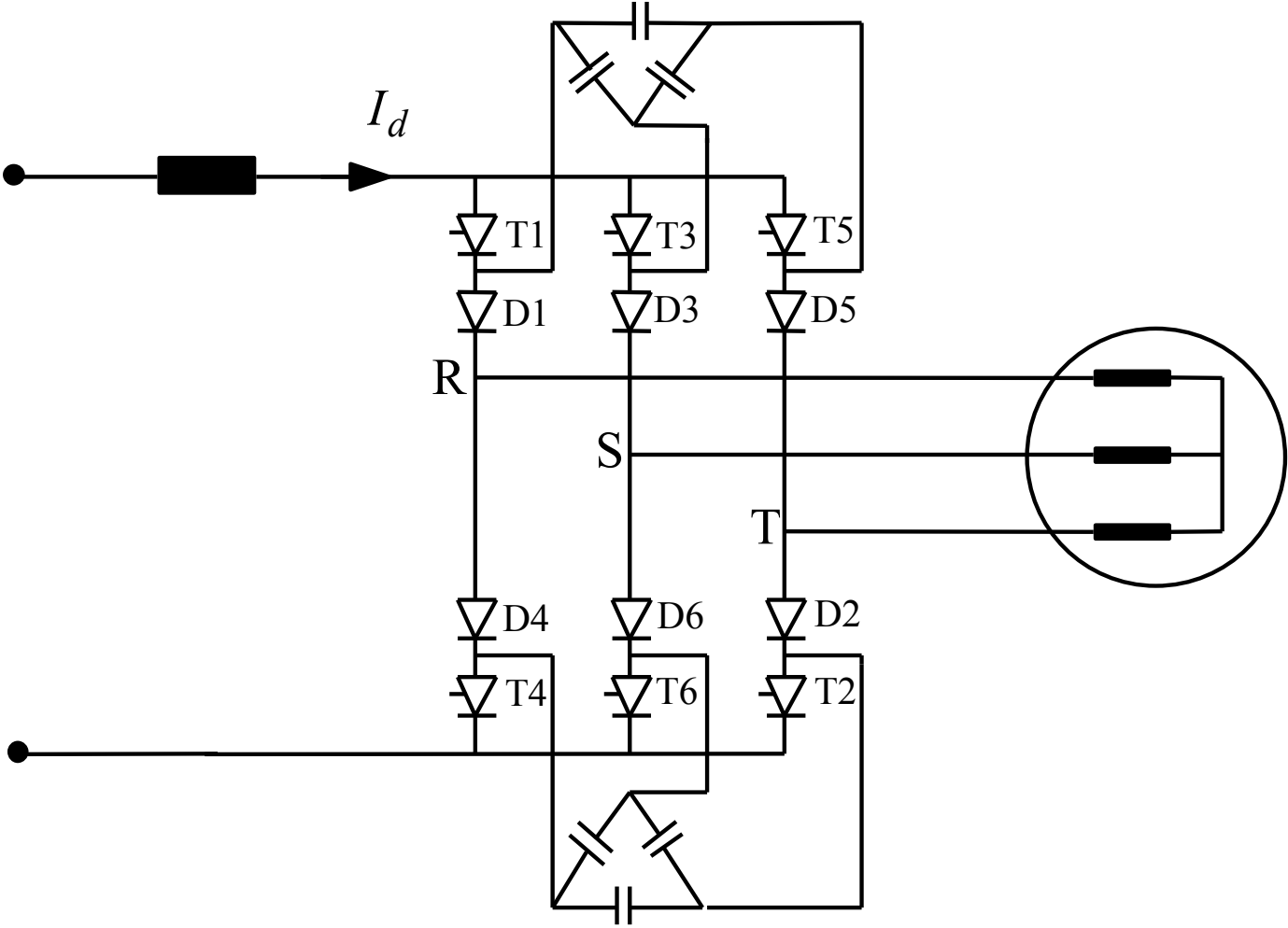
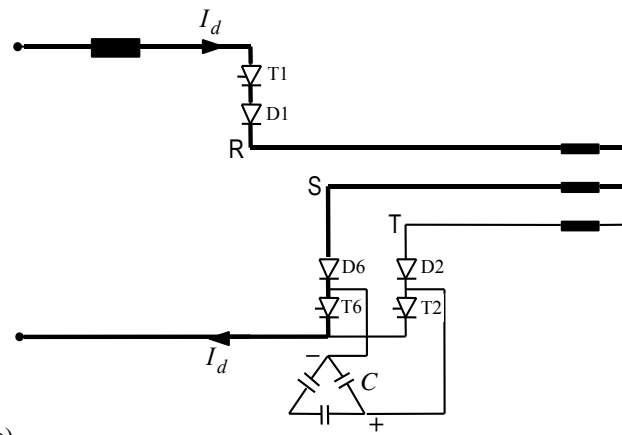
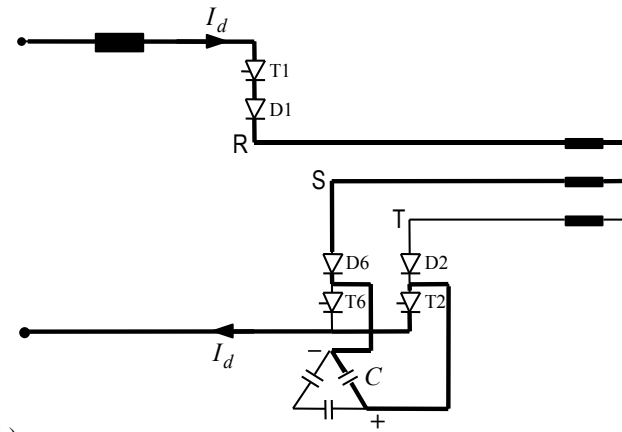


# Current Source inverter

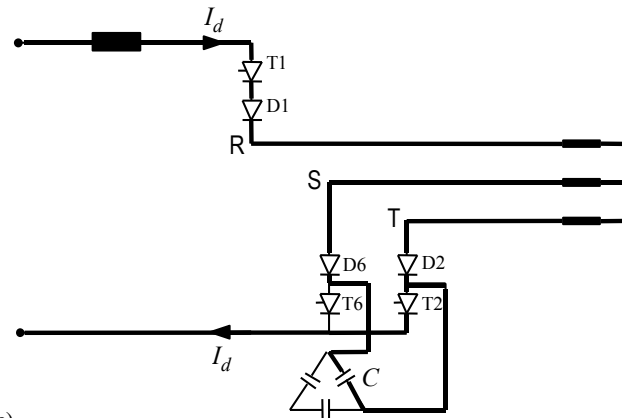




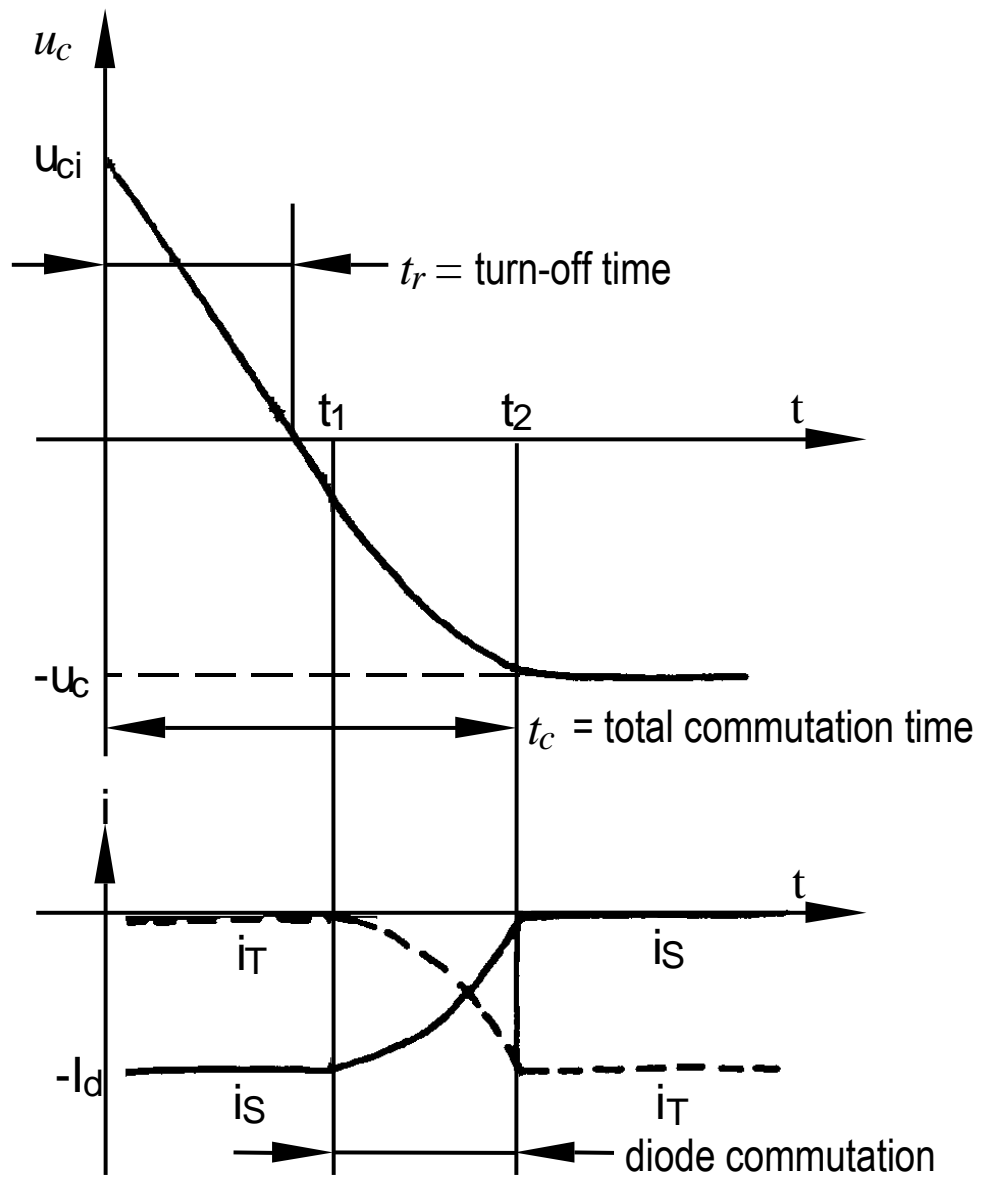
a)



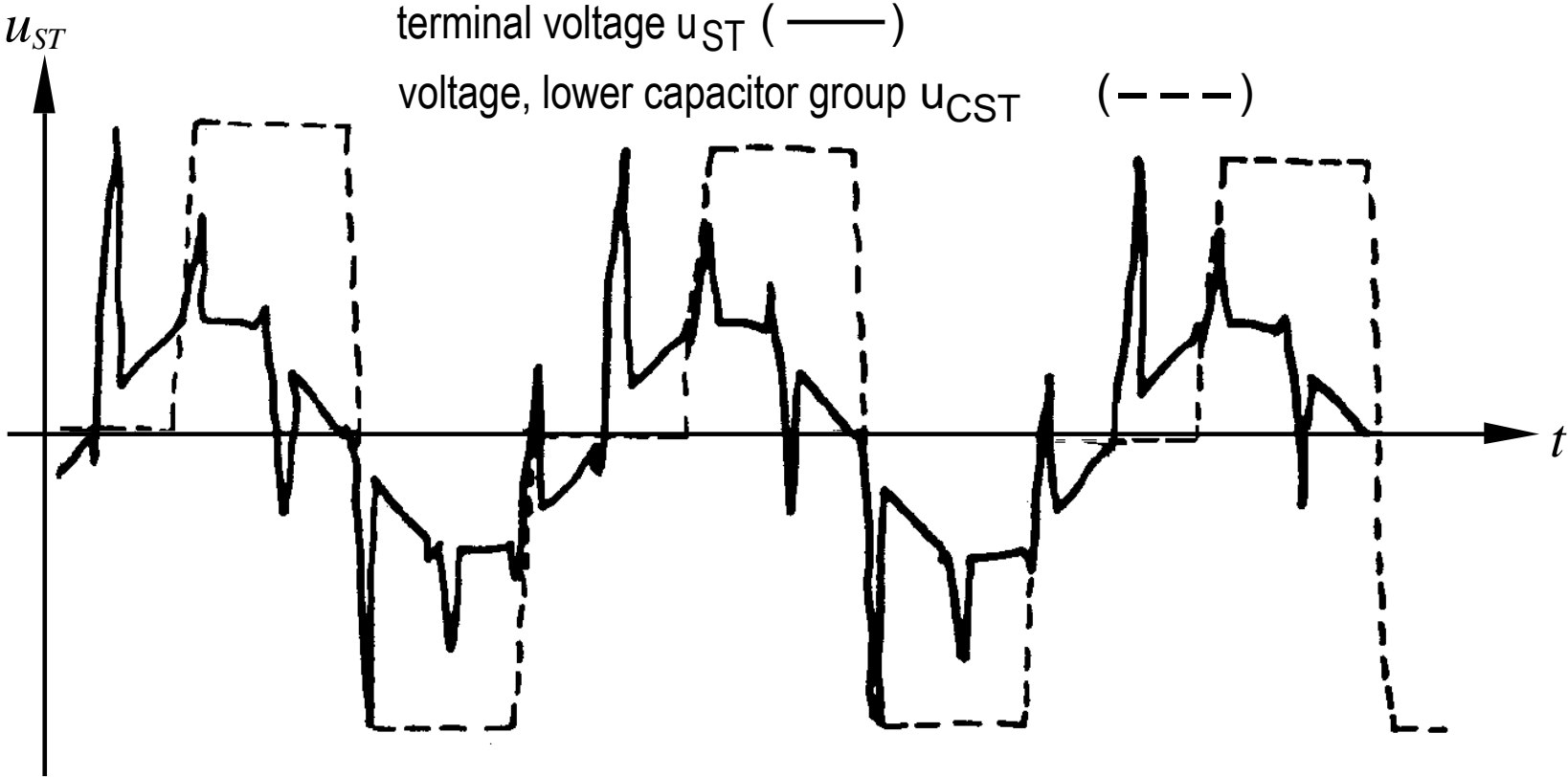
b)



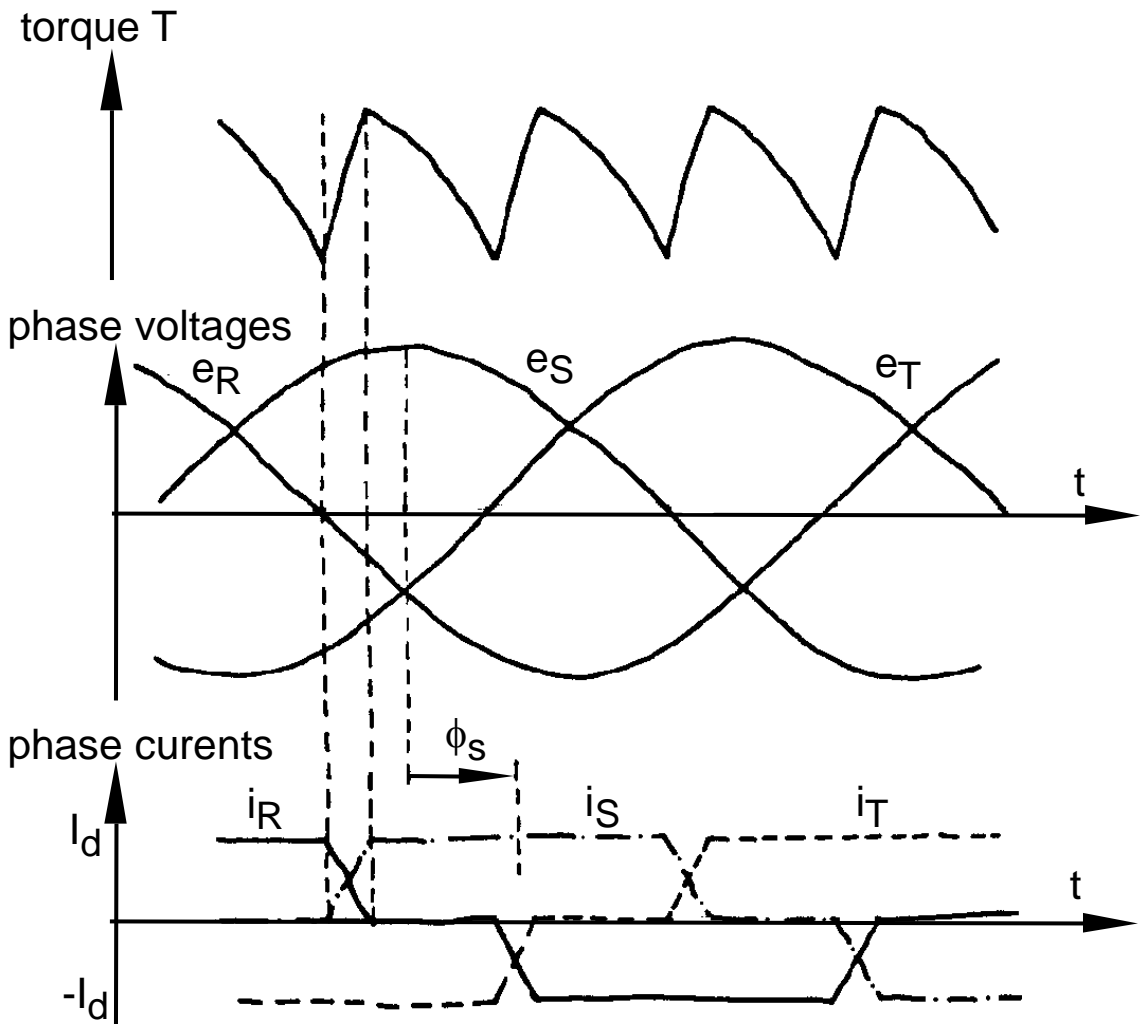
c)



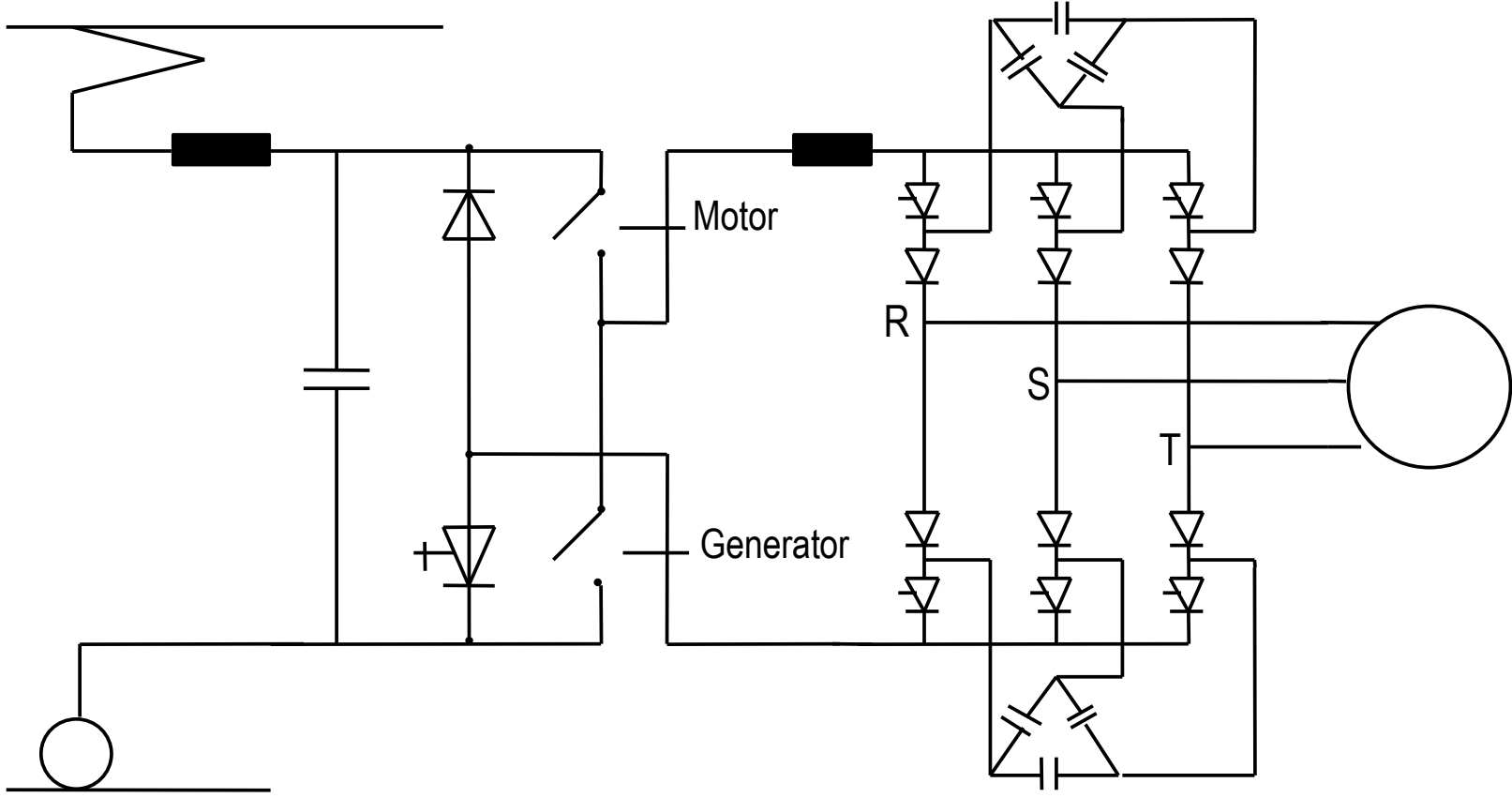
# Motor voltage when power is supplied from a current source inverter



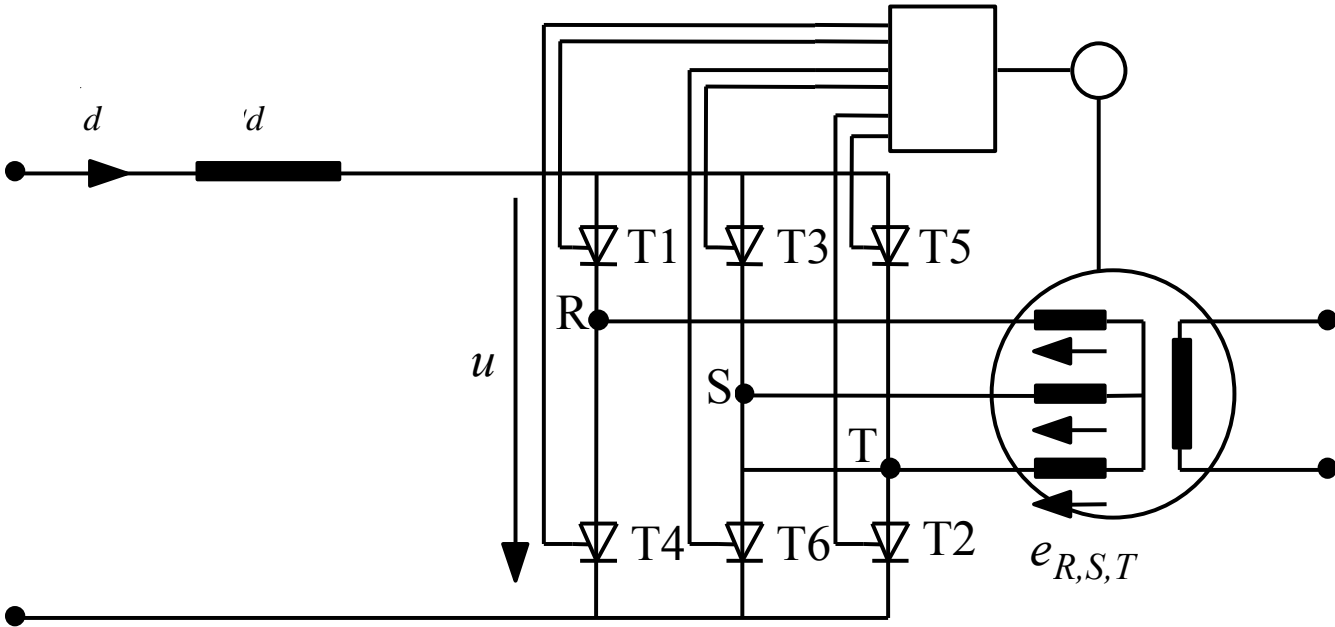
# Machine quantities at steady-state



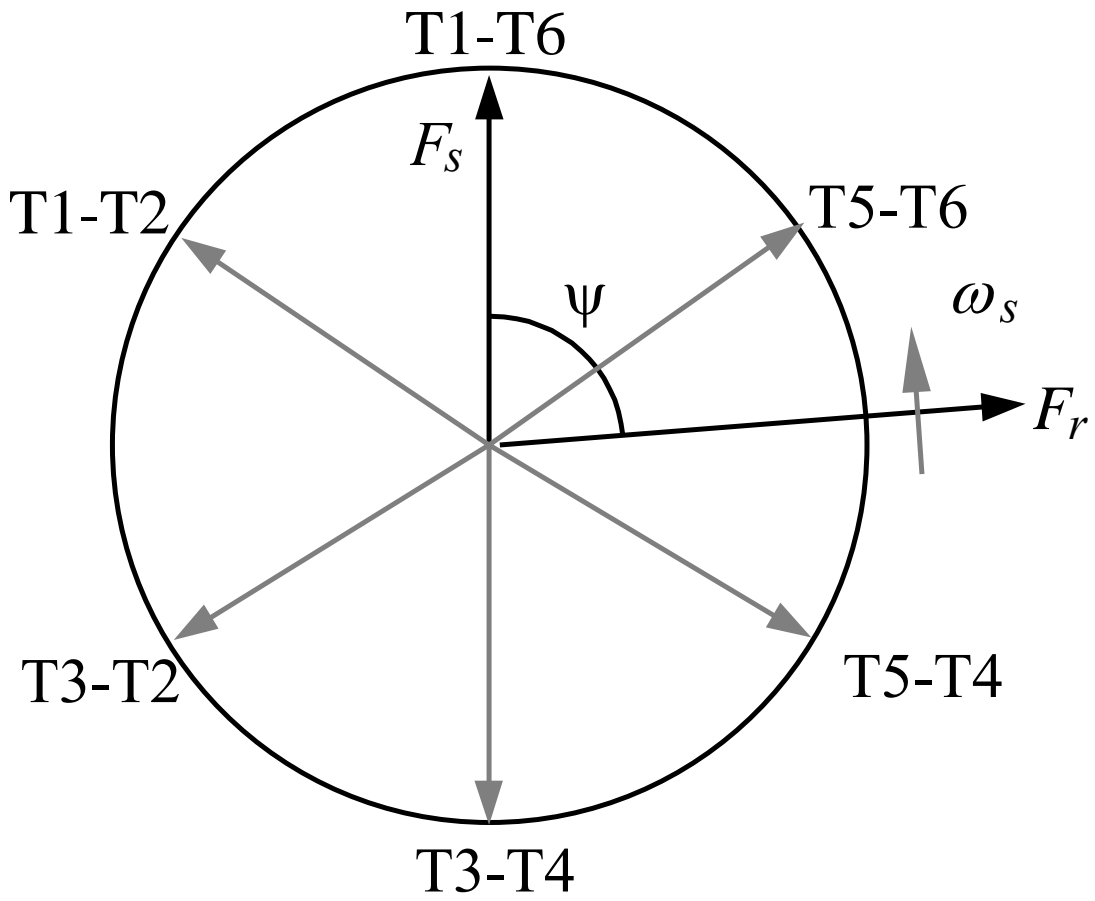
# DC voltage fed system with input converter and current source inverter



# Synchronous motor drive with current source inverter

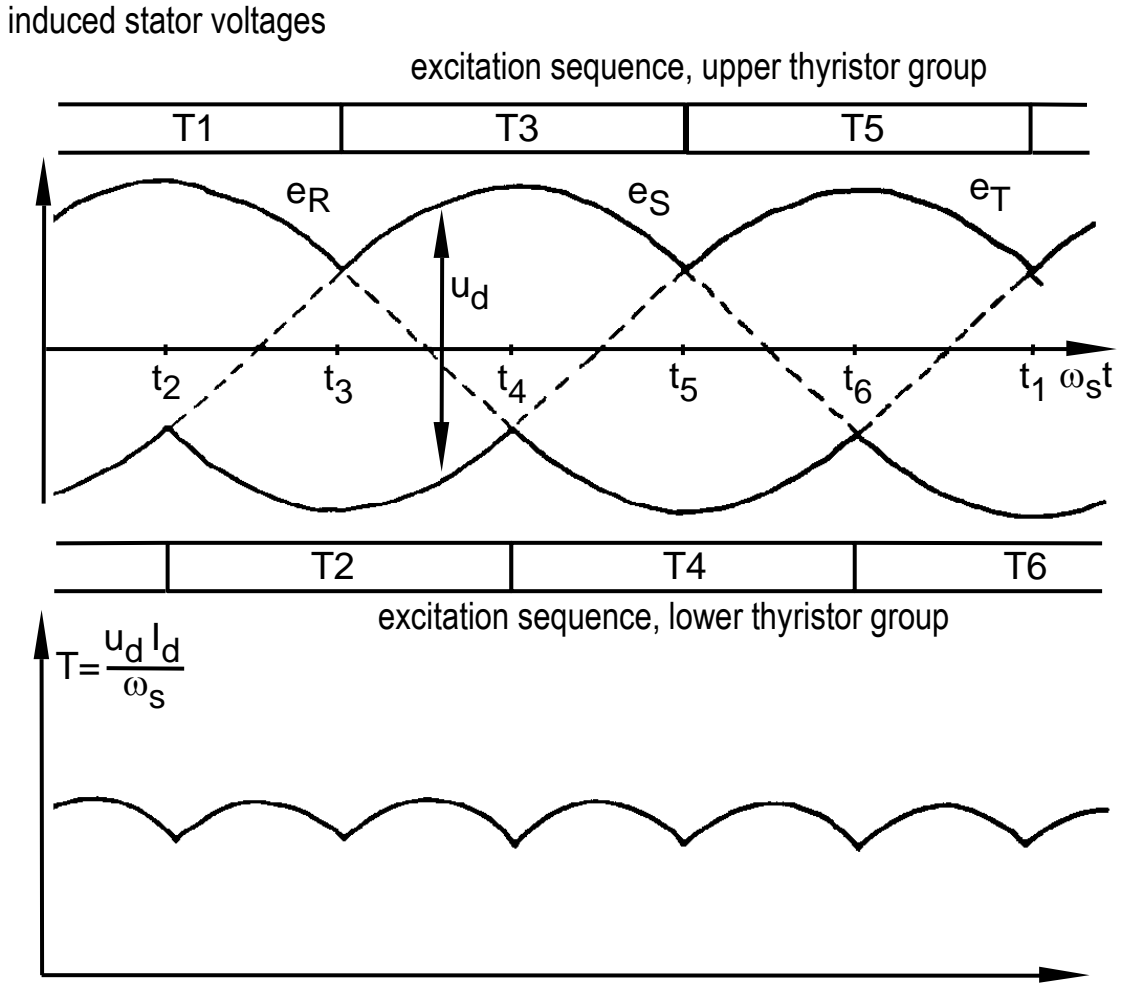


# The mmf wave's six directions

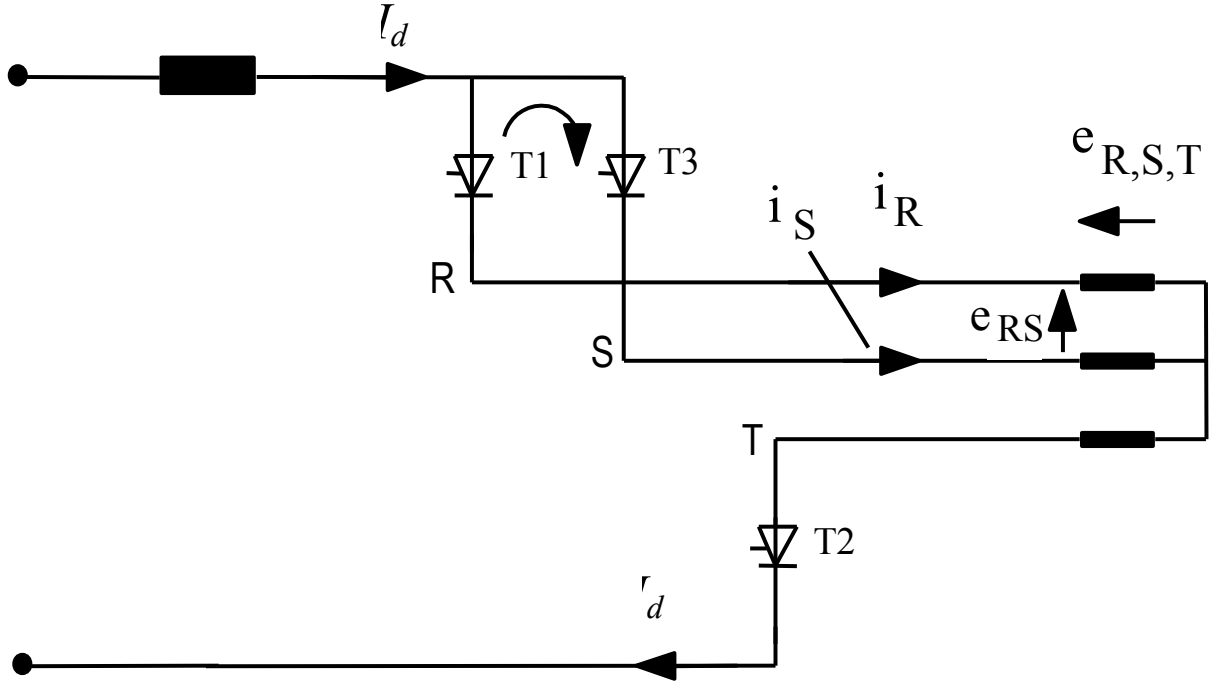


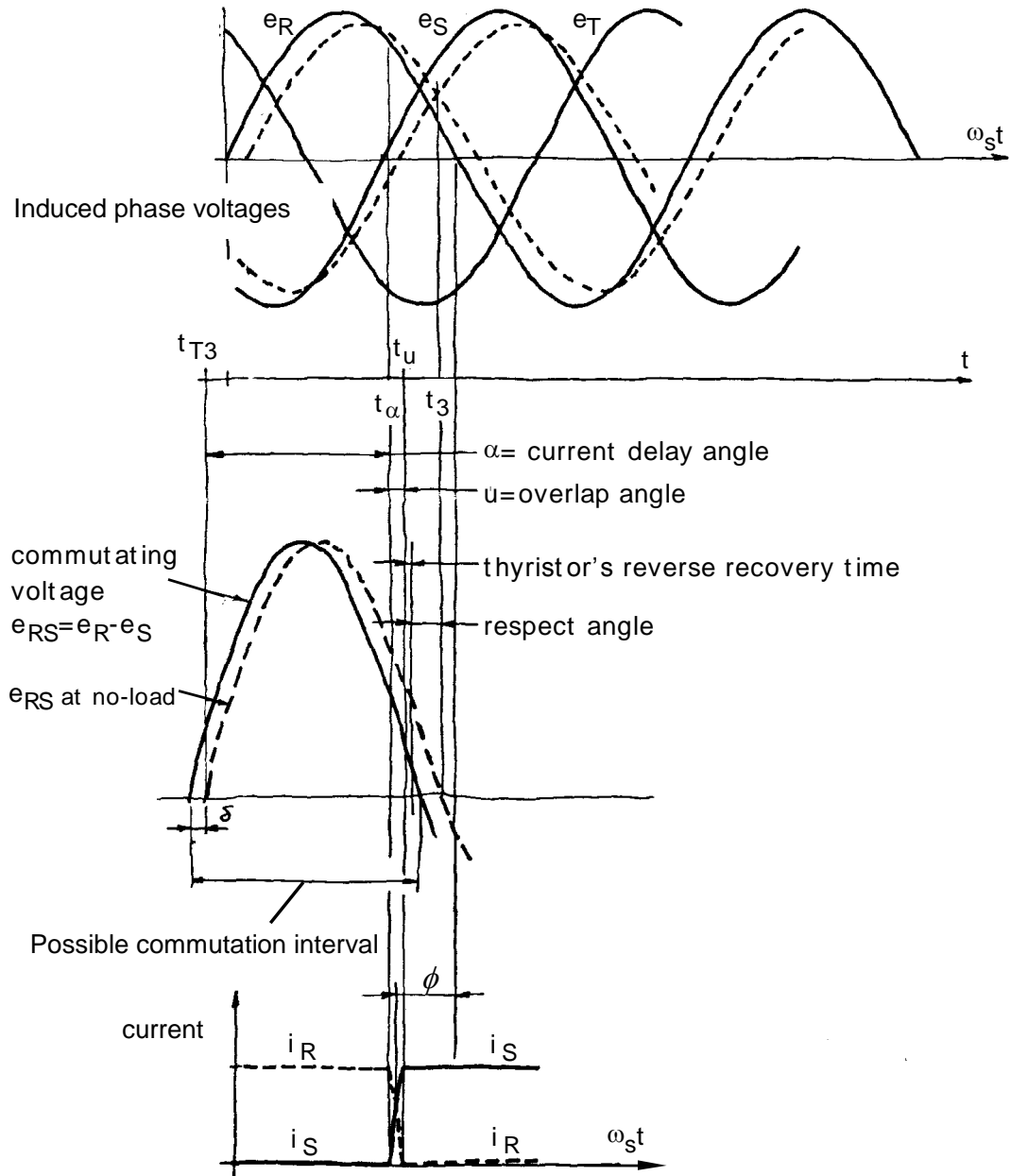


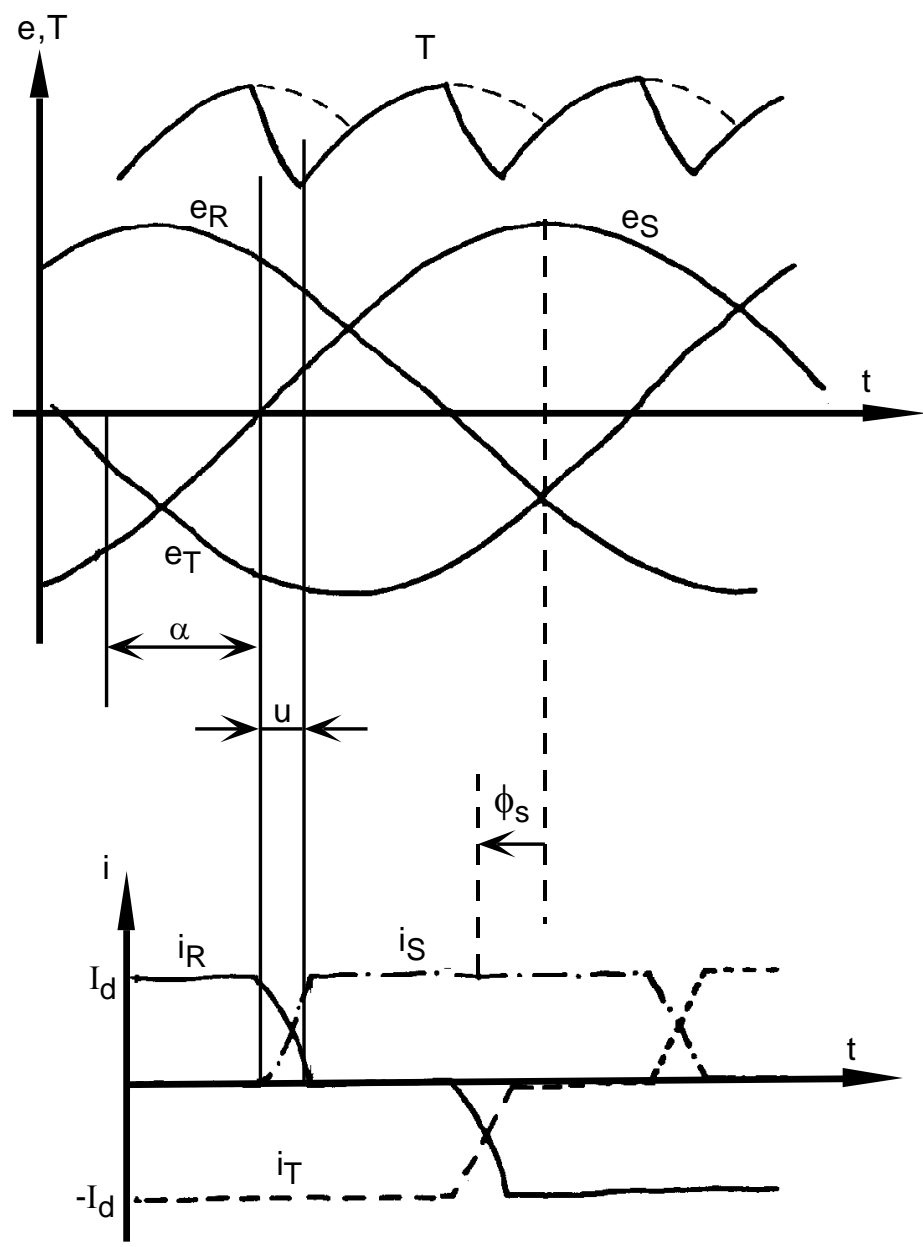
# Voltages and torques under ideal conditions



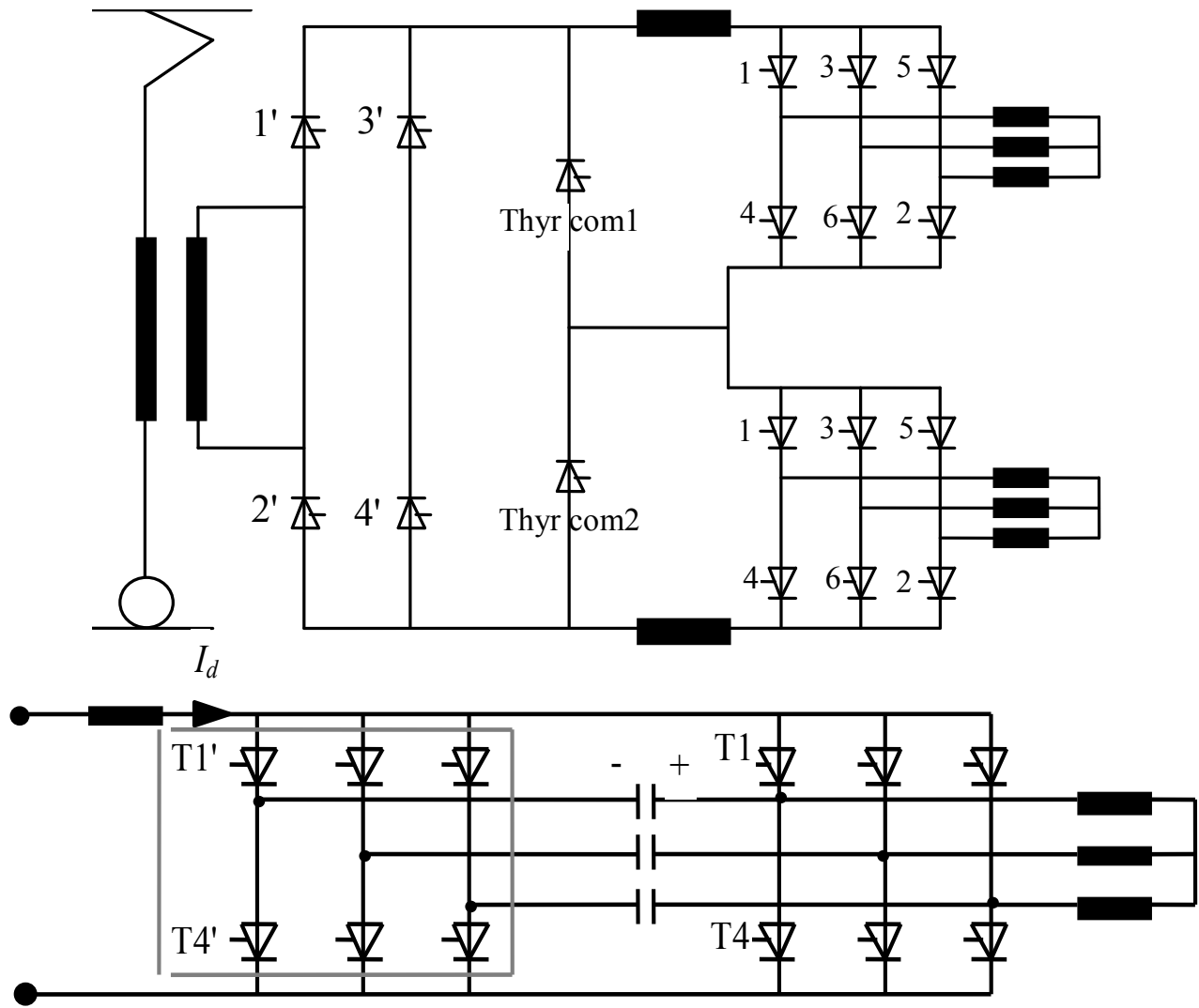
# Commutation from thyristor T1 to thyristor T3



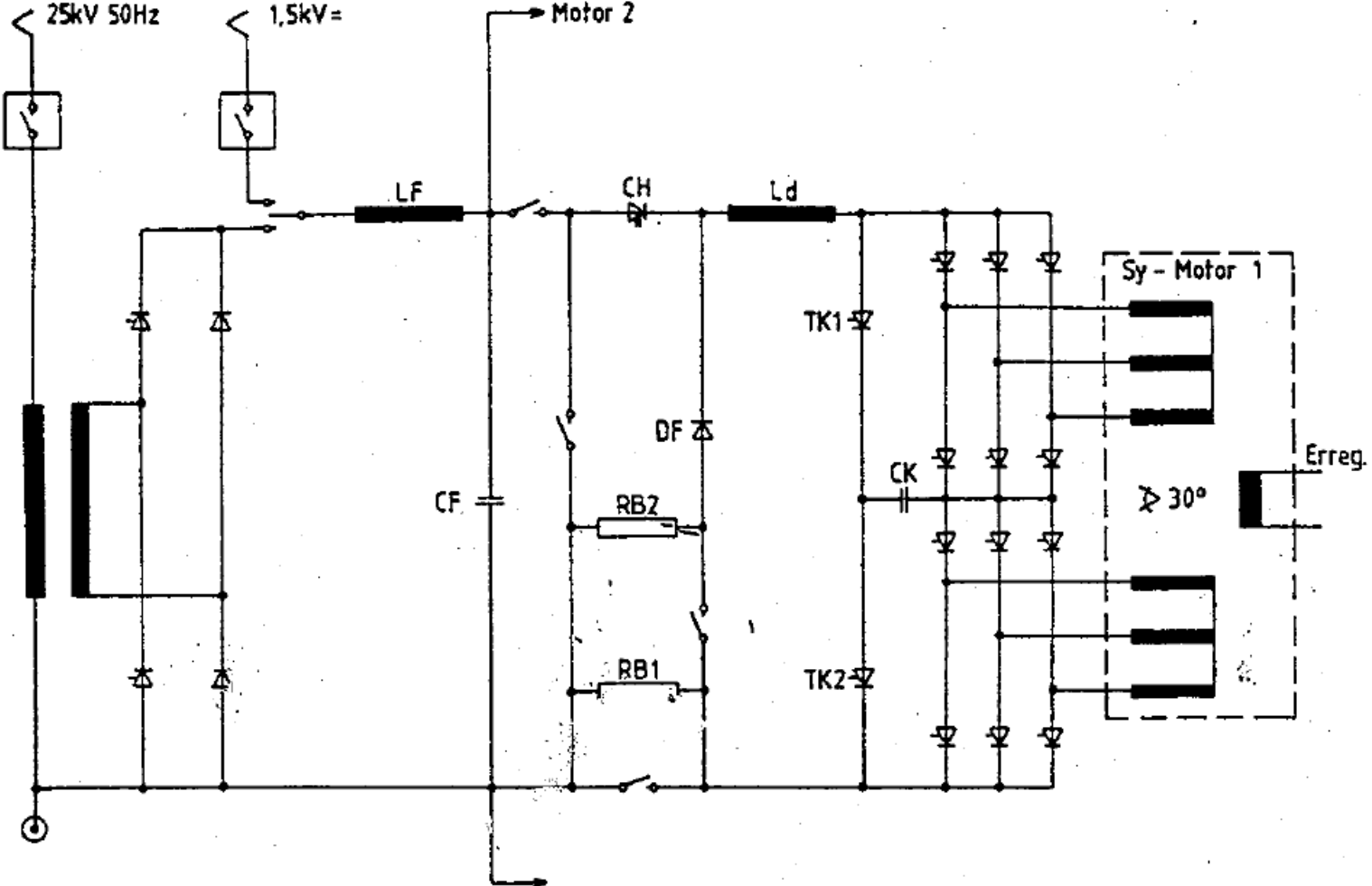




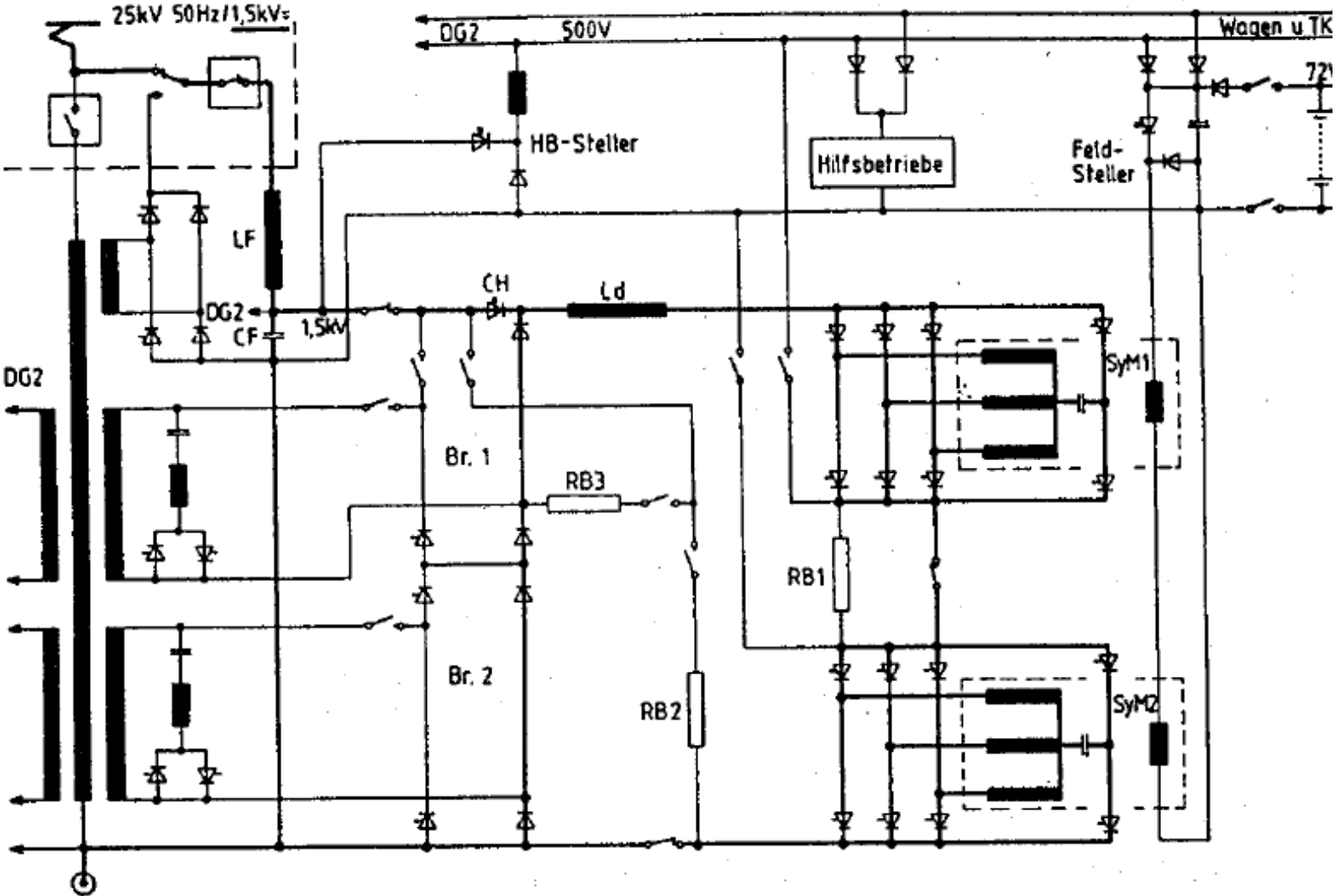
# DC link pulsation and forced commutation



# Example synchronous motor drive (France)



# Synchronous motor drive at 1.5 kV DC



# Synchronous motor drive at 25 kV, 50 Hz AC

